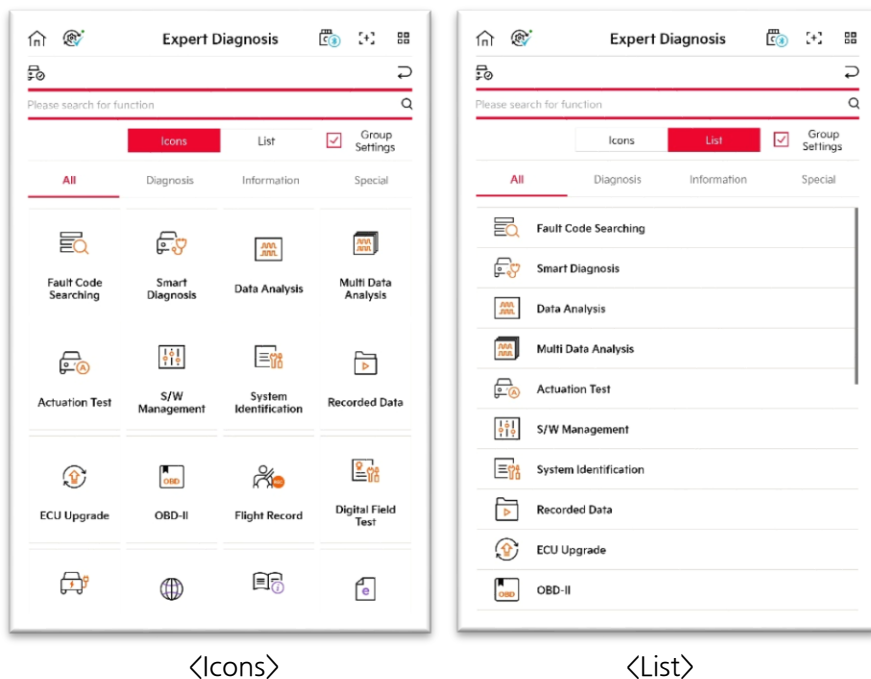


Expert Diagnosis

In Expert's Diagnosis, the user can use diagnosis function, special function and utility function provided by KDS 2.0.


Screen Introduction

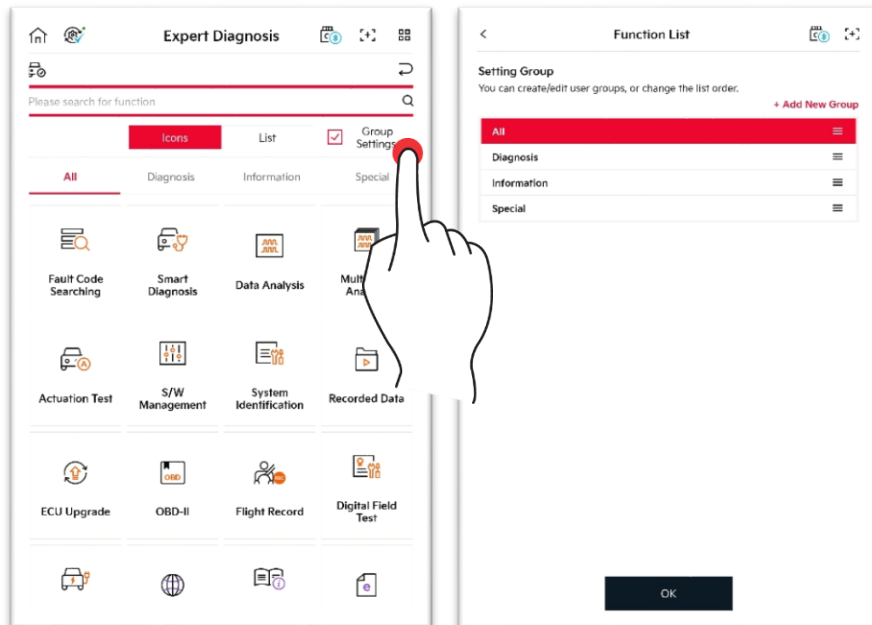
Functions provided by KDS 2.0 are offered as icons or list, and it provides list of function for each category.



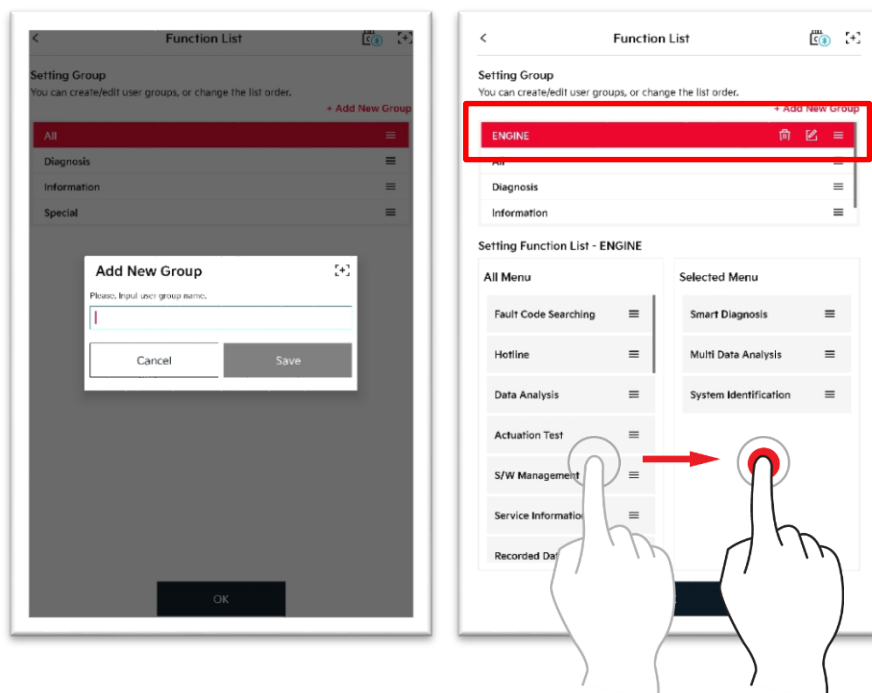
User Group Creation/Edit

This function edits Menu screen to suit with the user convenience.

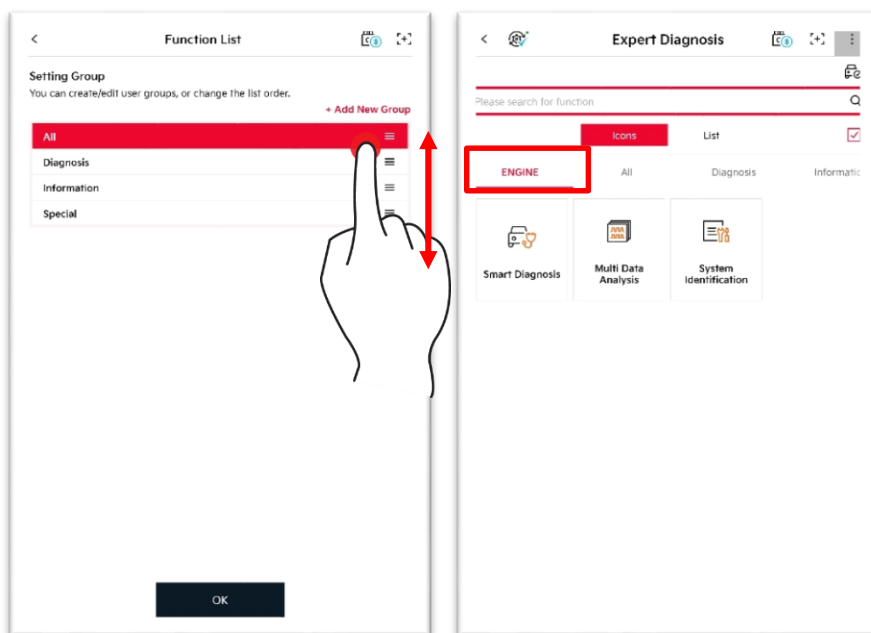
1. Touch  button, and touch 'Add New Group' button.






2. If you enter a group name and touch Save button, a new group is added. You can drag a desired menu to apply it to a group.



3. You can edit the order by dragging  icon. If you touch OK button, you can check the created group.



		You can delete a created group.
		You can edit a group name.