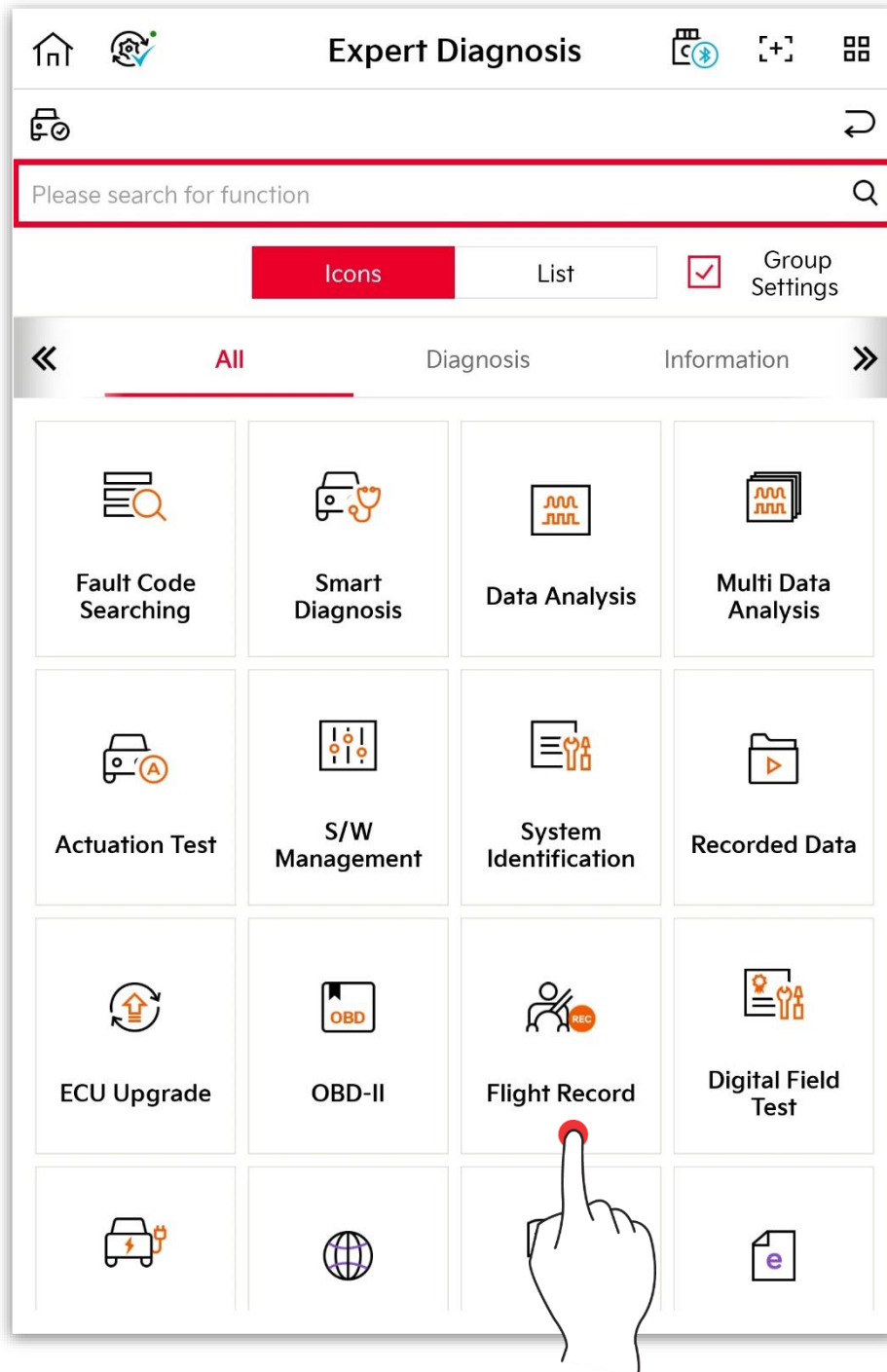


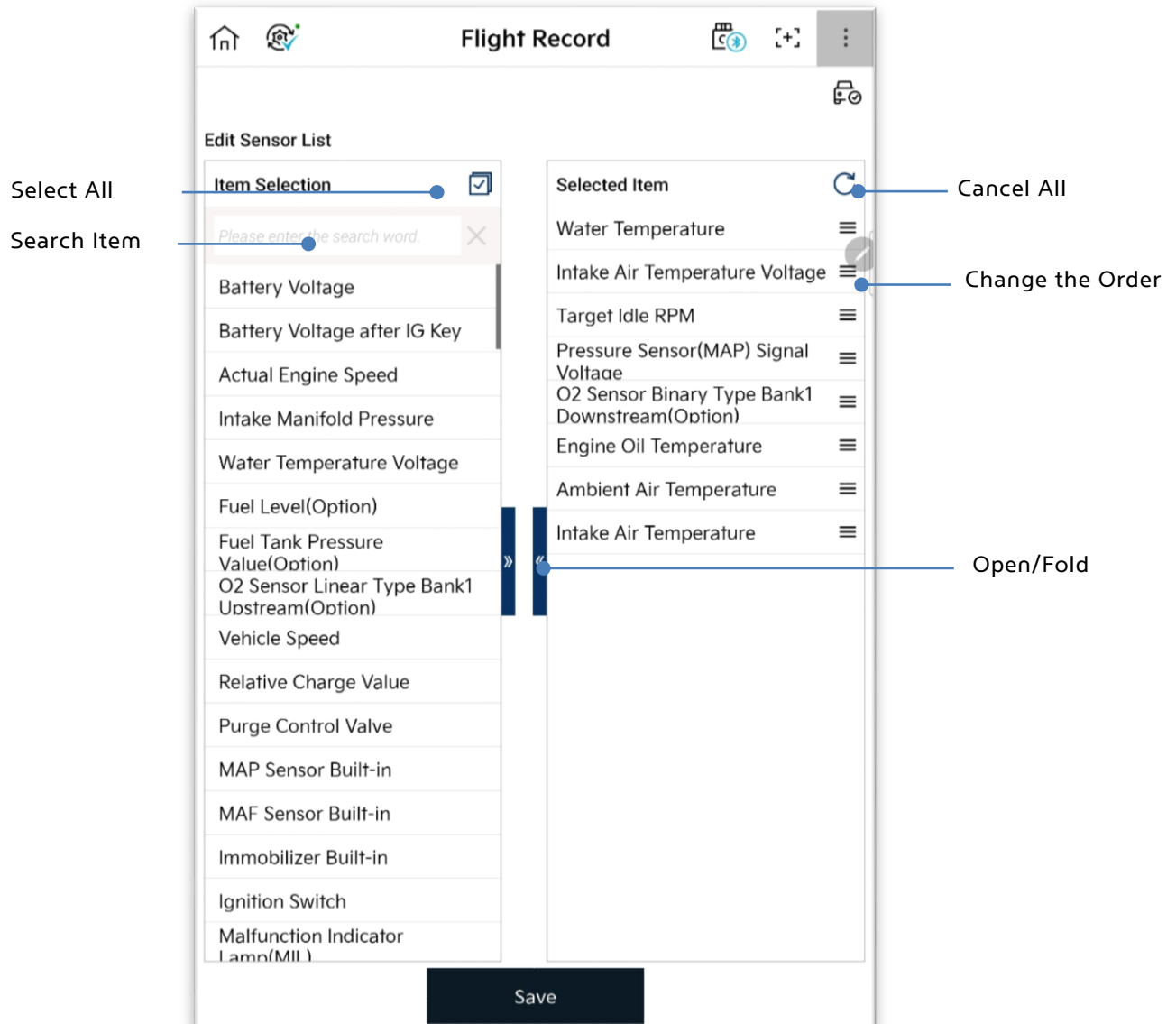
## Expert Diagnosis– Driving Data Record

This is the function to record the data output while driving vehicles.



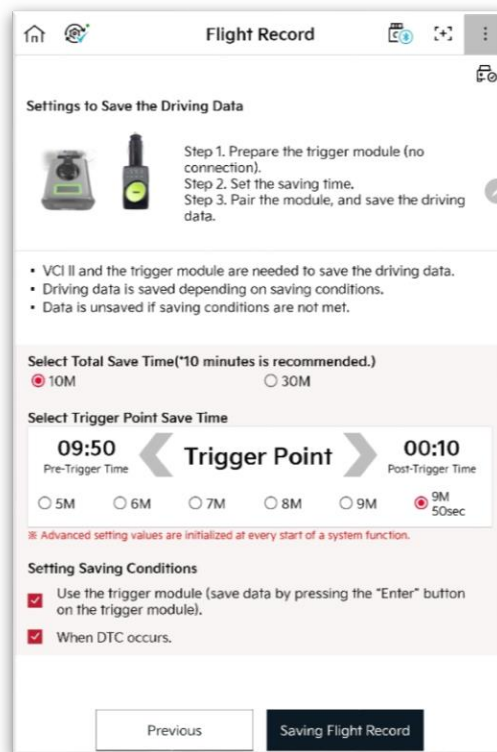
## Item Selection

Please select the item of the system sensor which you want to record.



## Setting for Driving Data Record

Please set the condition for driving data record.



Tip

### Conditions for Pairing VCI II and Trigger Module

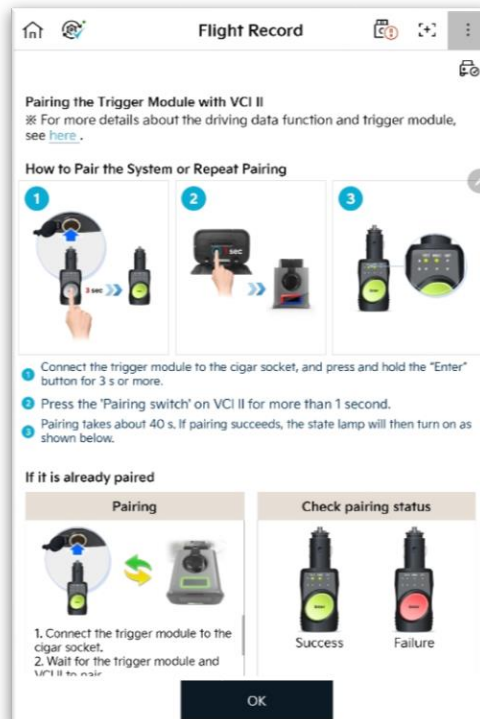
- Pairing between VCI II module and tablet
- Not connecting trigger module to cigar power

### Setting Record Time Before/After Trigger

- Ex) If you set 10 seconds before/after Trigger, it records 10 seconds before/after occurrence of fault code or before/after pressing the 'Enter' button of trigger module.

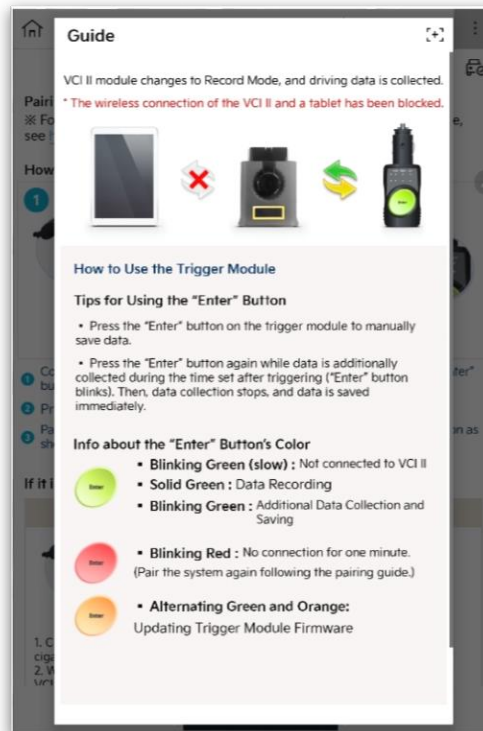
## Pairing between Trigger Module ↔ VCI II

Please refer to the picture below to proceed the pairing.



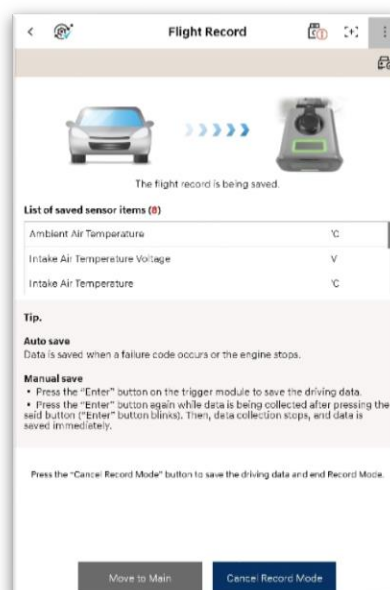
**Tip**

Please refer to the picture below for the information of colors and how to use the trigger module.



## Driving Data Record

When the green light comes on the 'Enter' button of trigger module, it means the setting for Driving Data Record is complete. Please check the information how to use the trigger module before you drive your vehicle.



## Deactivate Record Mode

You can deactivate Record Mode of VCI II and analyze the recorded driving data after you copy it to the tablet.

