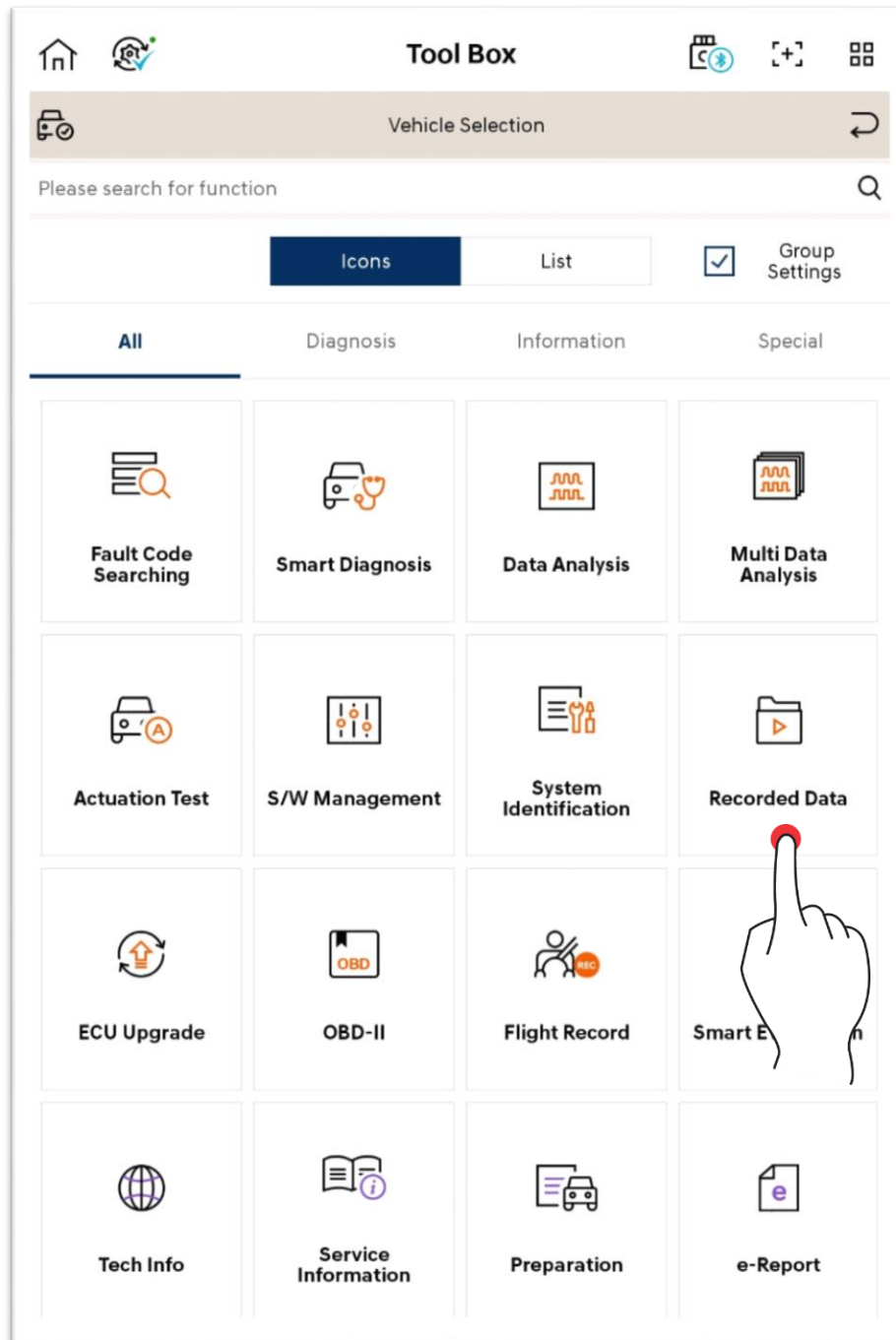


## Tool Box – Recorded Data

You can view the data saved in tablet PC, and also copy the driving data saved in VCI II.



## Basic Operation

The user can view, share or delete the data saved in tablet PC based on the user's need.

The screenshot displays the 'Recorded Data' application interface. At the top, there is a navigation bar with a back arrow, the title 'Recorded Data', and icons for a folder and a plus sign. Below the navigation bar, there are two tabs: 'Local' and 'Data Copy'. A breadcrumb path is shown: 'NvciData > Record > HYUNDAI > ELANTRA(AD) > 12345789012345678'. Below the breadcrumb, there is a 'Recorded Data List' section. To the left of this list is a 'Spread/fol' icon (a folder with a plus sign), and to the right is a 'Share/delete' icon (a checkmark in a box). The list itself has two columns: 'Record' and 'File Name'. The 'Record' column contains a tree view with expandable items: 'Record', 'HYUNDAI', 'ELANTRA(AD)', and '12345789012345678'. The 'File Name' column lists the corresponding files: 'ELANTRA(AD)\_ENGINE\_20211117-143116.GSR', 'ELANTRA(AD)\_ENGINE\_20211117-143123.GSR', 'Image\_20211117\_143644.png', 'Image\_20211117\_143649.png', 'Image\_20211117\_143655.png', 'Image\_20211117\_143703.png', 'Image\_20211117\_143708.png', and 'Image\_20211117\_143711.png'. At the bottom of the interface, there is an 'Open' button. A blue line points from the 'Open' button to the text 'Open a saved data'.

Spread/fol

Recorded Data List

Share/delete

Record	File Name
Record	
HYUNDAI	ELANTRA(AD)_ENGINE_20211117-143116.GSR
ELANTRA(AD)	ELANTRA(AD)_ENGINE_20211117-143123.GSR
12345789012345678	Image_20211117_143644.png
	Image_20211117_143649.png
	Image_20211117_143655.png
	Image_20211117_143703.png
	Image_20211117_143708.png
	Image_20211117_143711.png

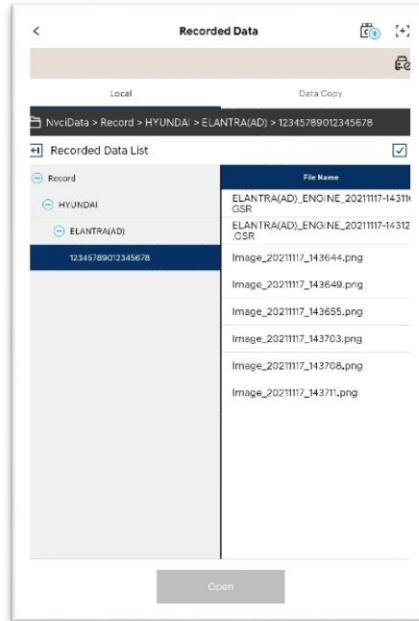
Open

Open a saved data

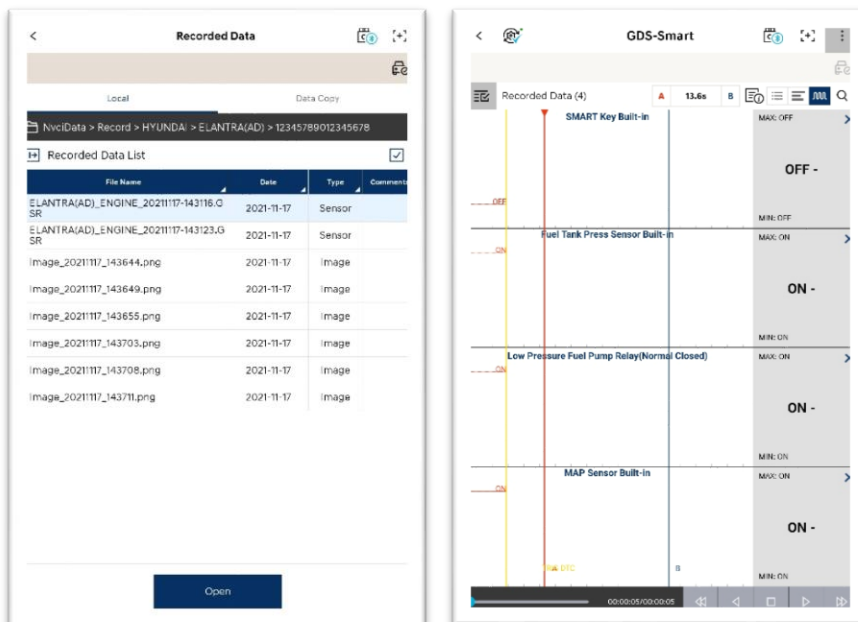
## Open Files

### Saved Data File (.GSR)

You can check the data in Text Mode and Graph Mode.



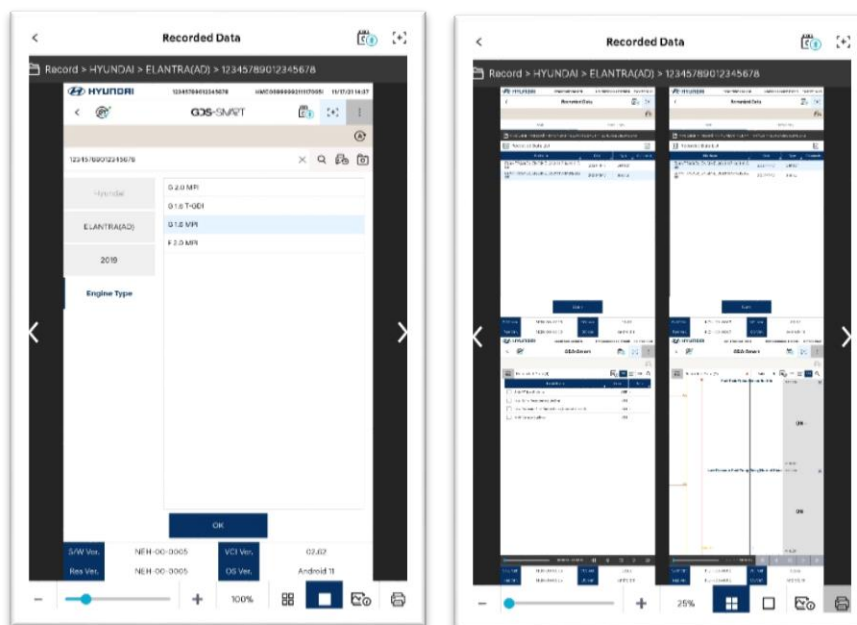
<Text Mode>



<Graph Mode>

## Image Files

You can check the image files that are saved.

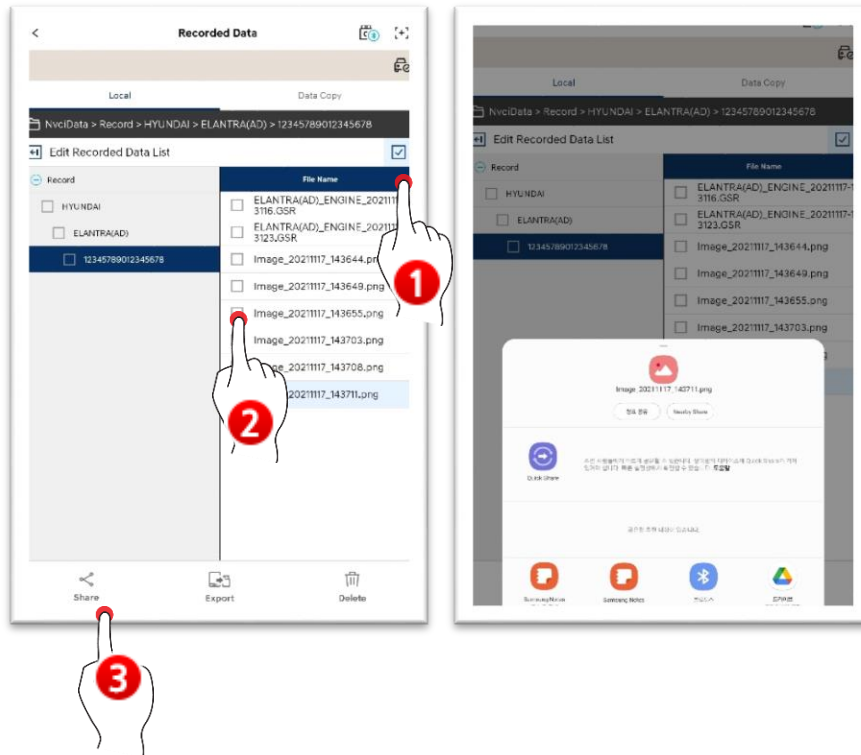


	Maximize/minimize
	View one image page
	View multiple image pages (maximum of 4 pages)
	Detailed information of images
	Print

## Sharing, Export and Delete

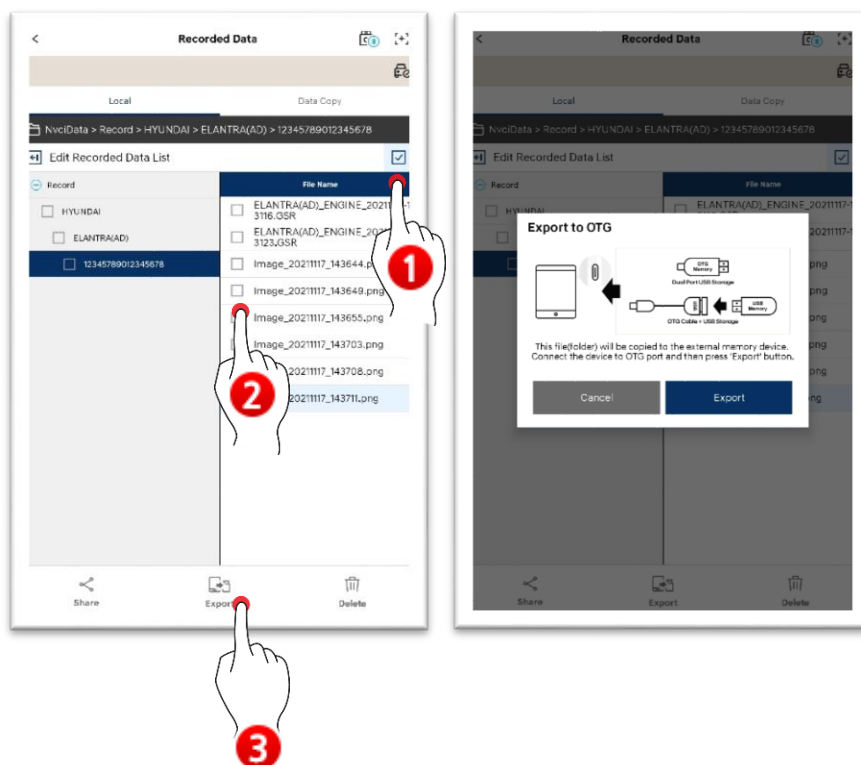
### Sharing

You can share the data by using various methods supported by your tablet.



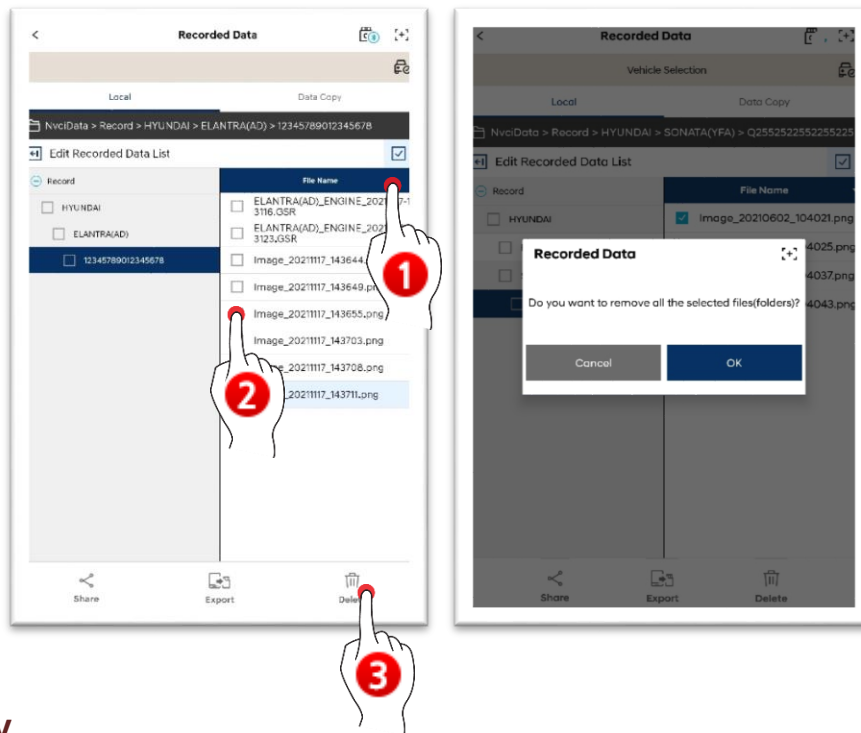
### Export

You can export the data through an external saving device.



### Delete

You can delete the data via Delete button.



## Data Copy

You can copy and paste the data files saved in VCI to your tablet PC.

Select a data to copy, and touch 'Data Copy' button.

※ It is saved in the file path of NvcData/Record of internal storage device.

