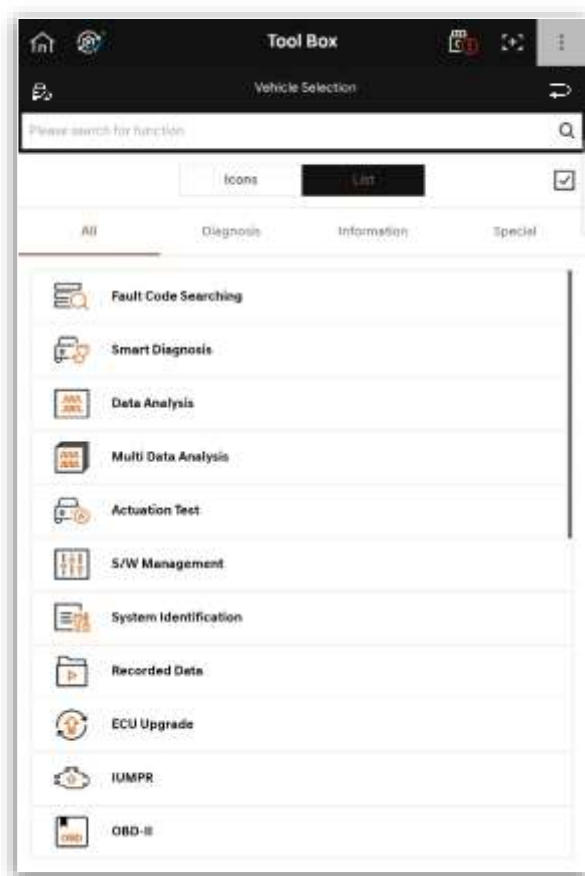
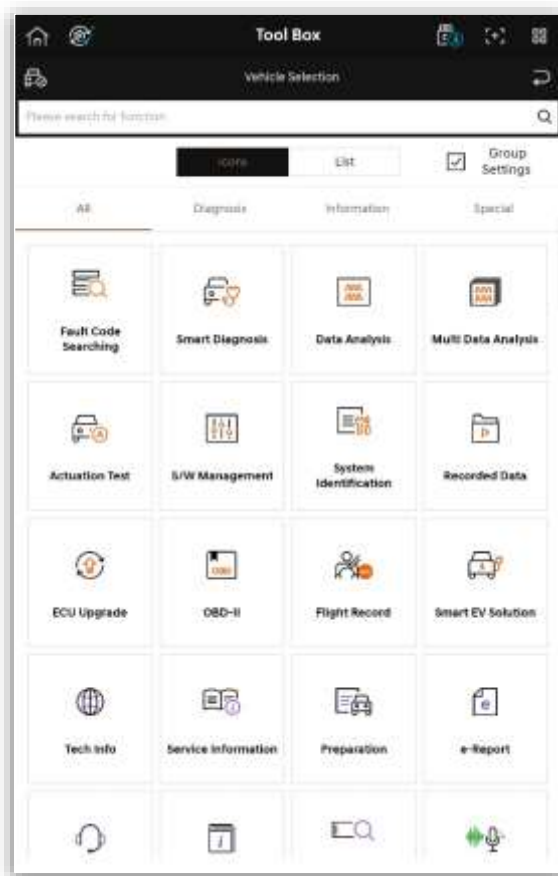


Tool Box

In Expert's Diagnosis, the user can use diagnosis function, special function and utility function provided by Genesis-Smart.

Screen Introduction

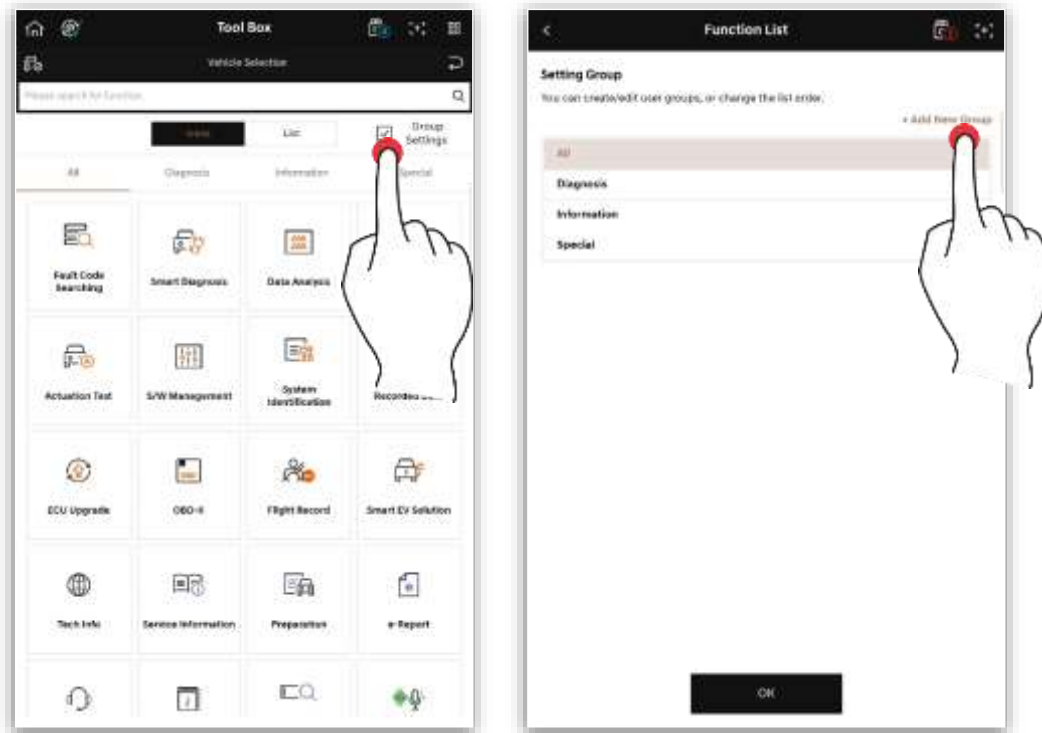
Functions provided by Genesis-Smart are offered as icons or list, and it provides list of function for each category.



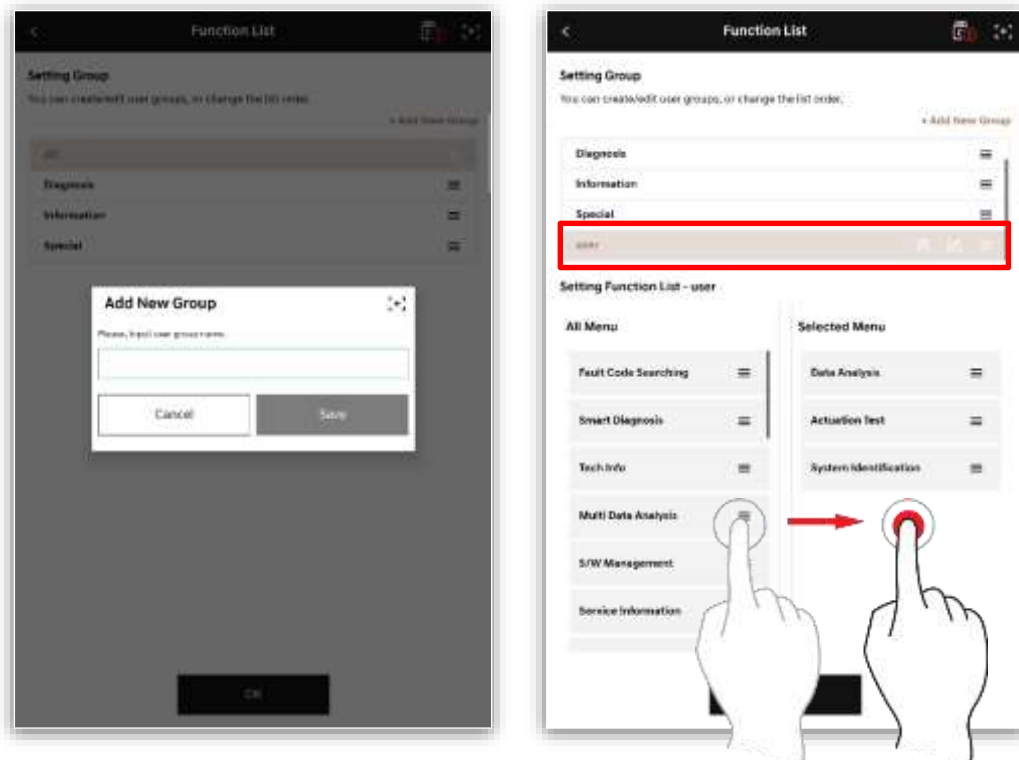
User Group Creation/Edit

This function edits Menu screen to suit with the user convenience.

1. Touch  button, and touch 'Add New Group' button.

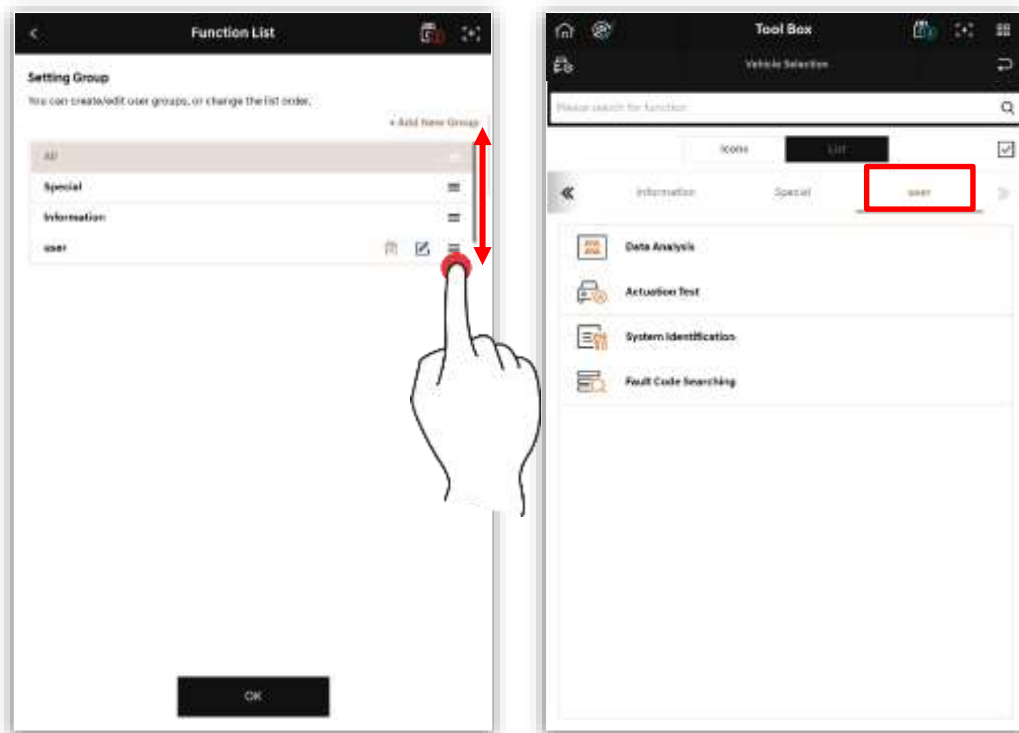






2. If you enter a group name and touch Save button, a new group is added. You can drag a desired menu to apply it to a group.



3. You can edit the order by dragging  icon.

If you touch OK button, you can check the created group.



		You can delete a created group
		You can edit a group name
		You can edit the order