


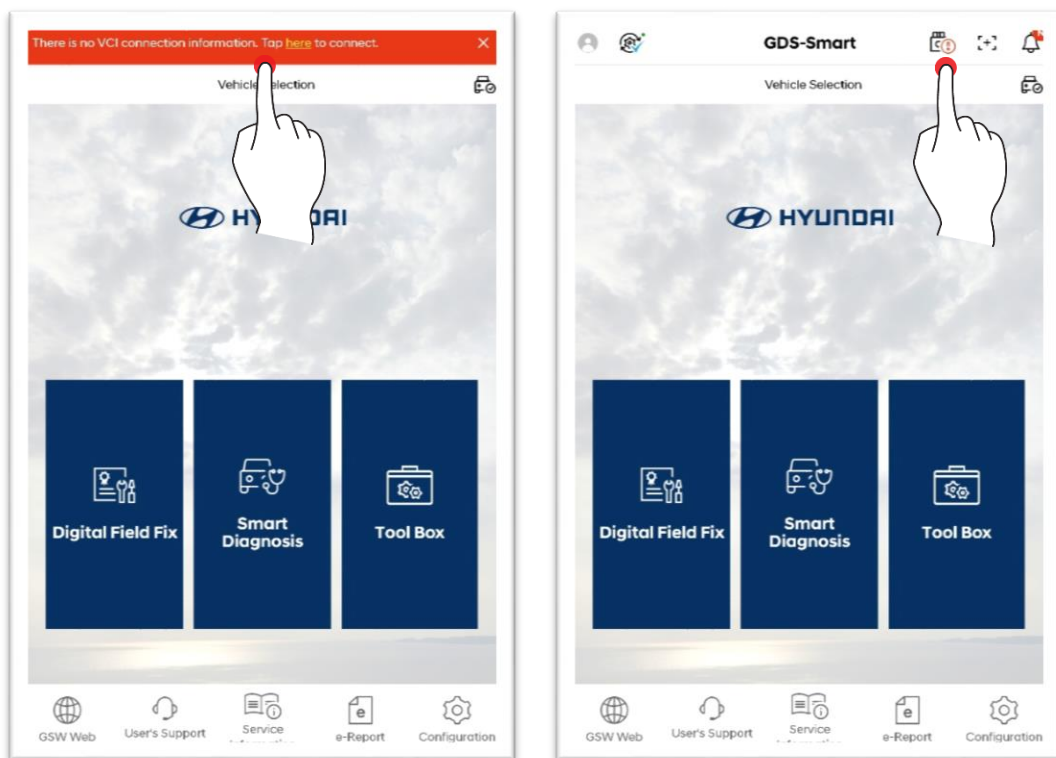
Module Connection

Entering Device Manager (common)

Entering via Top Menu

Through the icon at the bottom of GDS-Smart, you can enter the Device Manager function.

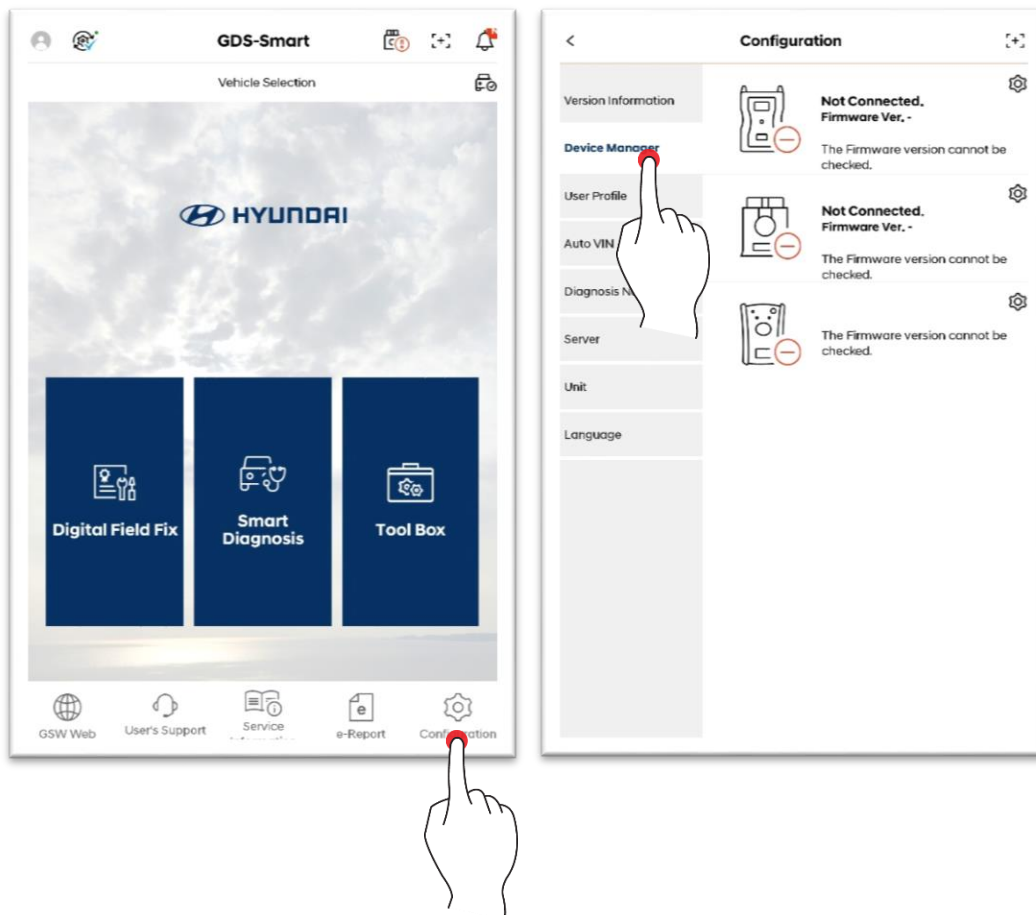
Touch 'Here' or  icon.



Entering via Bottom Menu

Through the Environment Setting at the bottom of GDS-Smart, you can enter the Device Manager function.

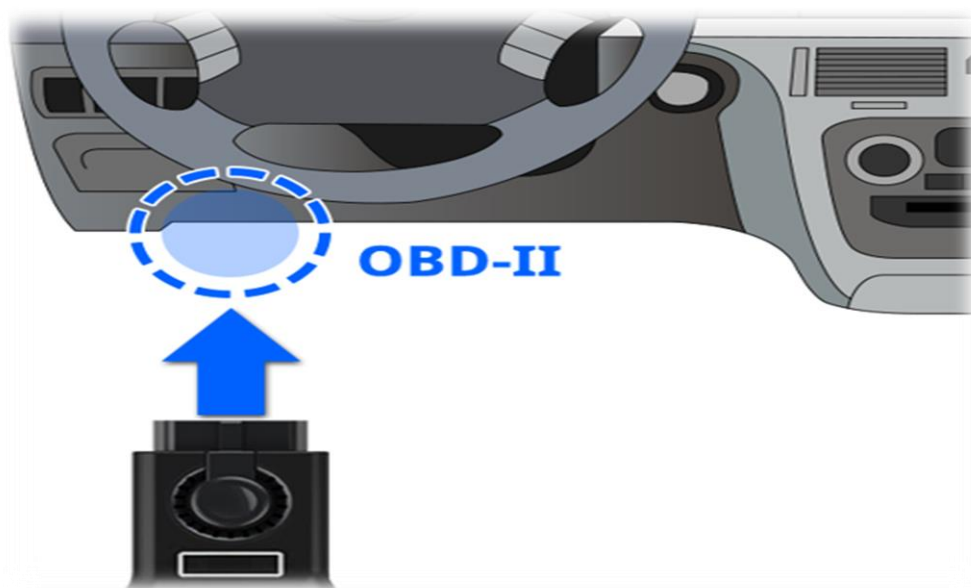
Please enter the Environment Setting/Device Manager function at the bottom of screen.



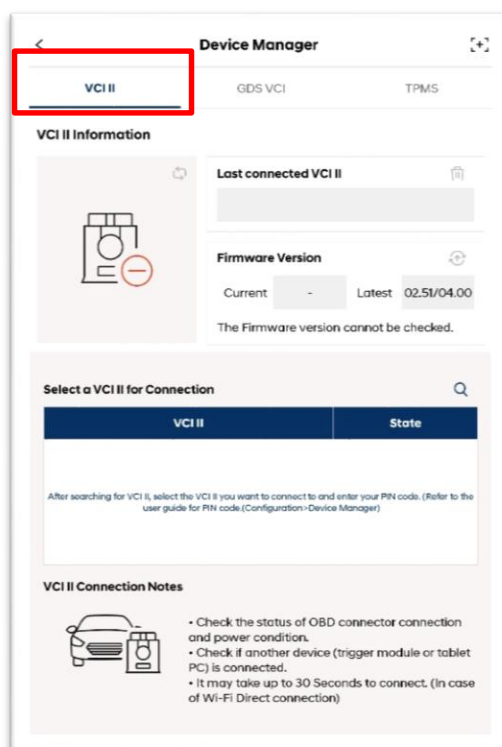
Connecting VCI II

Connecting via Wireless Communication (Wi-Fi direct, B/T)

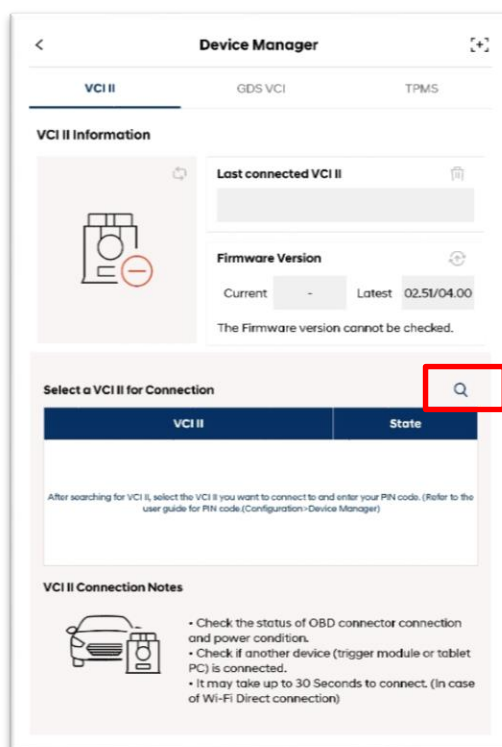
Connect VCI II Module to the vehicle's OBD-II Connector to support power, and proceed the following process:



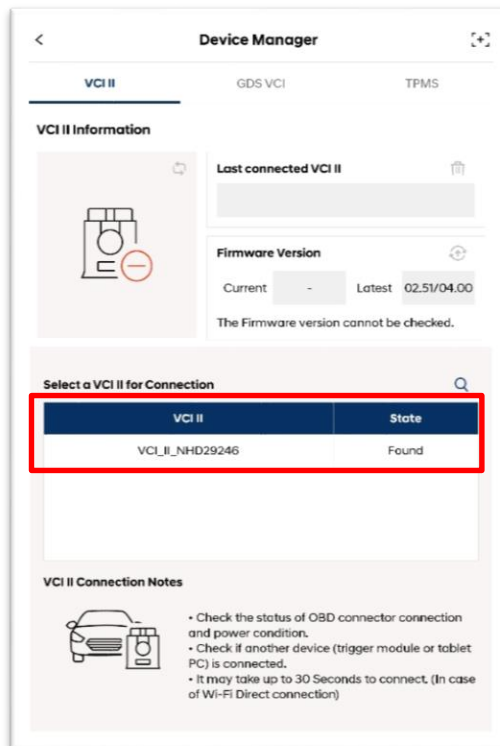
1. Touch VCI II tab of the Device Manager.



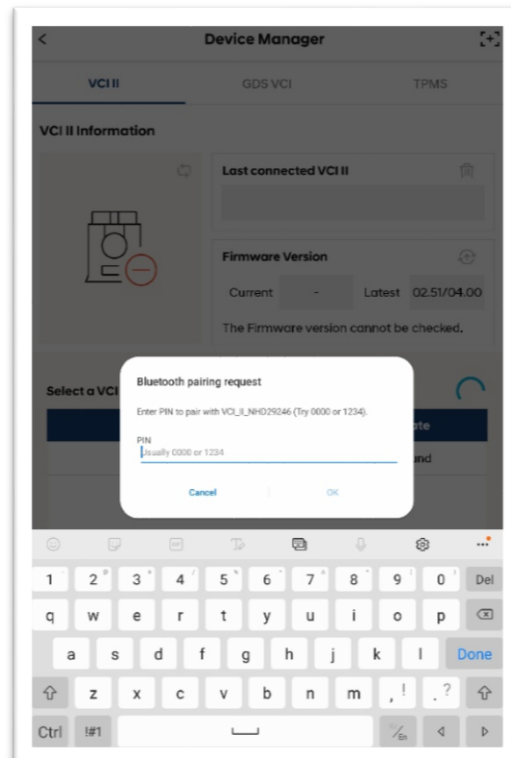
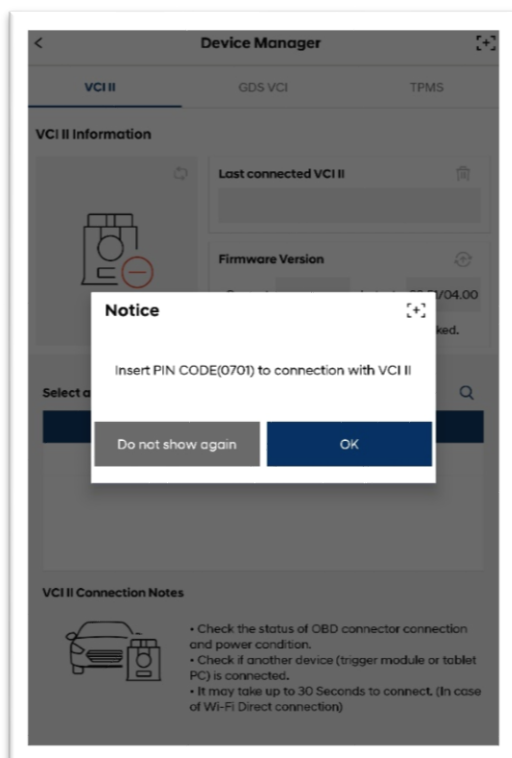
2. Search VCI II to connect through  icon.



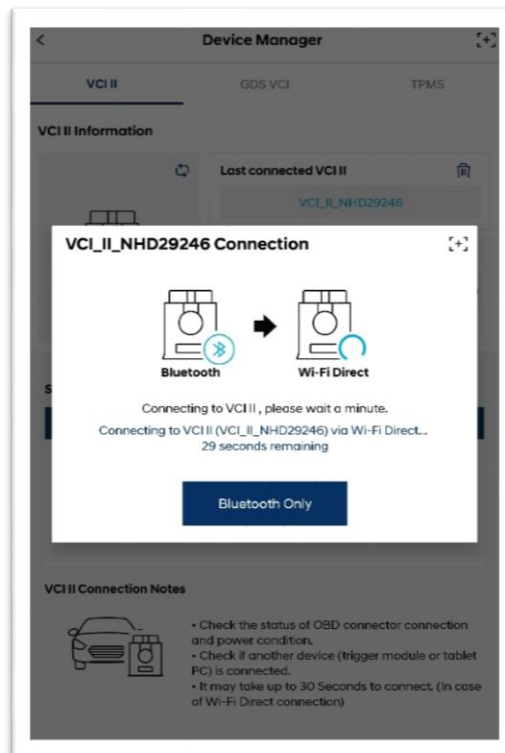
3. Check the serial number of VCI II to connect, and select it.



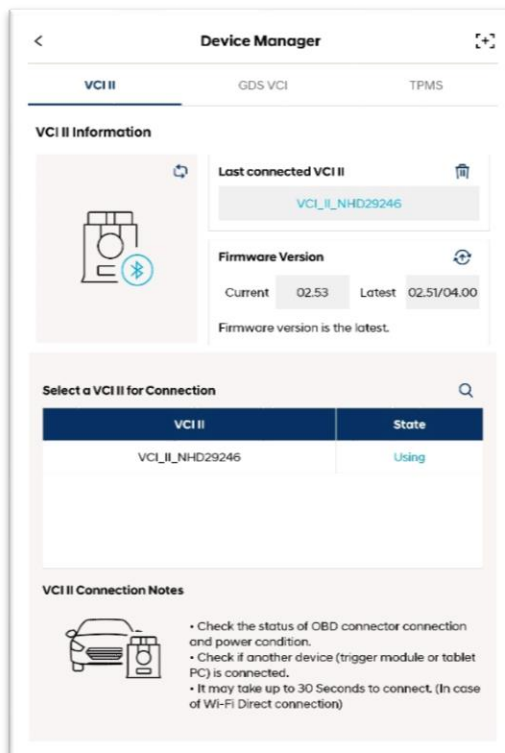
4. Check PIN CODE, and enter it.



5. VCI II connection is in progress.

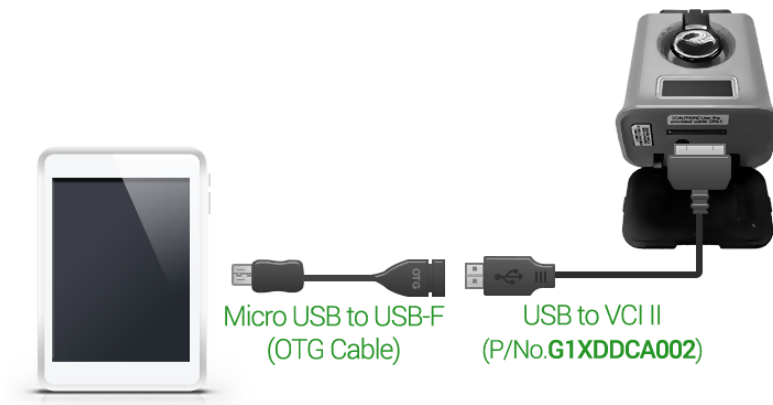


6. VCI II connection is completed.

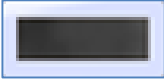






Connection via Wire Communication

VCI II can be connected via wire communication using a cable.
Connect the cable as shown in the figure below.



Tip on Status based on VCI II Lighting Color

	Not connected to tablet although VCI II's power is ON. (proceed connection through VCI II Connection Guide)
	VCI II and tablet is connected normally.
	VCI II and tablet are disconnected. (Connect VCI II to OBD-II Connector again, and reattempt connection with tablet.)
	VCI II is performing ECU upgrade.
	VCI II is in Driving Data Saving Mode.

Connecting GDS VCI

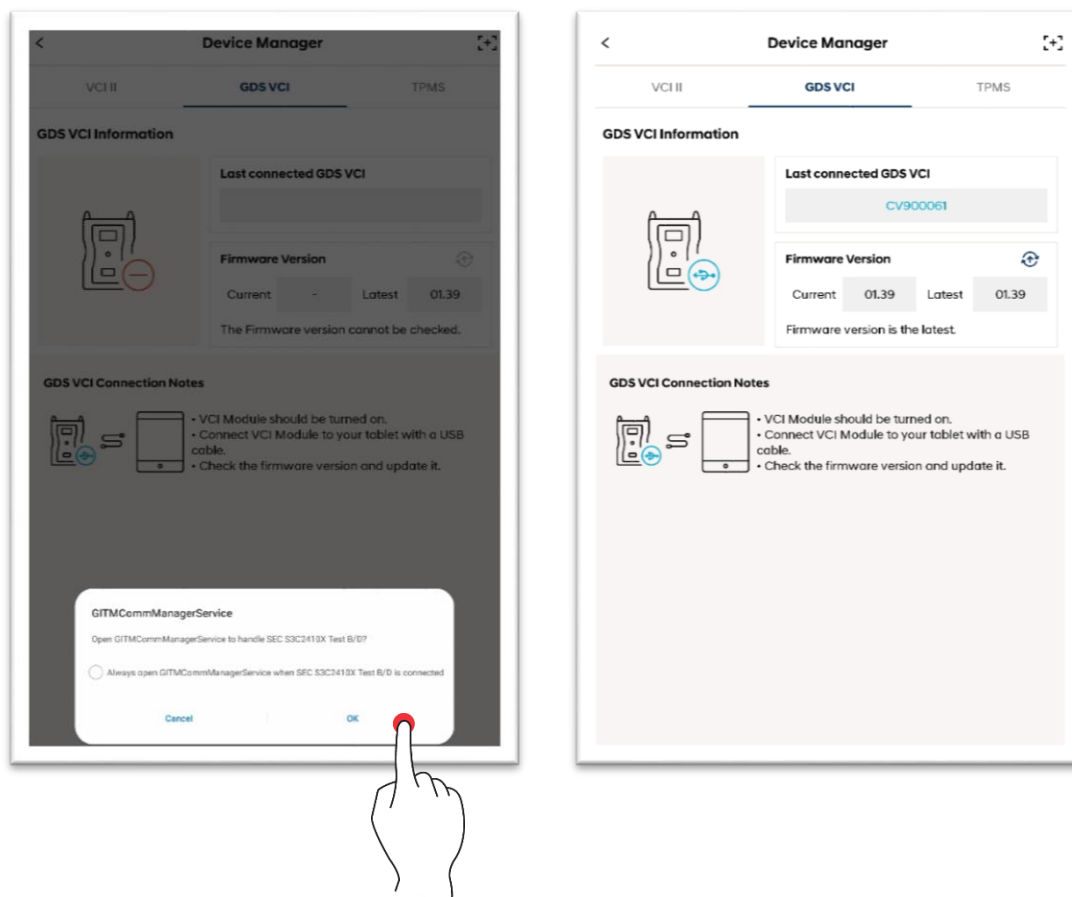
1. As shown in the figure below, proceed connection among vehicle ↔ GDS VCI ↔ tablet.



2. After connecting USB cable to tablet and support power, the pop-up is indicated as shown in the figure below.

If you touch 'OK' button, GDS VCI is connected.

The connection information can be confirmed in the Environment Setting/Device Manager.

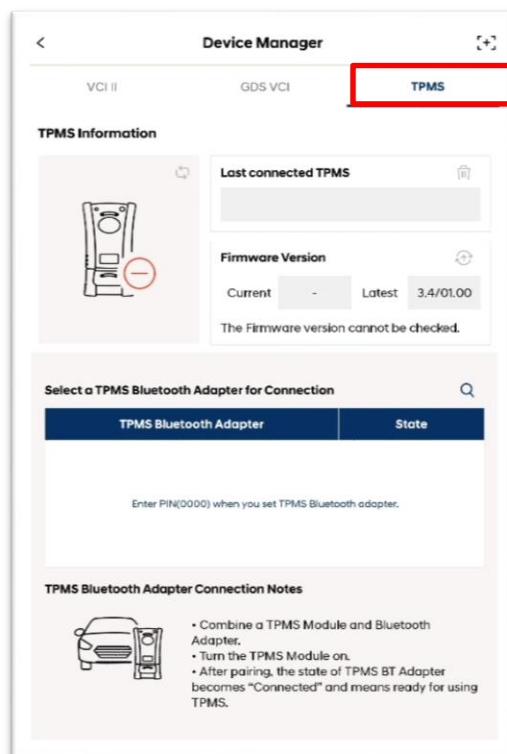


Connecting TPMS

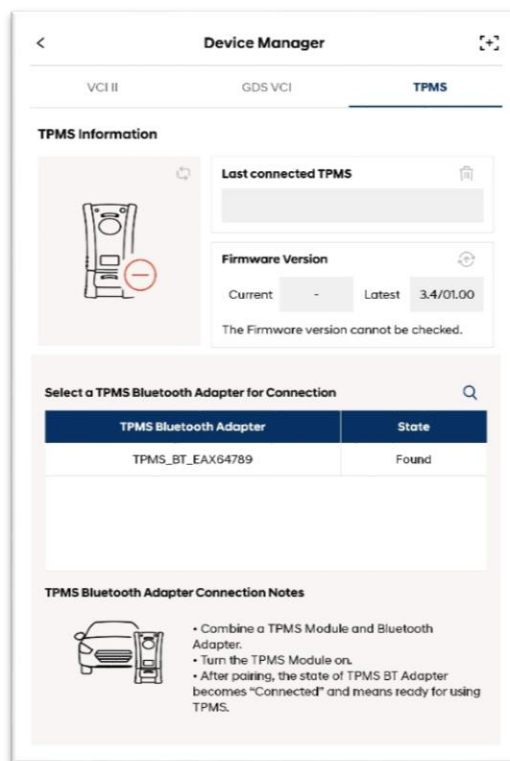
1. As shown in the figure below, connect TPMS Module and B/T Adapter and support power.



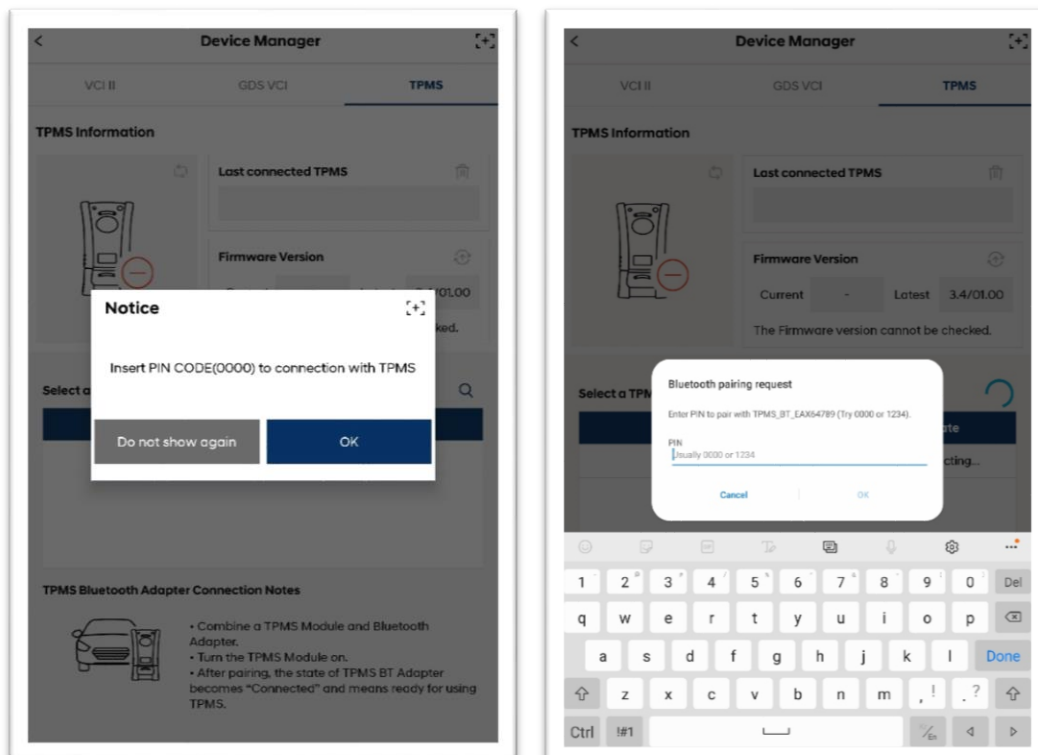
2. Choose a tab on the Device Manager.



3. Search TPMS to connect via  icon.



4. Check PIN CODE, and enter it.



5. TPMS connection is completed.

