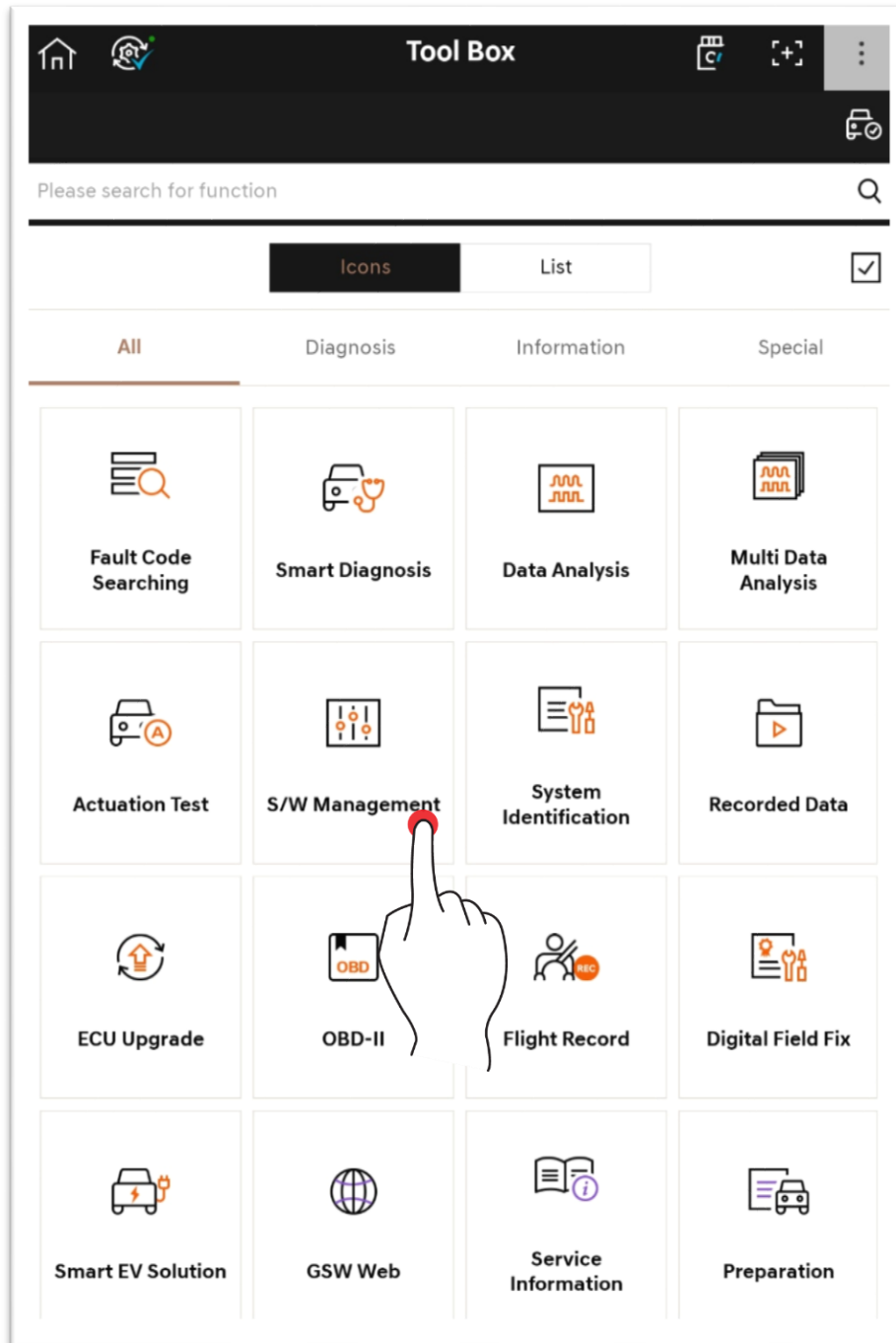


## Tool Box – S/W Management


This supports functions such as additional settings after vehicle repair, test or initialization, etc.

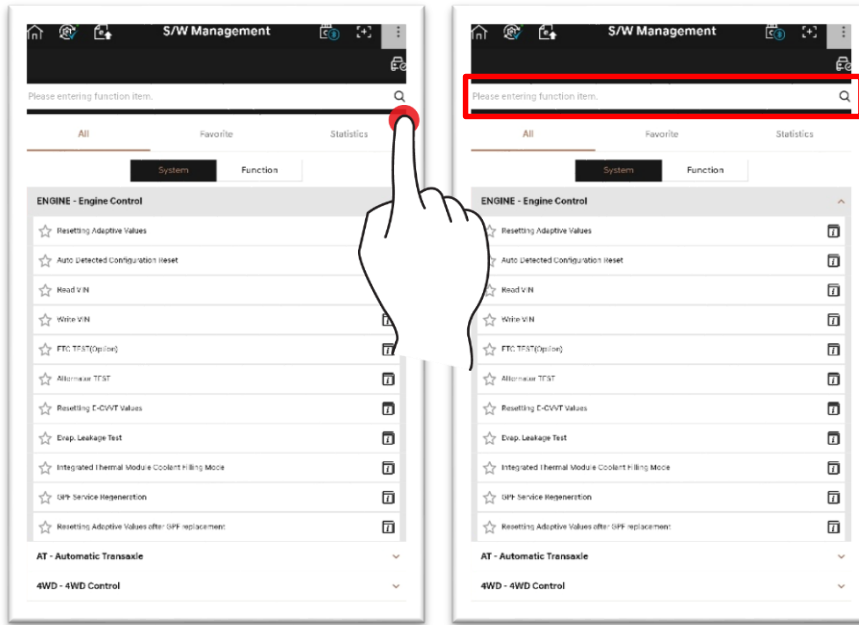
The supported items are varied depending on vehicle type, and caution should be paid for vehicle condition.



# Basic Operation

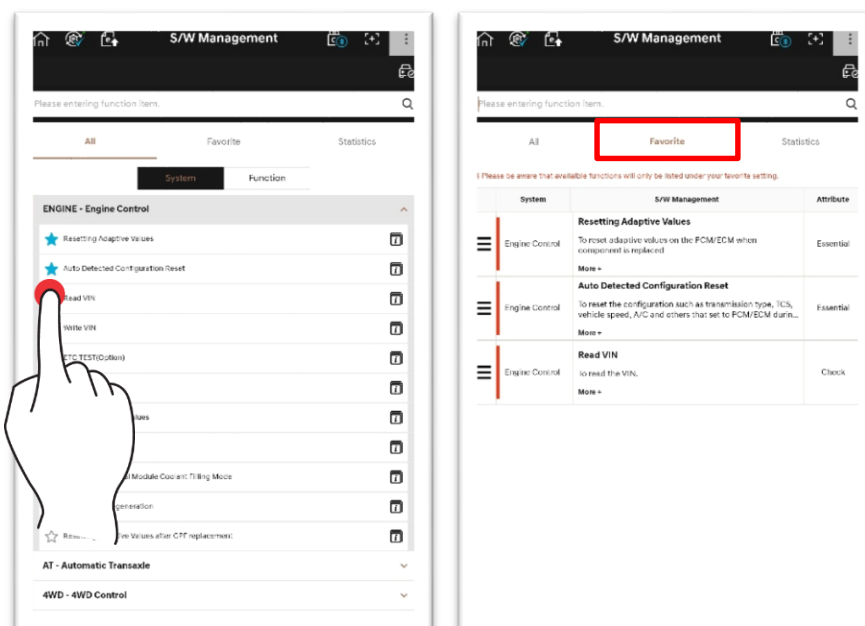
## Search

By touching , you can enter a search word to search a function.



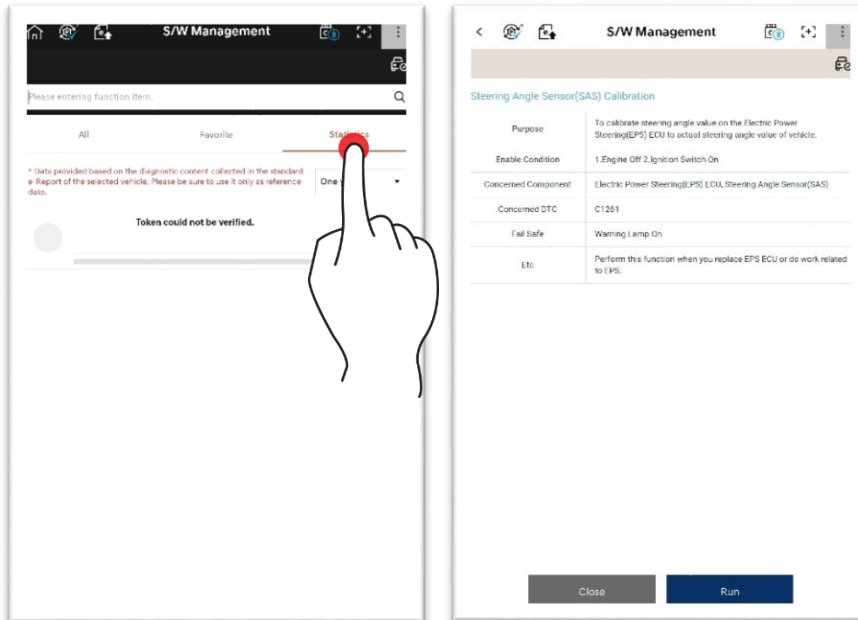
## Favorites List

By touching , you can configure frequently used functions to Favorites List.



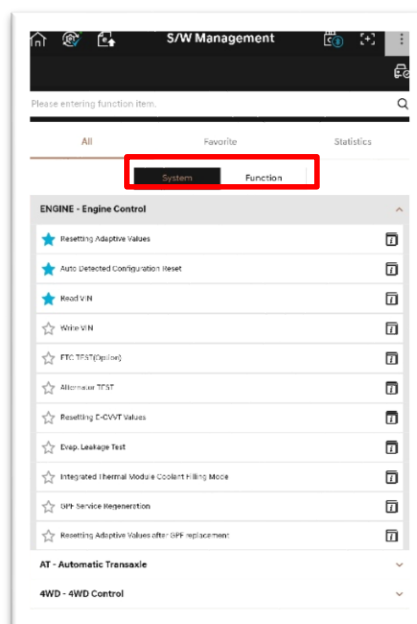
## Statistics

You can check number of performing the entire additional functions of the selected vehicle type, based on e-Report data.



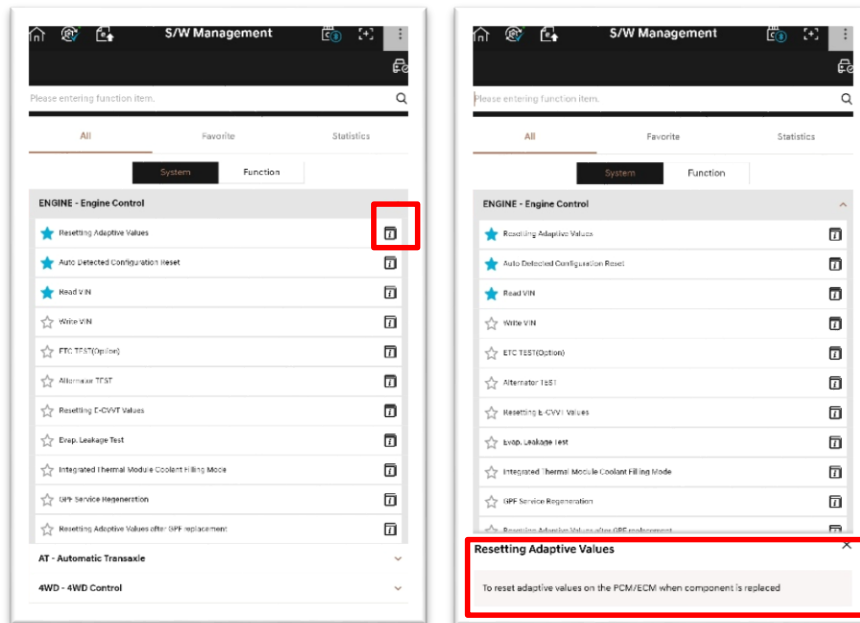
## Arrangement

You can change arrangement order of the functions list, and filter by item.



## Viewing the Guide

Through More+, you can receive a brief guide on the selected additional functions.



### ! Caution

- When operating additional functions with an improper method, there is a damage risk to the vehicle or relevant part.
- While a function is performing, make sure that other functions such as System button (Back/Home/Menu) and others are not operating.
- If vehicle status and condition are not conforming, the relevant additional functions may fail to operate.