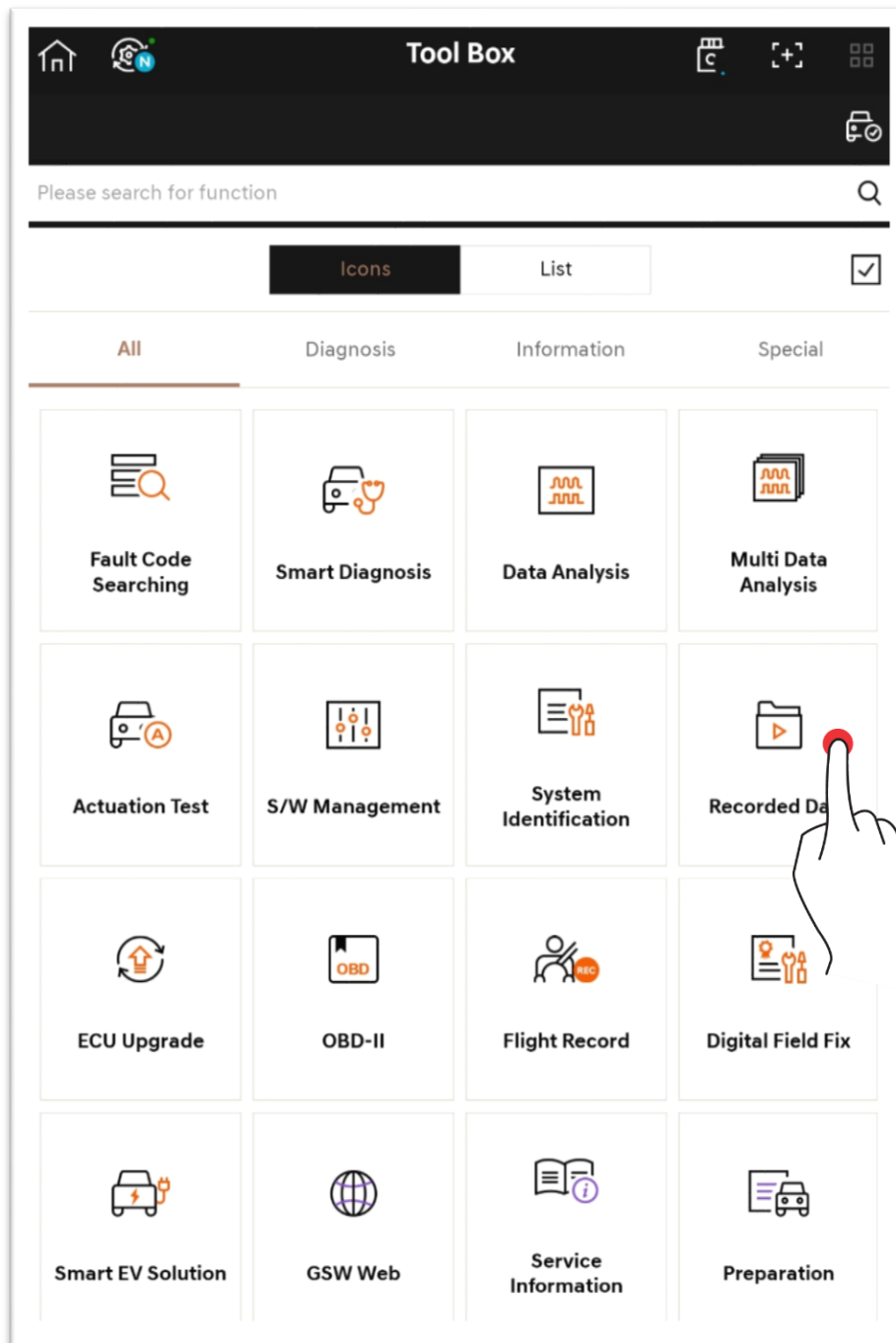


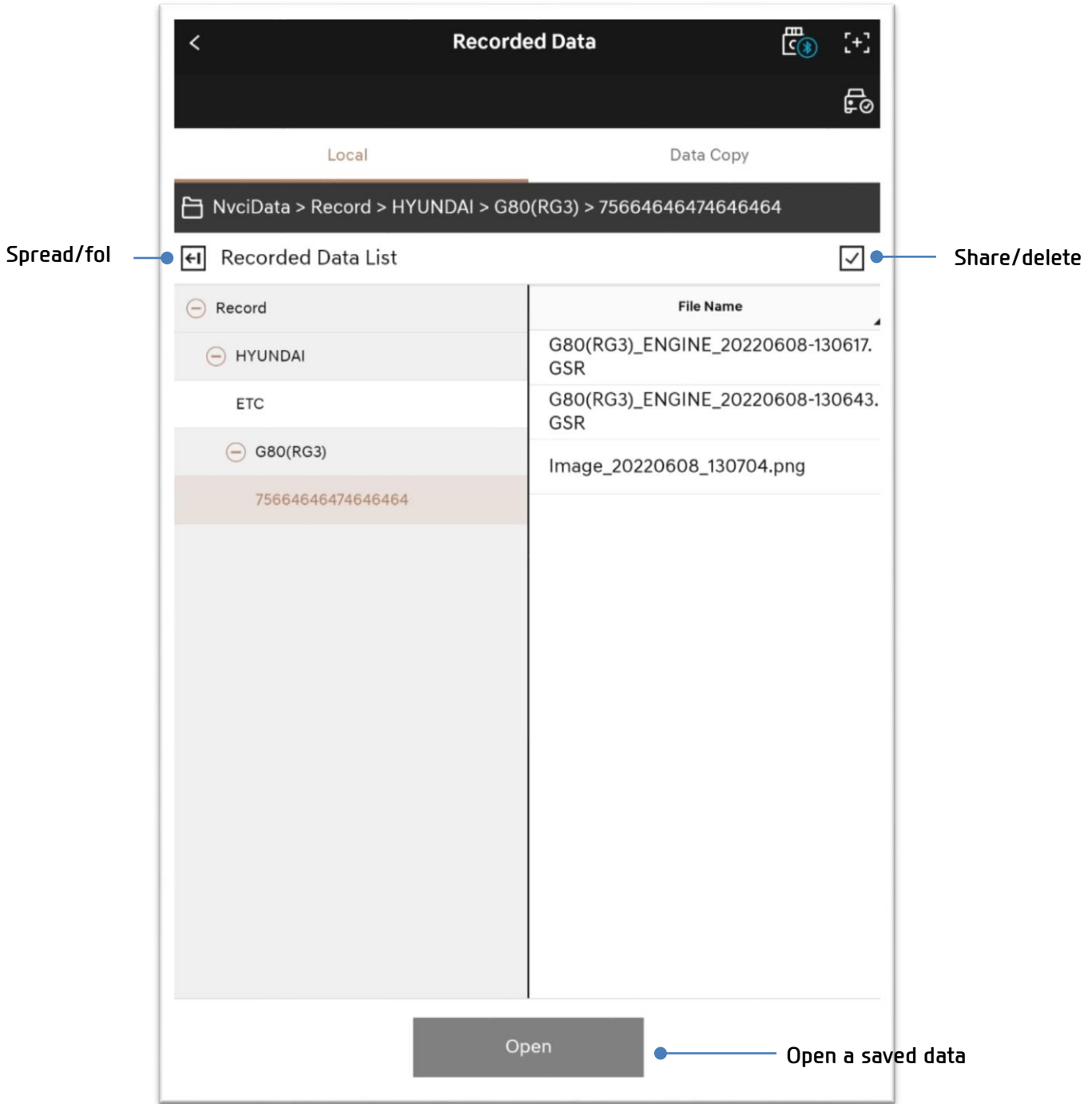
Tool Box – Recorded Data

You can view the data saved in tablet PC, and also copy the driving data saved in VCI II.



Basic Operation

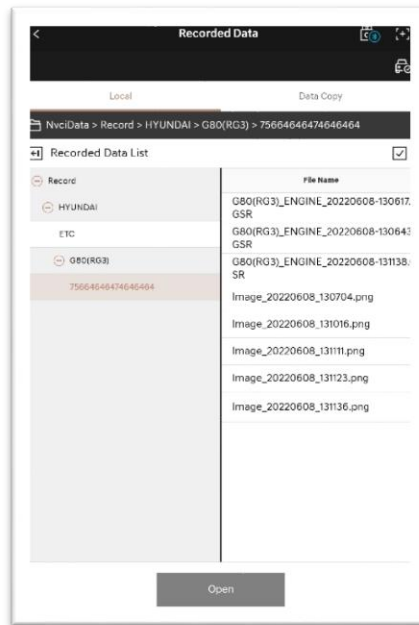
The user can view, share or delete the data saved in tablet PC based on the user's need.



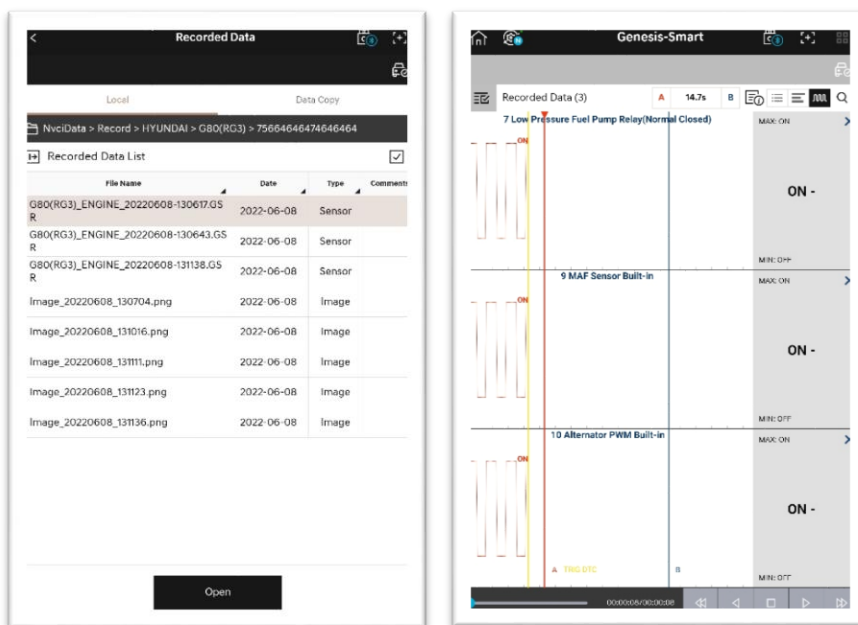
Open Files

Saved Data File (.GSR)

You can check the data in Text Mode and Graph Mode.



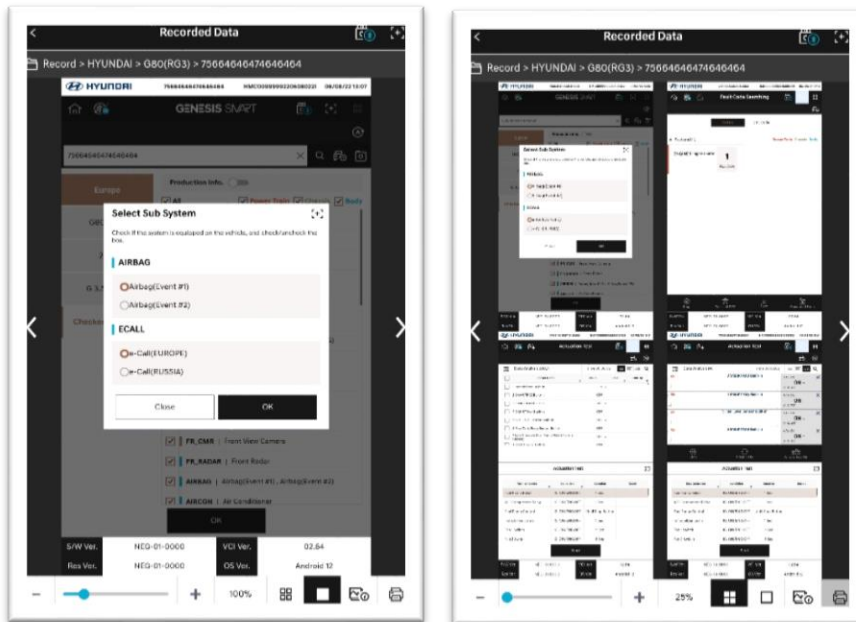
<Text Mode>




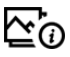



<Graph Mode>

Image Files

You can check the image files that are saved.

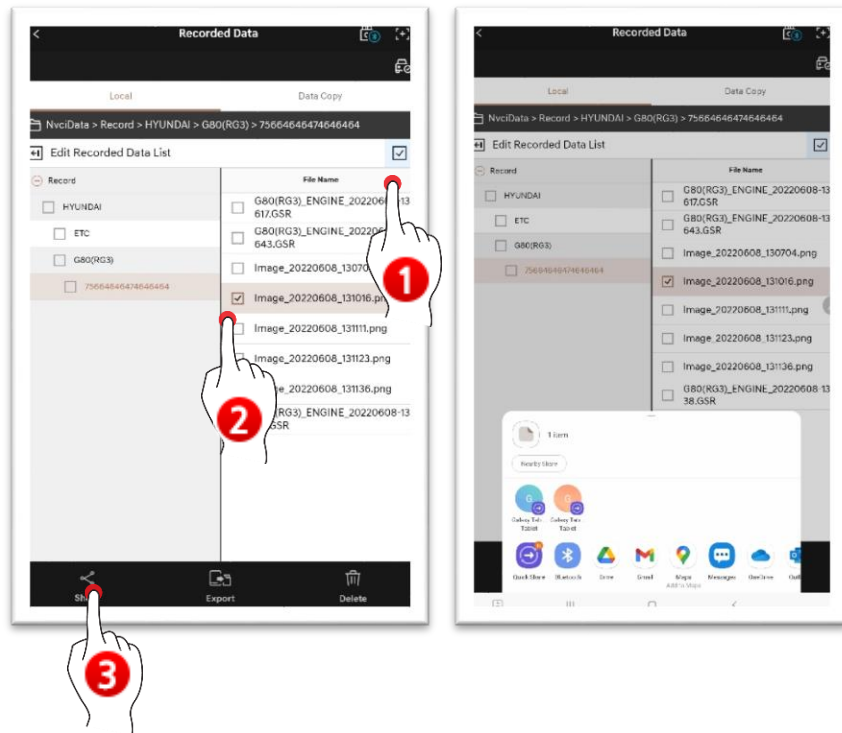


	Maximize/minimize
	View one image page
	View multiple image pages (maximum of 4 pages)
	Detailed information of images
	Print

Sharing, Export and Delete

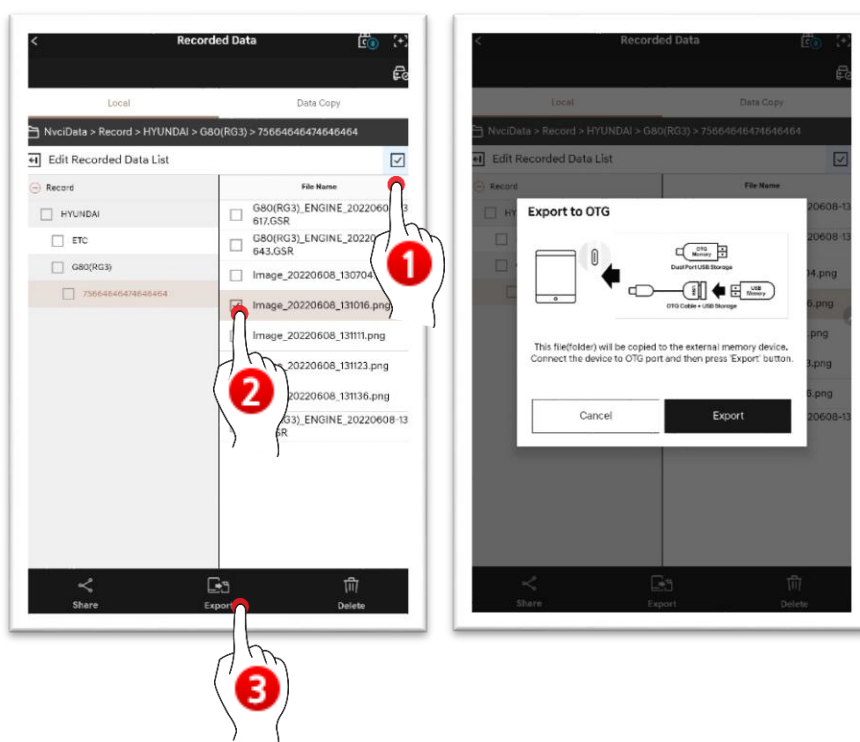
Sharing

You can share the data by using various methods supported by your tablet.



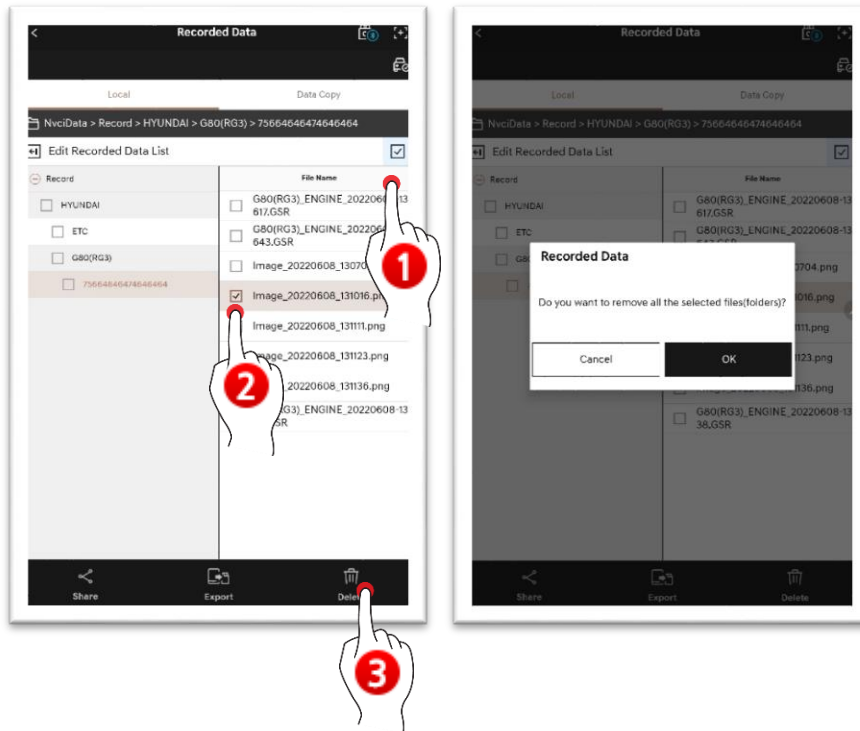
Export

You can export the data through an external saving device.



Delete

You can delete the data via Delete button.



Data Copy

You can copy and paste the data files saved in VCI to your tablet PC.

Select a data to copy, and touch 'Data Copy' button.

※ It is saved in the file path of NvciData/Record of internal storage device.

