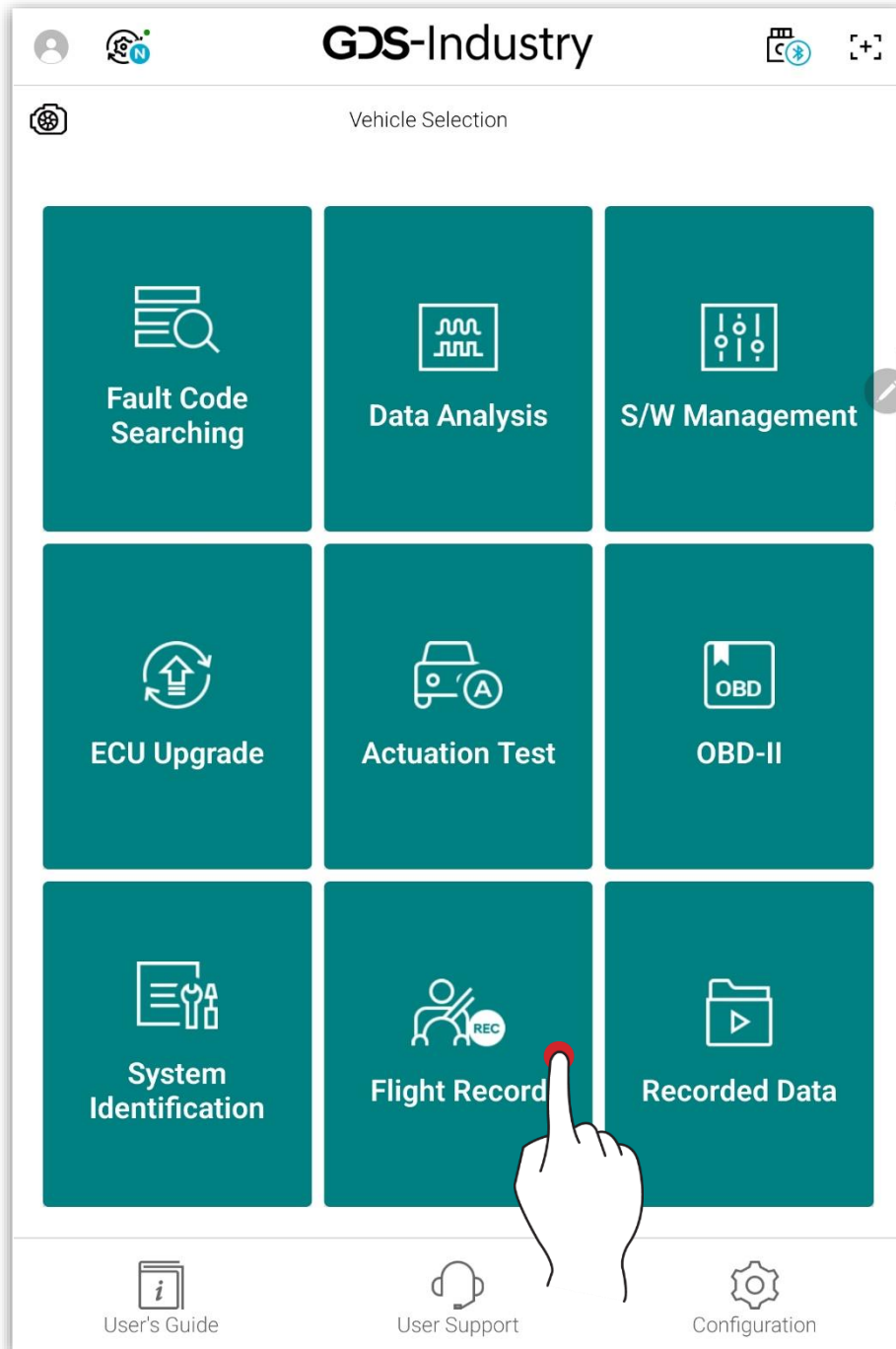


## Driving Data Record

This is the function to record the data output while driving vehicles.



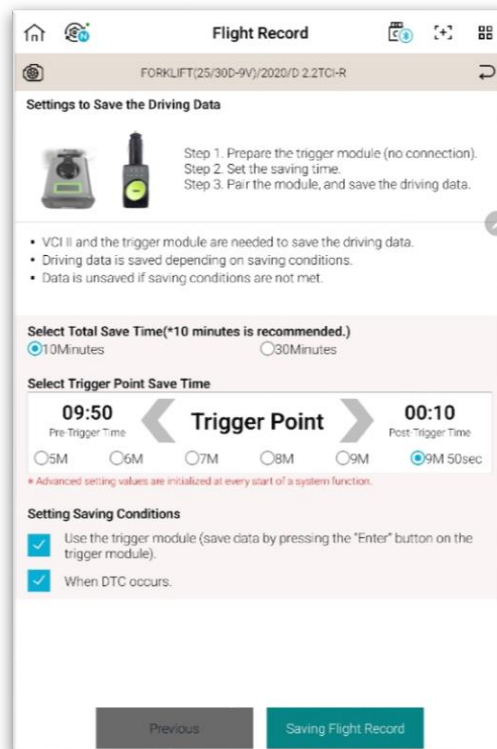
# Item Selection

Please select the item of the system sensor which you want to record.

The screenshot shows the 'Flight Record' application interface. At the top, there is a header with a home icon, a refresh icon, the title 'Flight Record', and several utility icons. Below the header is a sub-header with a gear icon, the text 'FORKLIFT(25/30D-9V)/2020/D 2.2TCI-R', and a refresh icon. The main content area is titled 'Edit Sensor List' and is split into two columns. The left column, 'Item Selection', features a search bar with the placeholder text 'Please enter the search word.' and a list of sensors including 'Air Mass per Cylinder', 'Barometric Pressure Sensor', 'Accelerator Pedal Position Sensor-2 Voltage', 'Fuel Quantity', 'Battery Voltage', 'Elec. Fuel Pump Relay', 'Boost Pressure Actuator', 'Fuel Temperature Sensor', 'Engine Status', 'Fuel Pressure Set Point Value', 'Output of Fuel Metering Unit(MPROP)', 'Raw Voltage of Exhaust Temperature Sensor', 'Raw Voltage of Temperature at Upstream of the DPF', 'Raw Voltage of Differential Pressure Sensor (DPF OPT)', and 'Differential Pressure of Particulate Filter (CPF OPT)'. A 'Select All' label points to a checkbox in the top right of this section, and a 'Search Item' label points to the search bar. The right column, 'Selected Item', contains a list of selected sensors: 'Accelerator Pedal Position Sensor', 'Pressure Control Valve(Rail)', 'Ignition Switch', 'Accelerator Pedal Position Sensor-1 Voltage', 'MIL Status Indicator(MIL by DTC)', and 'GRU(Glow Relay Unit) Control Unit'. A 'Cancel All' label points to a circular refresh icon in the top right of this section, and a 'Change the Order' label points to a vertical list icon on the right side. A blue vertical bar with a double arrow icon is positioned between the two columns, with an 'Open/Fold' label pointing to it. At the bottom center, there is a teal 'Save' button.

## Setting for Driving Data Record

Please set the condition for driving data record.



### ! Tip

#### Conditions for Pairing VCI II/ VCI III and Trigger Module

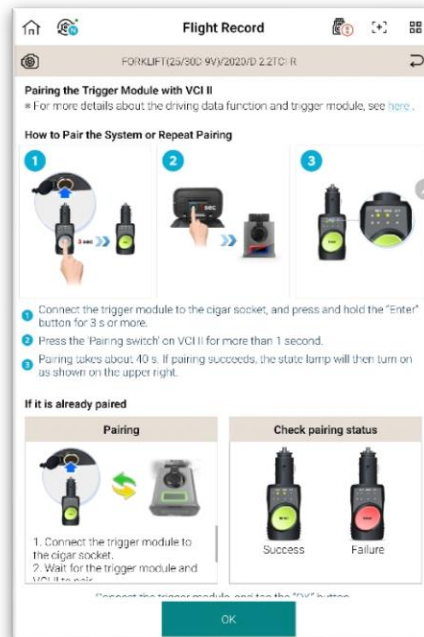
- Pairing between VCI II module and tablet
- Not connecting trigger module to cigar power

#### Setting Record Time Before/After Trigger

- Ex) If you set 10 seconds before/after Trigger, it records 10 seconds before/after occurrence of fault code or before/after pressing the 'Enter' button of trigger module.

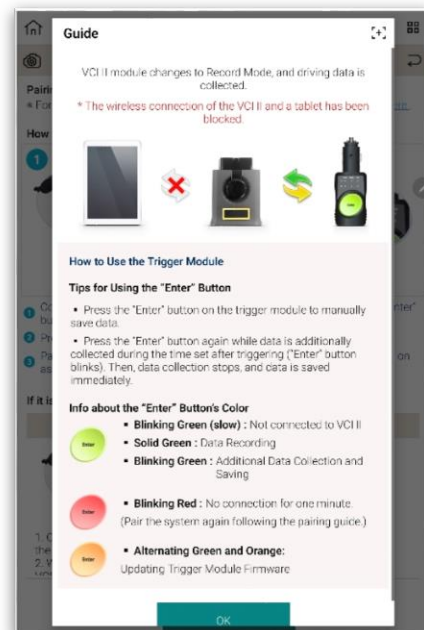
## Pairing between Trigger Module ↔ VCI II / VC III

Please refer to the picture below to proceed the pairing.



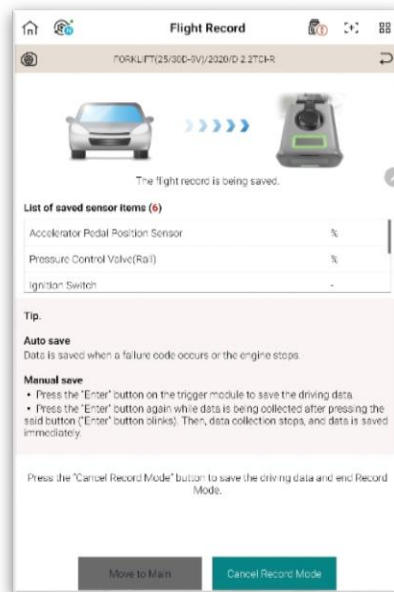
Tip

Please refer to the picture below for the information of colors and how to use the trigger module.



## Driving Data Record

When the green light comes on the 'Enter' button of trigger module, it means the setting for Driving Data Record is complete. Please check the information how to use the trigger module before you drive your vehicle.



## Deactivate Record Mode

You can deactivate Record Mode of VCI II/ VCI II and analyze the recorded driving data after you copy it to the tablet.

