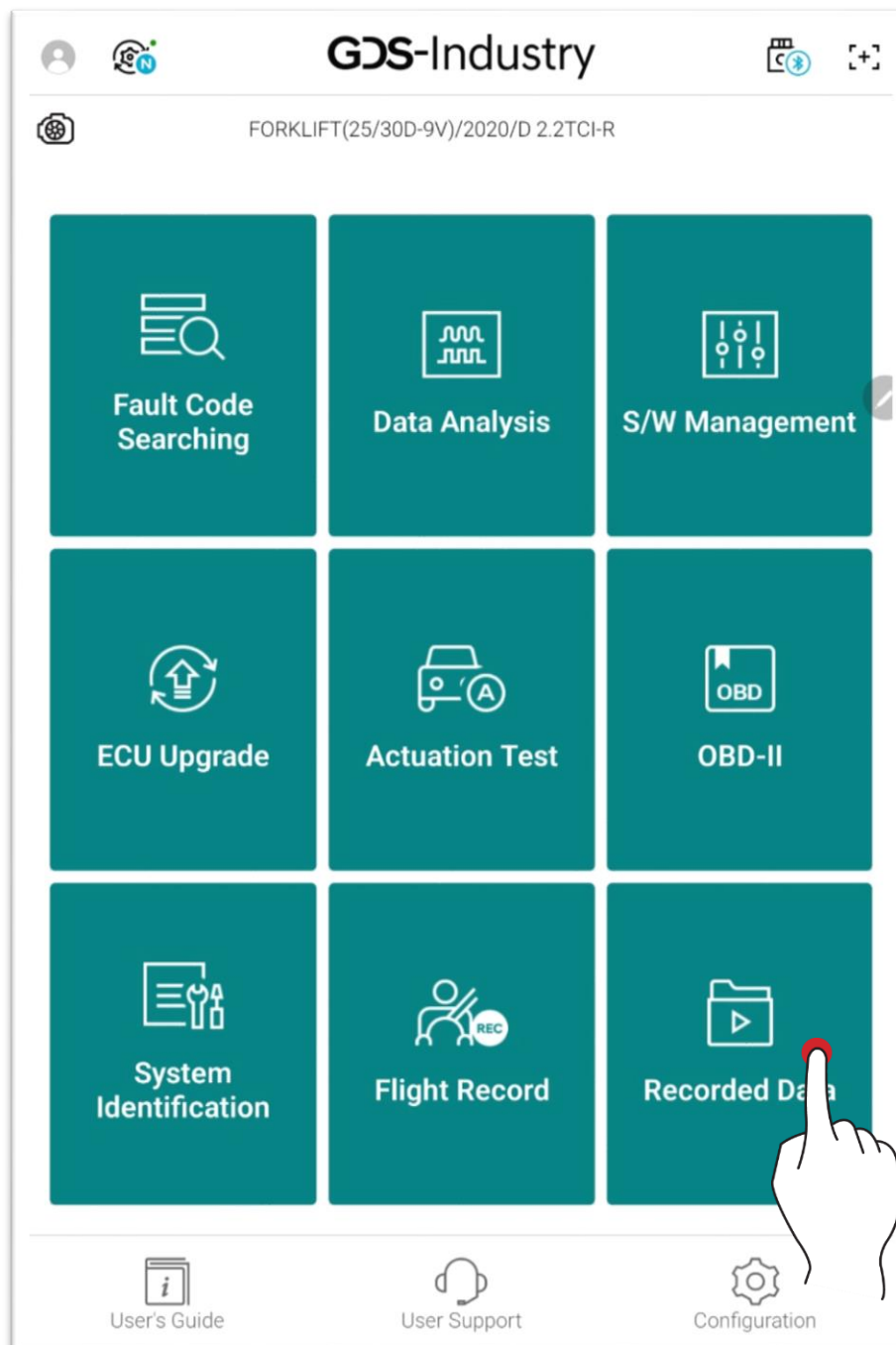


Recorded Data

You can view the data saved in tablet PC, and also copy the driving data saved in VCI II / VCI III.



Basic Operation

The user can view, share or delete the data saved in tablet PC based on the user's need.

The screenshot shows the 'Recorded Data' app interface. At the top, there is a title bar with a back arrow, the title 'Recorded Data', and icons for a camera and a share/delete symbol. Below the title bar, there is a breadcrumb path: 'NvciData > Record > HY_INDUSTRIAL > FORKLIFT(33D-9H) > ETC'. The interface is divided into two tabs: 'Local' (selected) and 'Data Copy'. Below the tabs, there is a 'Recorded Data List' table. The table has two columns: 'Record' and 'File Name'. The 'Record' column contains a list of folders: 'Record', 'HY_INDUSTRIAL', 'FORKLIFT(25_30D-9V)', 'ETC', 'FORKLIFT(33D-9H)', and 'ETC'. The 'File Name' column contains corresponding image files: 'Image_20230417_105910.png', 'Image_20230417_110243.png', 'Image_20230417_110356.png', 'Image_20230417_110407.png', 'Image_20230417_110434.png', and 'Image_20230417_110438.png'. The 'ETC' folder is currently selected. At the bottom of the screen, there is an 'Open' button. Annotations with arrows point to specific elements: 'Spread/fol' points to the folder icon in the breadcrumb path; 'Recorded Data List' points to the table header; 'Share/delete' points to the share/delete icon in the top right; and 'Open a saved data' points to the 'Open' button.

Spread/fol

Recorded Data List

Share/delete

Open

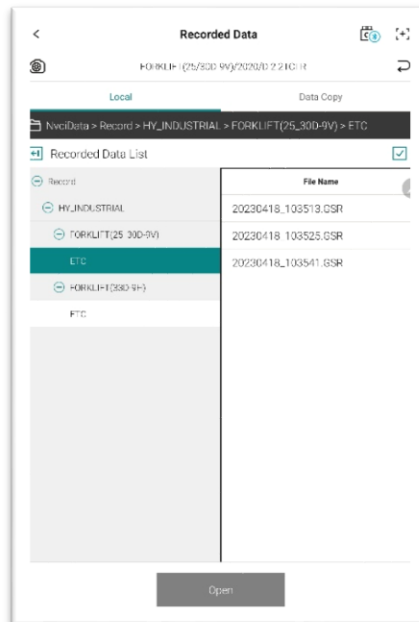
Open a saved data

Record	File Name
Record	
HY_INDUSTRIAL	Image_20230417_105910.png
FORKLIFT(25_30D-9V)	Image_20230417_110243.png
ETC	Image_20230417_110356.png
FORKLIFT(33D-9H)	Image_20230417_110407.png
ETC	Image_20230417_110434.png
	Image_20230417_110438.png

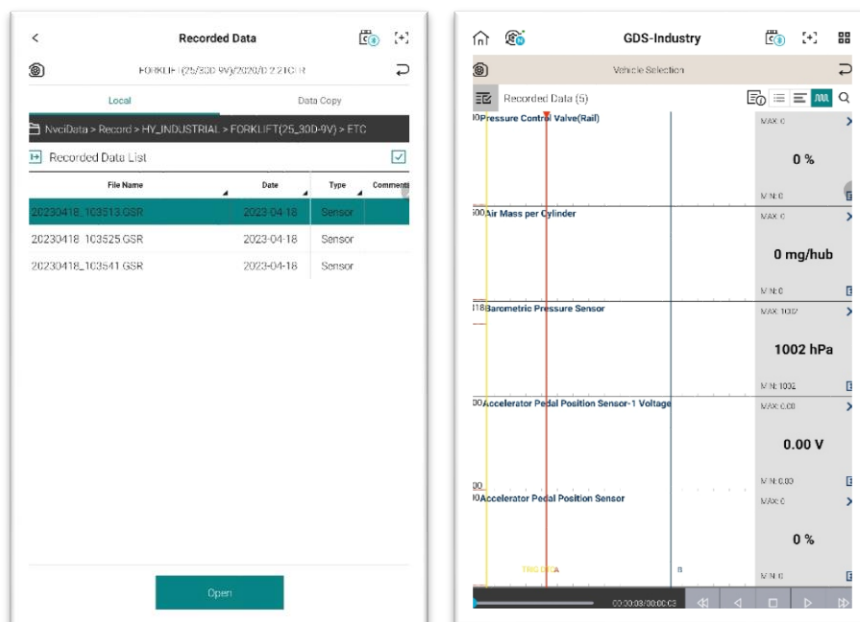
Open Files

Saved Data File (.GSR)

You can check the data in Text Mode and Graph Mode.



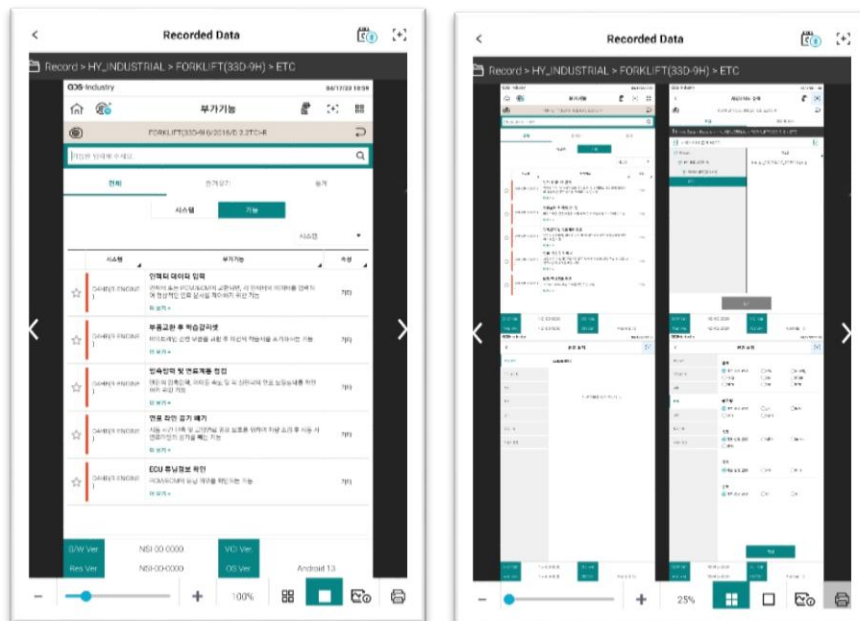
<Text Mode>



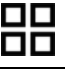
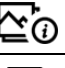



<Graph Mode>

Image Files

You can check the image files that are saved.

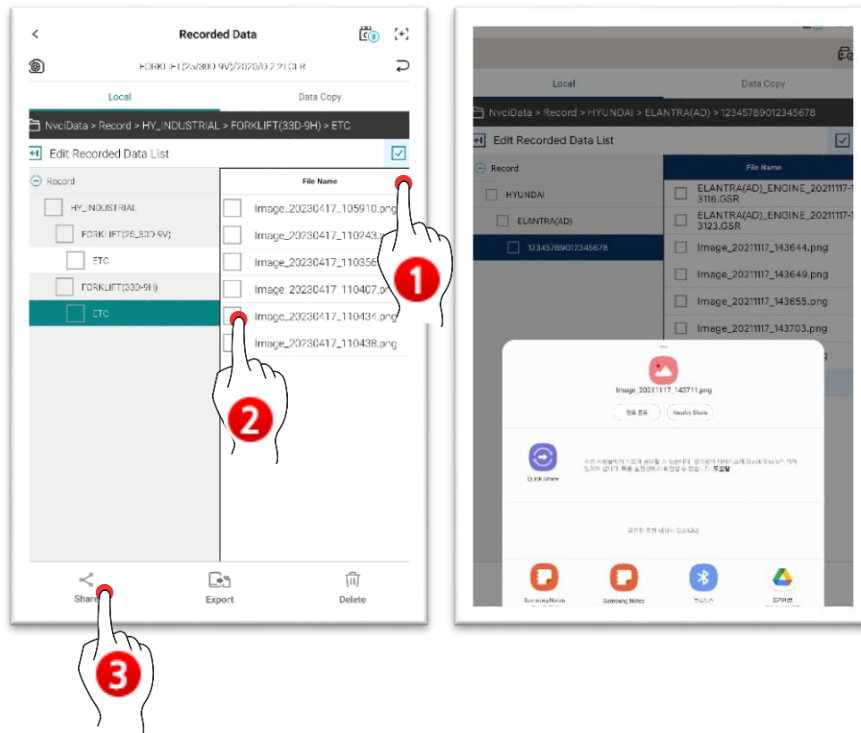


	Maximize/minimize
	View one image page
	View multiple image pages (maximum of 4 pages)
	Detailed information of images
	Print

Sharing, Export and Delete

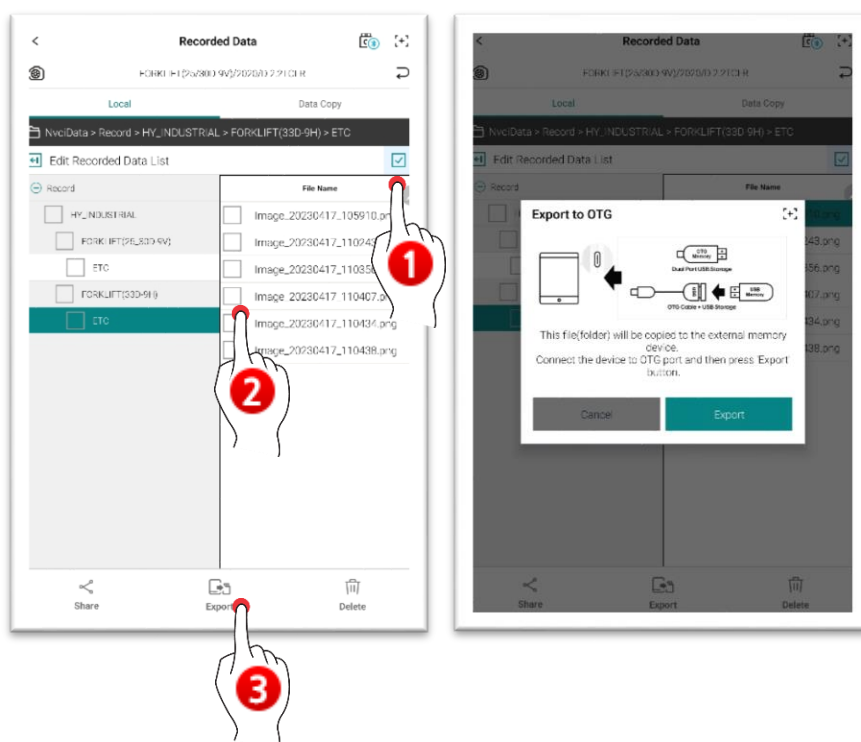
Sharing

You can share the data by using various methods supported by your tablet.



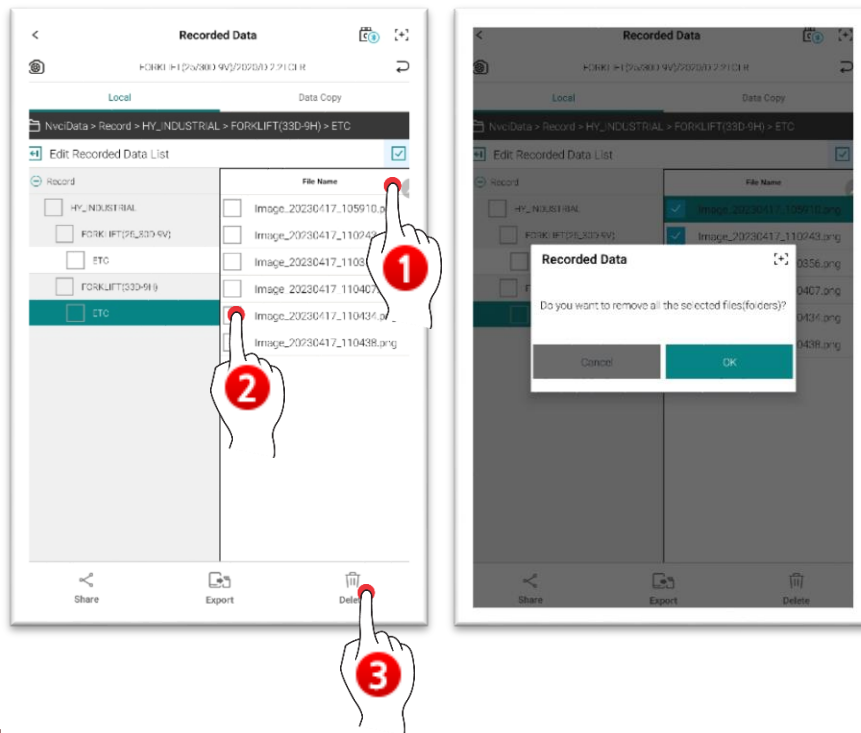
Export

You can export the data through an external saving device.



Delete

You can delete the data via Delete button.



Data Copy

You can copy and paste the data files saved in VCI to your tablet PC.

Select a data to copy, and touch 'Data Copy' button.

※ It is saved in the file path of NvciData/Record of internal storage device.

