

# **Smart DLogger (CVCI, CVCI II)**

## **Quick Guide**

# ■ Index

## I. Screen composition

## II. Process for using Smart D-Logger

### 1) Event Setup

- Register CVCI II module (USB or Bluetooth)
- Auto Mode / Manual Mode – Using Smart D-logger
- Directly copy & paste event files – Not using Smart D-logger

### 2) Check ready status

- Ready status
- Pairing fail
- Event file is not matched

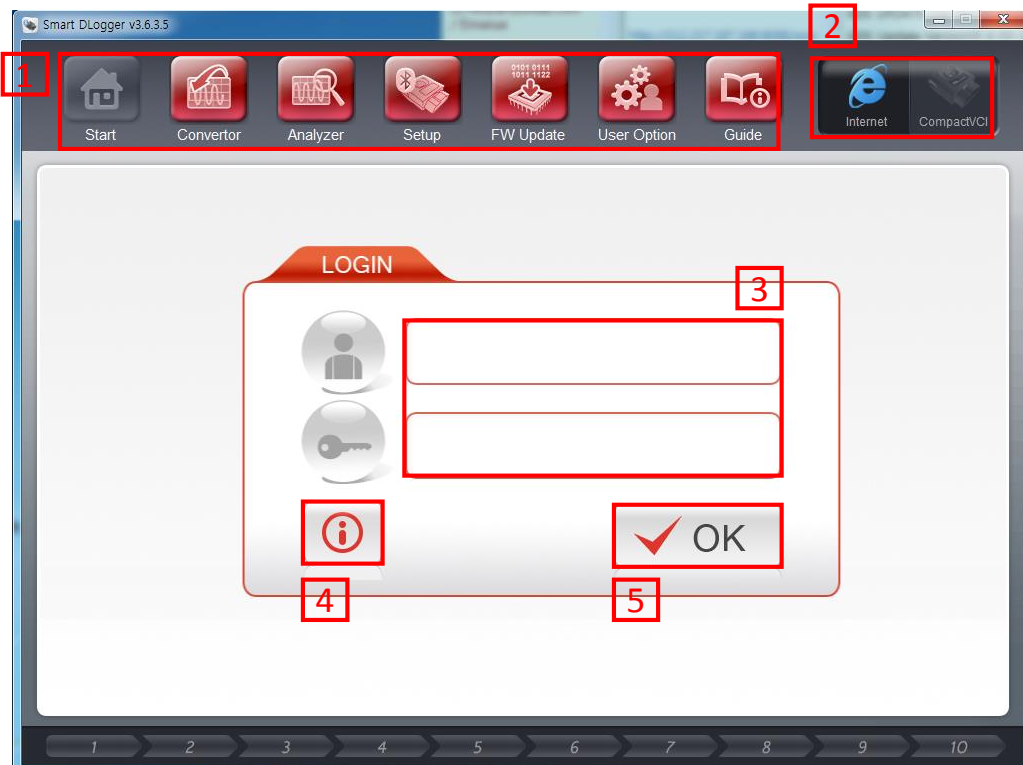
### 3) Record

- Record data

### 4) Conversion

- Record data Conversion

# I. Screen composition



## 1) Program composition

- ① Start – starts event set-up.
- ② Convertor – executes conversion function.
- ③ Analyzer – executes analyzer program.
- ④ Setup – executes module setup.
- ⑤ FW Update – executes FW update function.
- ⑥ User Option – executes user option.
- ⑦ Guide – provides Smart Dlogger guide.

2) Connection check : Check internet and module connection.

3) Login : ID and password for logging in

4) Notice : shows update notice

5) OK : Login button

# II. Process for using Smart D-Logger

## 1. Event Setup

### 1) Device setup

- ① Device registration via USB connection
- ② Device registration via Bluetooth connection



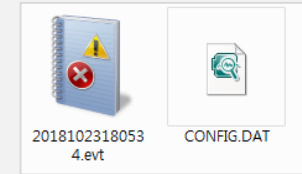
### 2) Setup events using Smart Dlogger

- ① Auto Mode
- ② Manual Mode (Not existed vehicle)



### 3) Directly copy & paste event files

- ① CVCI – Copy & paste event files on SD card
- ② CVCI II – Copy & paste event files on removal disk



## 2. Ready status

- Ready for recording
  - ① Pairing status.
  - ② Setup an event file.



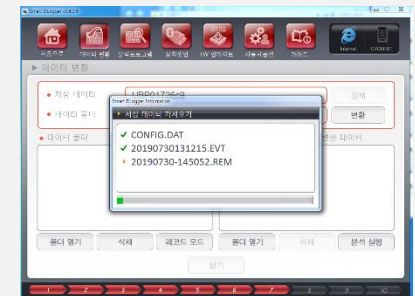
## 3. Record

- Press 'Enter' button for recording data



## 4. Conversion

- After driving, converting record data



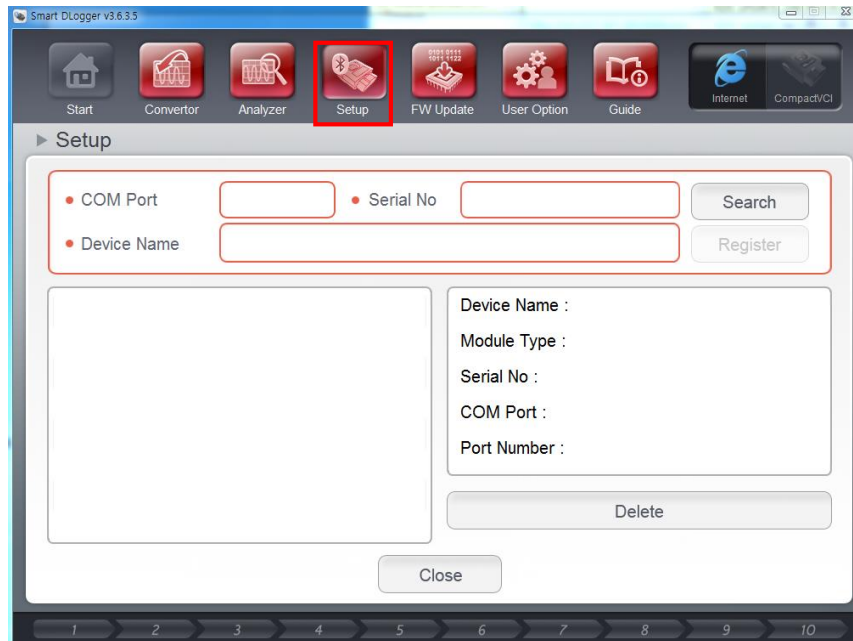
# 1. Event setup

## - Register CVCI/CVCI II module

① Login Smart Dlogger

② Module setup on Smart Dlogger

- ✓ Search for CVCI / CVCI II modules after vehicle connection or power-on.
- ✓ When a module is found, the serial number is displayed and registered with a Bluetooth or USB connection.



# 1. Event setup

※ To set up a device by connecting a USB cable (*CVCI II only*)

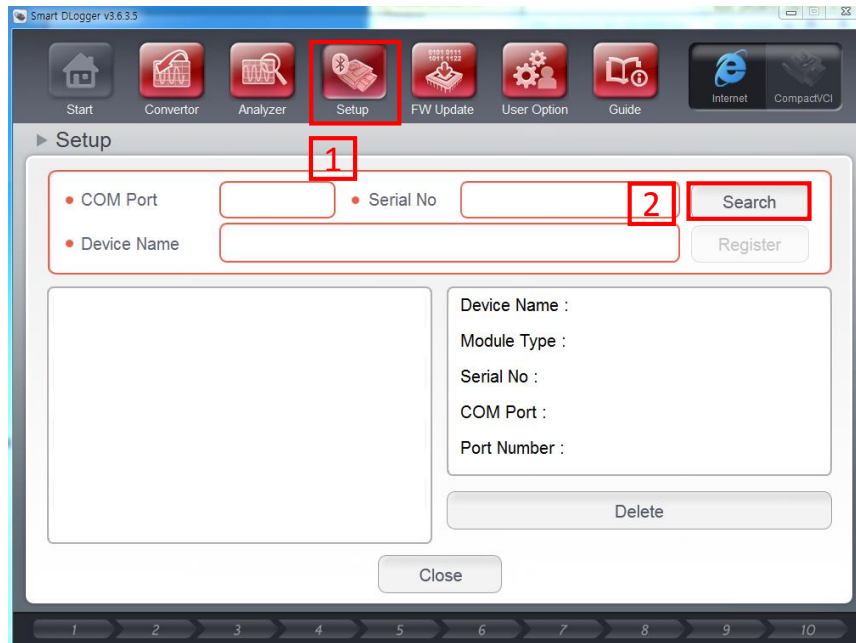
1. Connect CVCI II to OBD adapter on the vehicle or power cable to supply power.
2. After supplying power, use USB cable (*30pin to USB cable*) to connect CVCI II to PC.
3. CVCI II LED will turn **purple** color from **blue** to when you connect PC by USB cable.
4. Check the device is recognized as removal disk.
5. Click setup and search on Smart Dlogger.



• 30pin to USB cable

① Setup

② Search



[CVCI II LED Status]

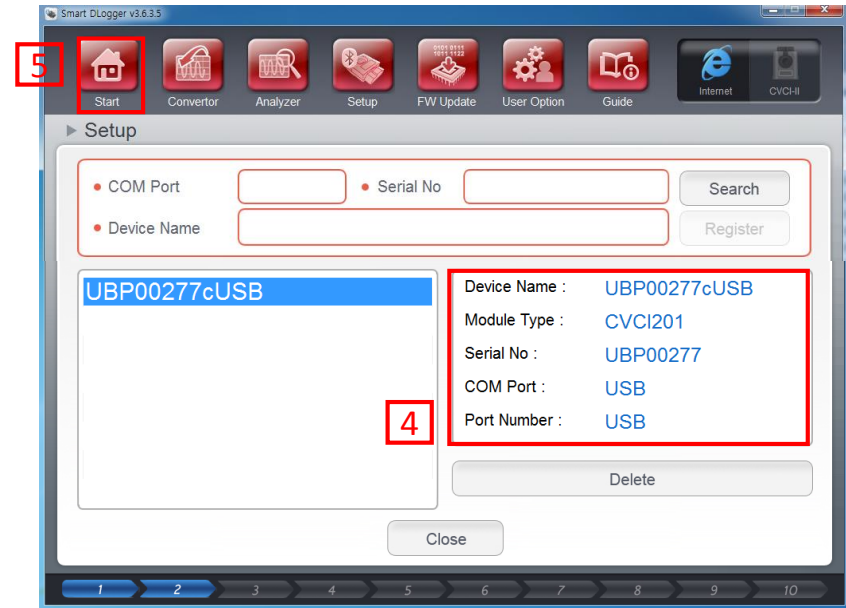
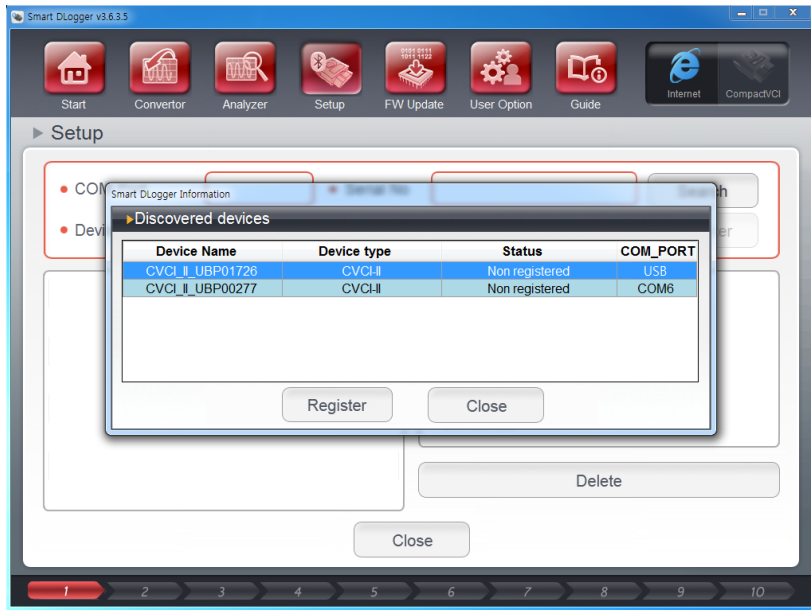


- **Purple**: In case of power supply and recording
- **Blue**: In case of connection between PC and USB



- **Green**: In case of communicating vehicle/PC
- **Red**: In case of commutation failure (over 3min after power supply)

# 1. Event setup



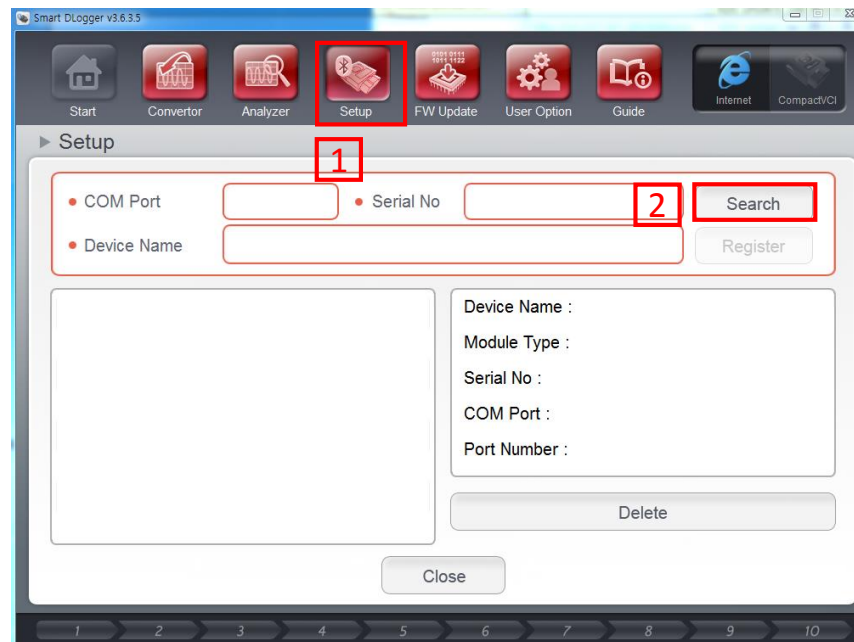
- ③ Register searched CVCI II. During registration, CVCI II LED will flash as green color.
- ④ Checked registered device. If the device is not registered by USB, it may be registered by Bluetooth. Remove the device and register it again with disabling Bluetooth.
- ⑤ Once device setup is complete, Go to 'Start' to event set-up.

# 1. Event setup

※ To set up a device by Bluetooth.

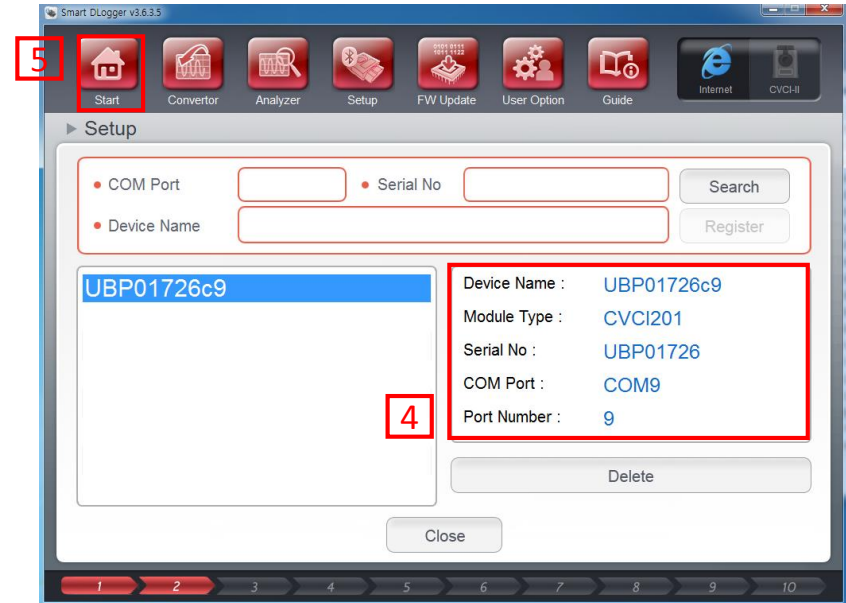
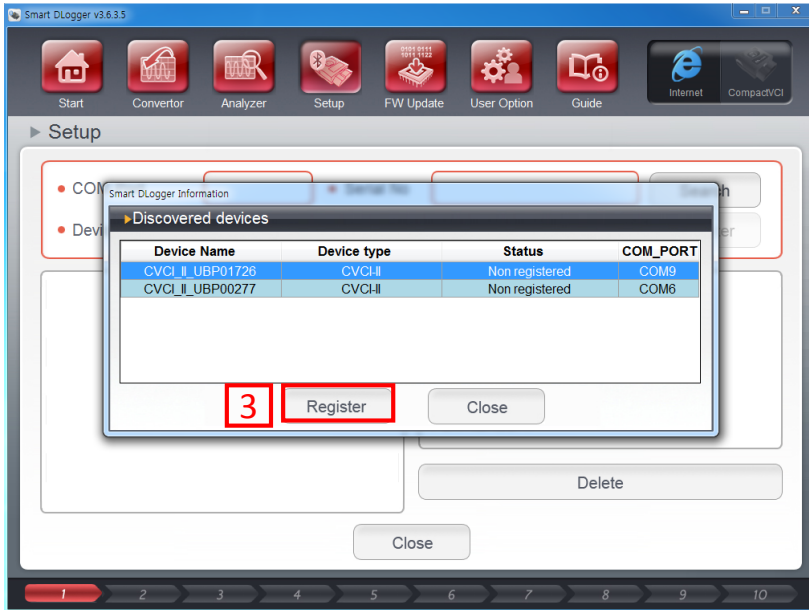
1. Connect CVCI II to OBD adapter on the vehicle or power cable to supply power.
2. CVCI II LED will turn on as purple color.
3. Click setup and search on Smart Dlogger.

- ① Setup
- ② Search





# 1. Event setup



- ③ Register searched CVCI II. During registration, CVCI II LED will flash as green color.
- ④ Check registered device condition. If COM port is assigned, the device is registered well.
- ⑤ Once device setup is complete, Go to 'Start' to event set-up.

※ If you cannot search or register with Bluetooth, you will need to check for Windows updates/ drivers/dotnet etc.

Please check the FAQ below for details.

[FAQ](https://support.gitauto.com/hc/en-gb/articles/360019014534) <https://support.gitauto.com/hc/en-gb/articles/360019014534>

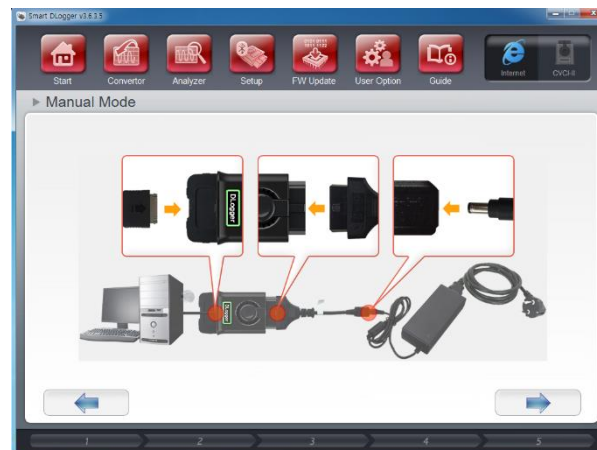
# 1. Event setup

## - Auto Mode / Manual Mode (Using Smart Dlogger)

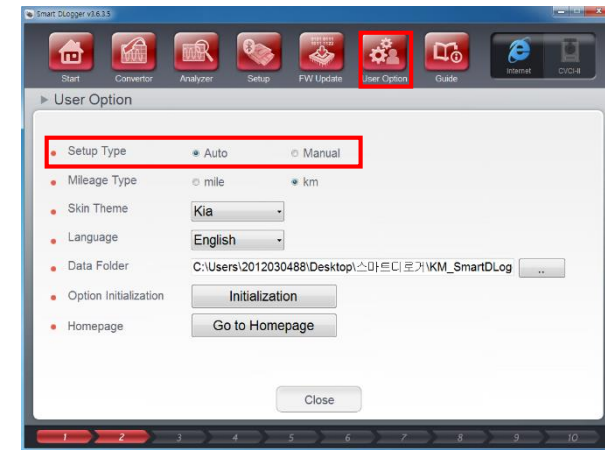
- ① Auto Mode – Read the VIN and ROM ID from the vehicle via CVCI II, select the symptom, and then combine the information to download the event file from the server and set it up automatically.
- ② Manual Mode – This is available if there is no vehicle at present. If you know the vehicle information including the ROM ID, enter it directly and download the event file from the server to set it up.



• Auto Mode



• Manual Mode



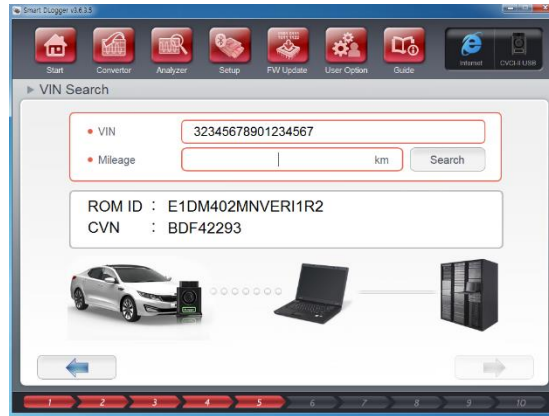
• User option – Select Auto/Manual mode

# 1. Event setup

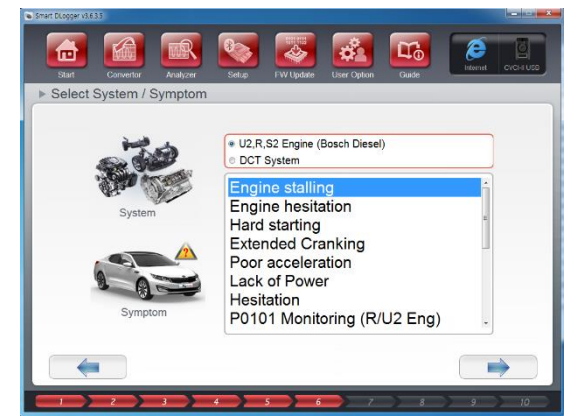
- Auto Mode



1) Device connection, and searching vehicle information



2) Searching ROM ID on the server



3) Select the symptom



4) Automatically download event files corresponding ROM ID and the symptom



5) Check CVCI II and LED status



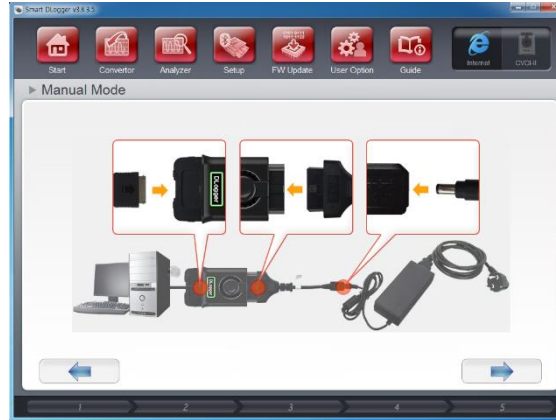
6) Setup complete

# 1. Event setup

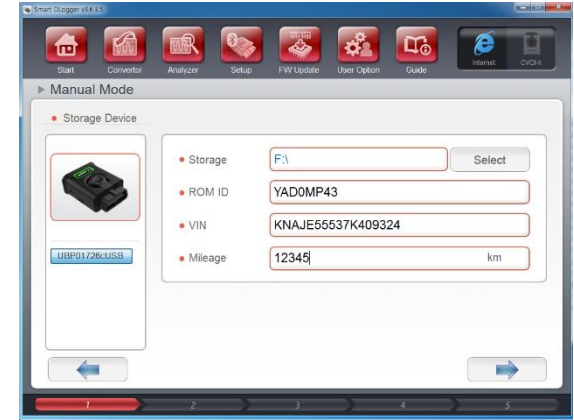
- Manual Mode



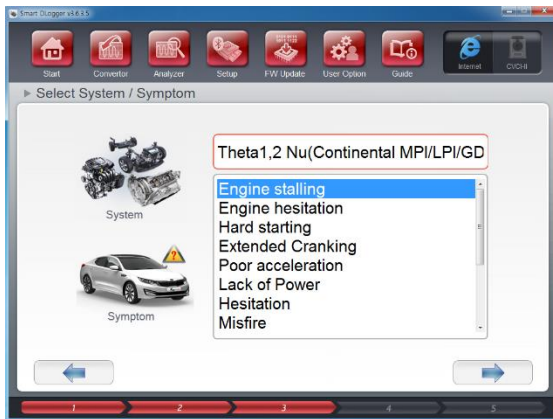
1) Select device



2) Connect device to PC



3) Input vehicle information



4) Select the symptom



5) Download event files corresponding ROM ID and the symptom you input



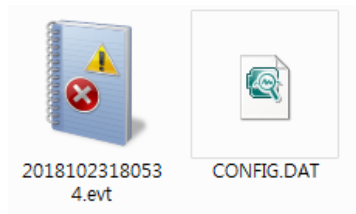
6) Setup complete

# 1. Event setup

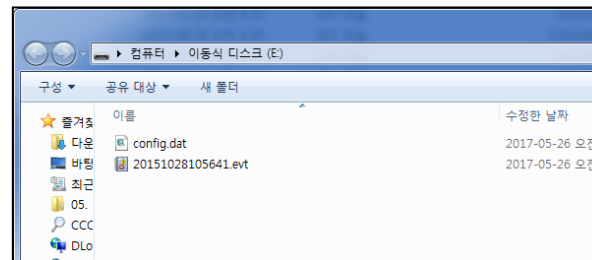
- Directly copy & paste event files (Not using Smart Dlogger)
  - If you receive event files from KMC, you can copy & paste event files to CVCI / CVCI II directly.
- ① CVCI – Inset SD Card on your local computer, and copy & paste event files on SD card.
- ② CVCI II – Connect CVCI II to local computer, and copy & paste event files on Removal disk.
  - ※ Connecting CVCI II by USB cable allows my computer to recognize it as a removable disk.

## \*Note) Dlogger event files

- ✓ Dlogger Event files consists of two files and have extension as .evt and CONFIG.dat.
- ✓ Once the event file is created (set up), the module must be properly contained in the following two files.



- Event files (2)



- Completed copying event files to CVCI II

## 2. Check ready status

### 1) Ready status(Complete Event setup and pairing)

- To record, you must be in the following picture state:.

- CVCI II



- CVCI II – Turn on purple LED
- Trigger – Section VCI II/A and CCP/A turn on

- CVCI



- CVCI – Turn on green LED
- Trigger – Section VCI/CAN turn on

**[Caution] CVCI triggers and CVCI II triggers are incompatible.**

## 2. Check ready status

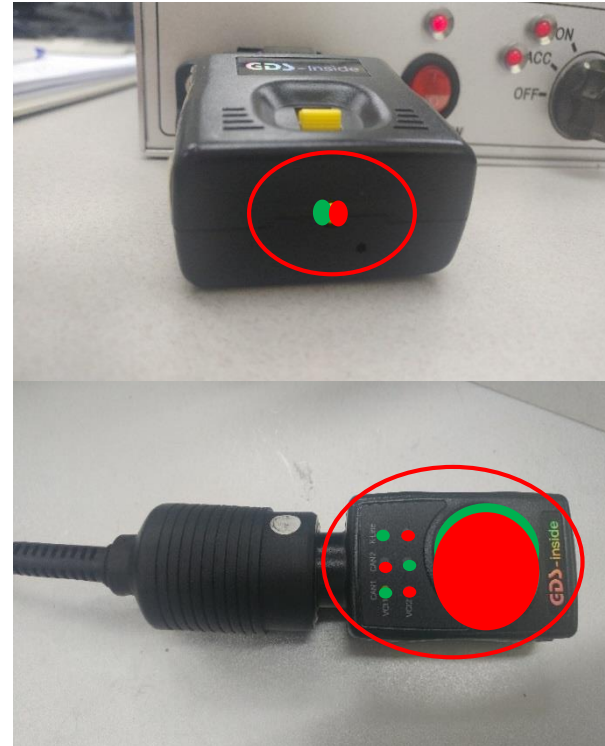
2) Pairing fail – In this case, pairing between CVCI (II) and trigger must be carried out.

- CVCI II



- If the trigger fails to find CVCI II, the trigger flashes red. Proceed through the pairing setup process.

- CVCI



- If the trigger fails to find CVCI, the trigger flashes green/red. Proceed through the pairing setup process.

## 2. Check ready status

The way of pairing for each equipment is shown below.

### • CVCI II



### • CVCI



1. Insert a pin into the bottom hole of the CVCI to proceed with initialization.
2. Press the 'Enter' button at least 5 seconds.
3. Trigger finds CVCI and goes through pairing.
4. The CVCI and trigger flash green when pairing is complete.
5. If pairing fails, please proceed from 1 again.



## 2. Check ready status

### 3) Not matched event files

- CVCI II



- Only the VCI II/A section flashing green is paired properly, but the event file is missing or does not match the vehicle. [Please proceed with the event setup again.](#)

- CVCI



- The figure above shows the event file not found in CVCI. [Please proceed with the event setup again.](#)



- The figure above shows that the CVCI event file does not match the vehicle. [Please proceed with the event setup again.](#)

### 3. Record

- Record data
  1. Make sure that the trigger is ready first.
  2. When ready status, **press the 'Enter' button whenever the symptom occurs**. Then, it will be recorded 50 seconds before and 10 seconds after the enter button is pressed.



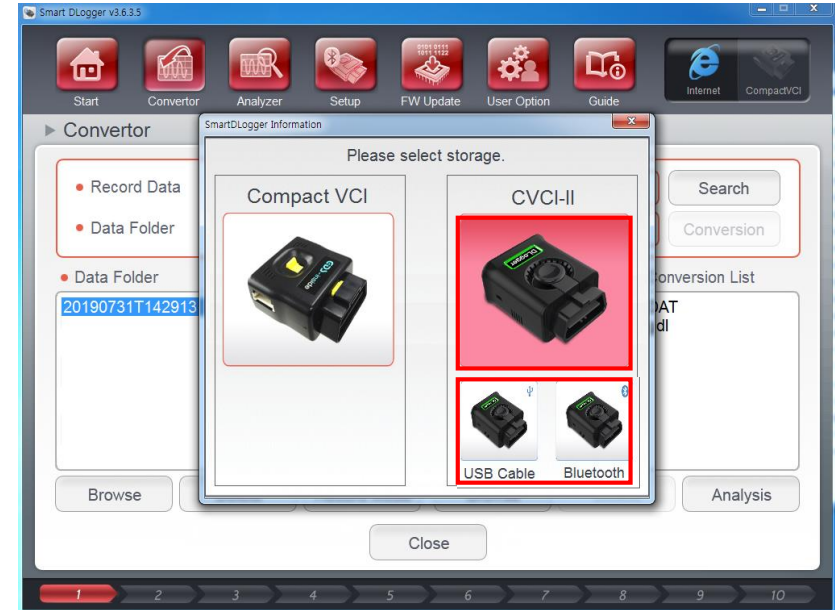
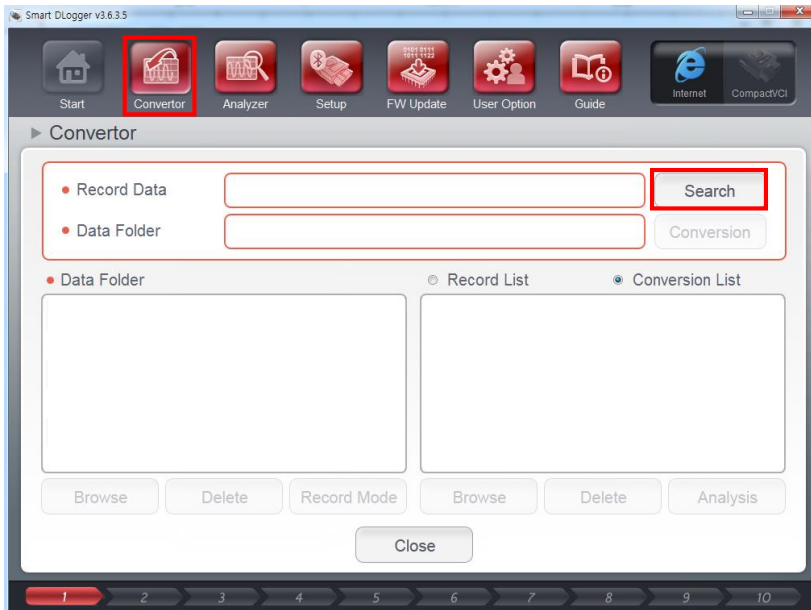
- Ready status.
- Pairing and event setup complete

- Press the 'Enter' button whenever the symptom occurs

# 4. Conversion

## - Record data conversion

1. Go to Converter on Smart D-Logger, and press the search button. Then, select the equipment and select the method how you transfer the data(USB Cable or Bluetooth) from CVCI to D-Logger. When you perform this, remove the trigger on cigar jack to cut off the power.

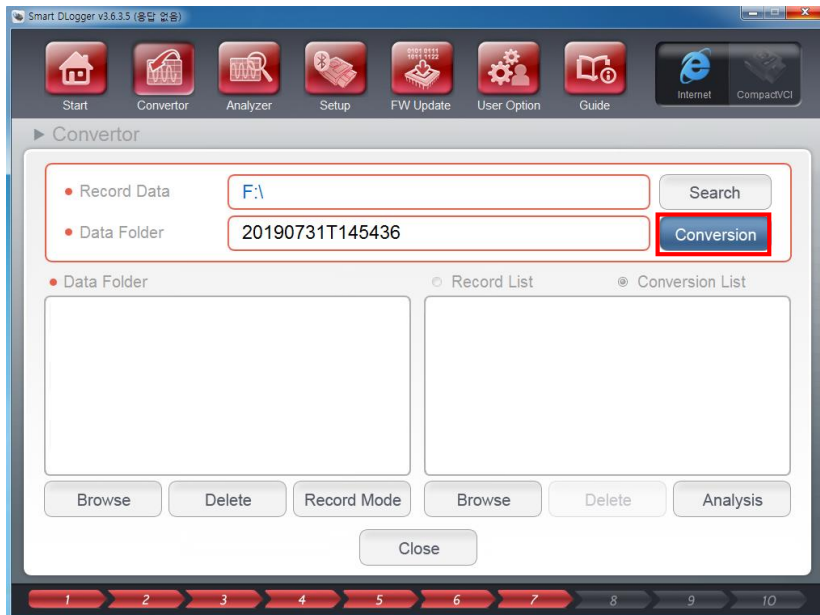


- Press Search button.

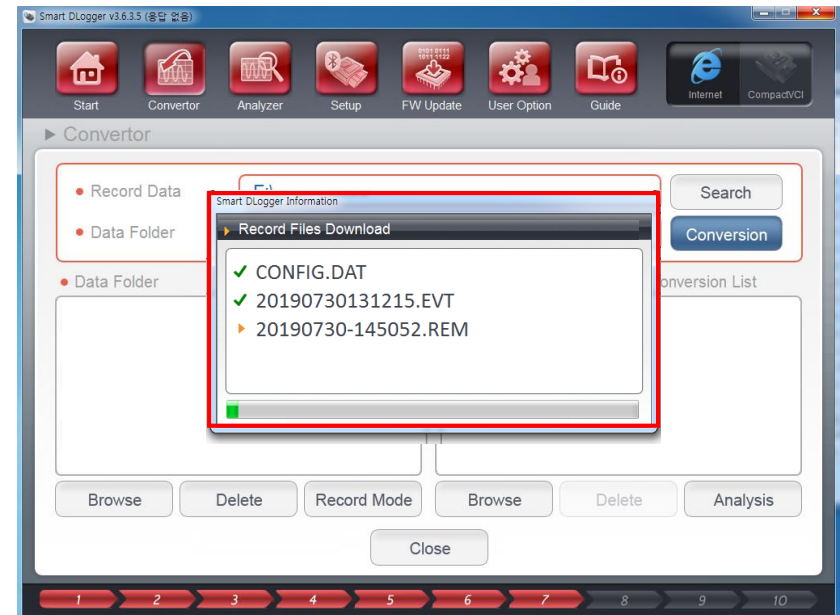
- Select device and transmission method (USB or Bluetooth)

# 4. Conversion

2. When Record data is searched, press 'Conversion' button for data conversion.



- Press Conversion button.

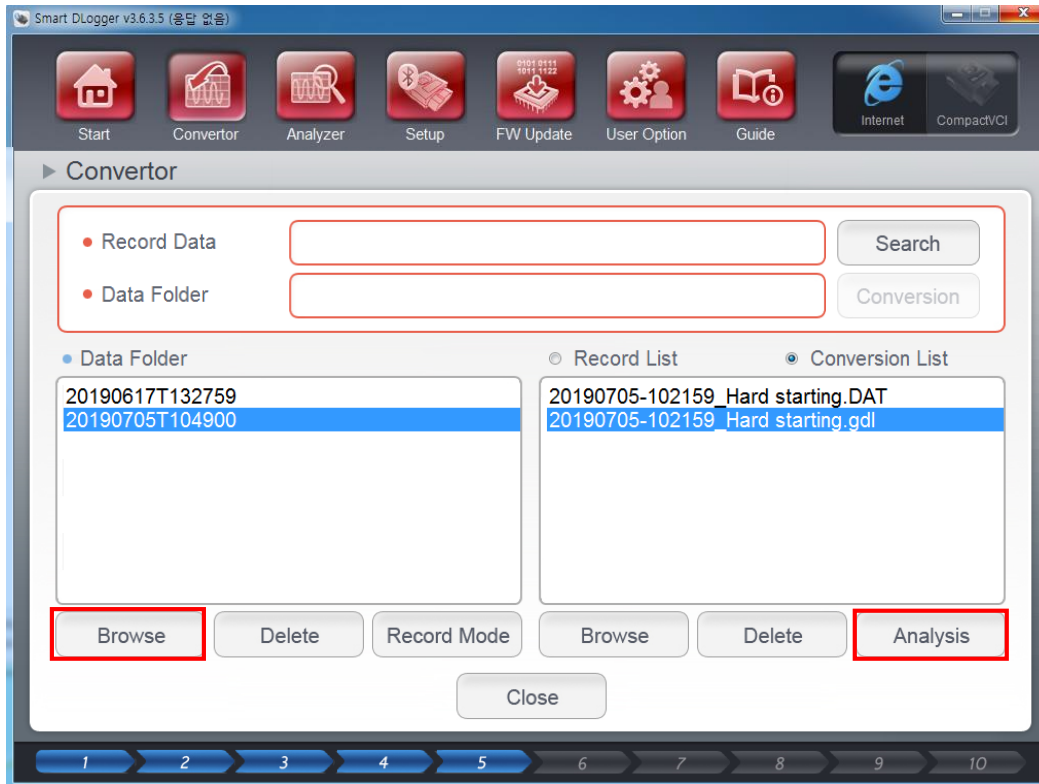


- Record files are downloaded and converted from device .

# 4. Conversion

## 3. The recorded data are converted as analyzable.

- Browse – If you want to open the folder, press the Browse button. You may provide the file HMC for analysis.
- Analysis – If you want to analyze on your own, press the Analysis button.



- ❖ When you press the trigger and data is saved, the file is stored as .rem extension file. After conversion on Smart Dlogger, .gdl and .DAT files are created.
- ❖ Press 'Analysis' to analyze the record files or ask to analyze the record files on Inside homepage.