



Download Smart Launcher

Web Site URL	http://m.site.naver.com/0NyZn
QR Code	

Preparation guide and precautions before installation



Before installing the software, read fully to understand the instructions and precautions before proceeding with the installation. The installation guide screen may differ depending on the Android OS specification.

- Before installation, keep the tablet fully charged (70% or more recommended).
- Check the network connection. Equipment authentication cannot be performed during offline installation.
- It is recommended to proceed with the installation after factory reset of the tablet. (Before factory reset of tablet, back-up the necessary data.)
- KDS 2.0 and KDS cannot be operated on one tablet, and when KDS 2.0 is installed, the installed KDS is automatically deleted.
- Complete product and usage period certification with the license key supplied by GIT.
- Do not disclose your license information to others.
- Please keep a separate note of the license information provided.

Smart launcher application installation

Smart Launcher is an application that performs authentication, download and installation of KDS 2.0 products.

GIT SMART LAUNCHER

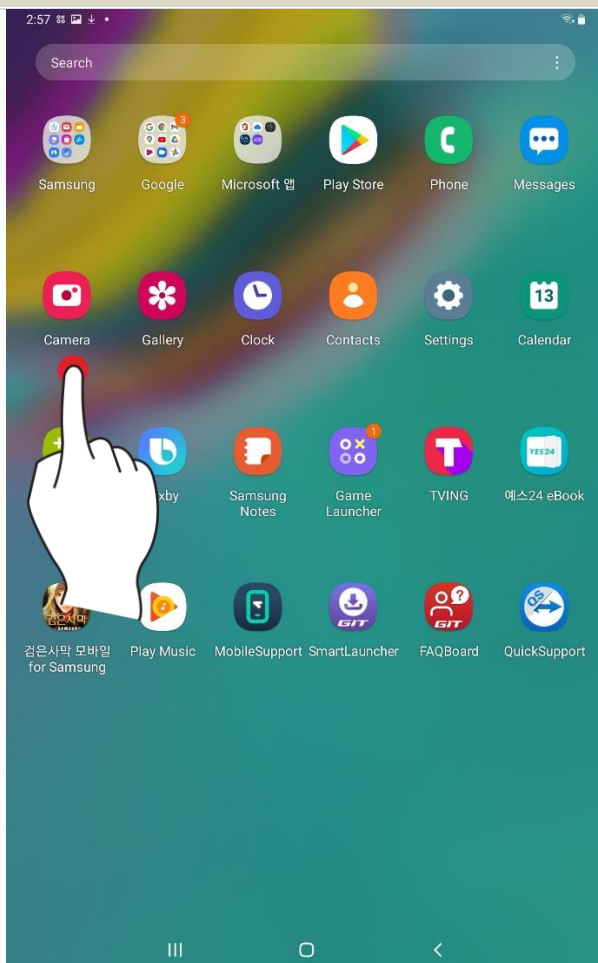


1. Download the application through the QR code or download link provided by GIT.
2. The QR code or download link information of the Smart Launcher will be provided by the email of our website, sales, agency or support representative.

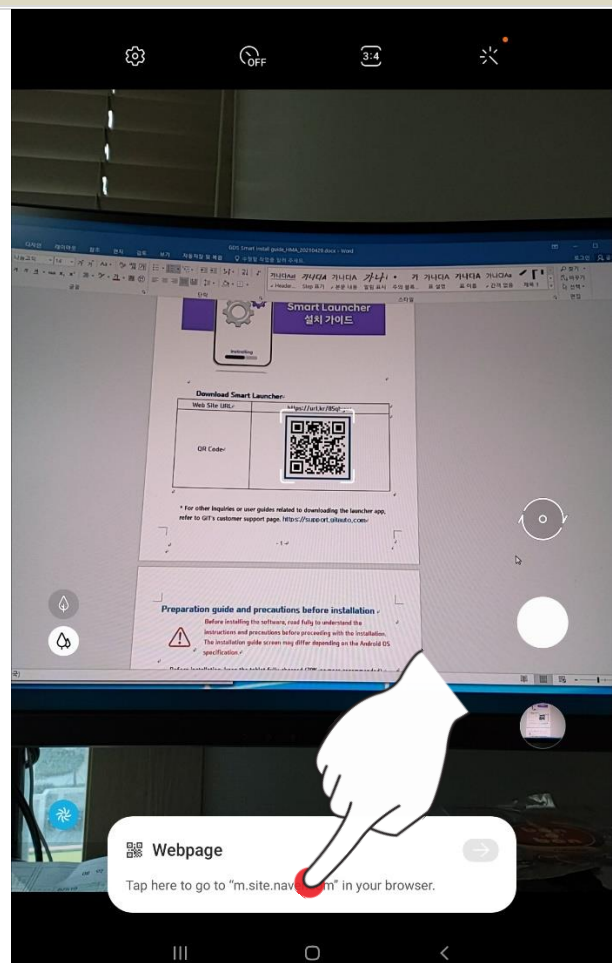
Application installation using QR code

1. Prepare the QR code provided in advance.
2. Run the tablet's camera application.
3. Recognize the QR code with the camera app and go to the connected web page.

Run Camera Application



Recognize QR code and go to linked web page



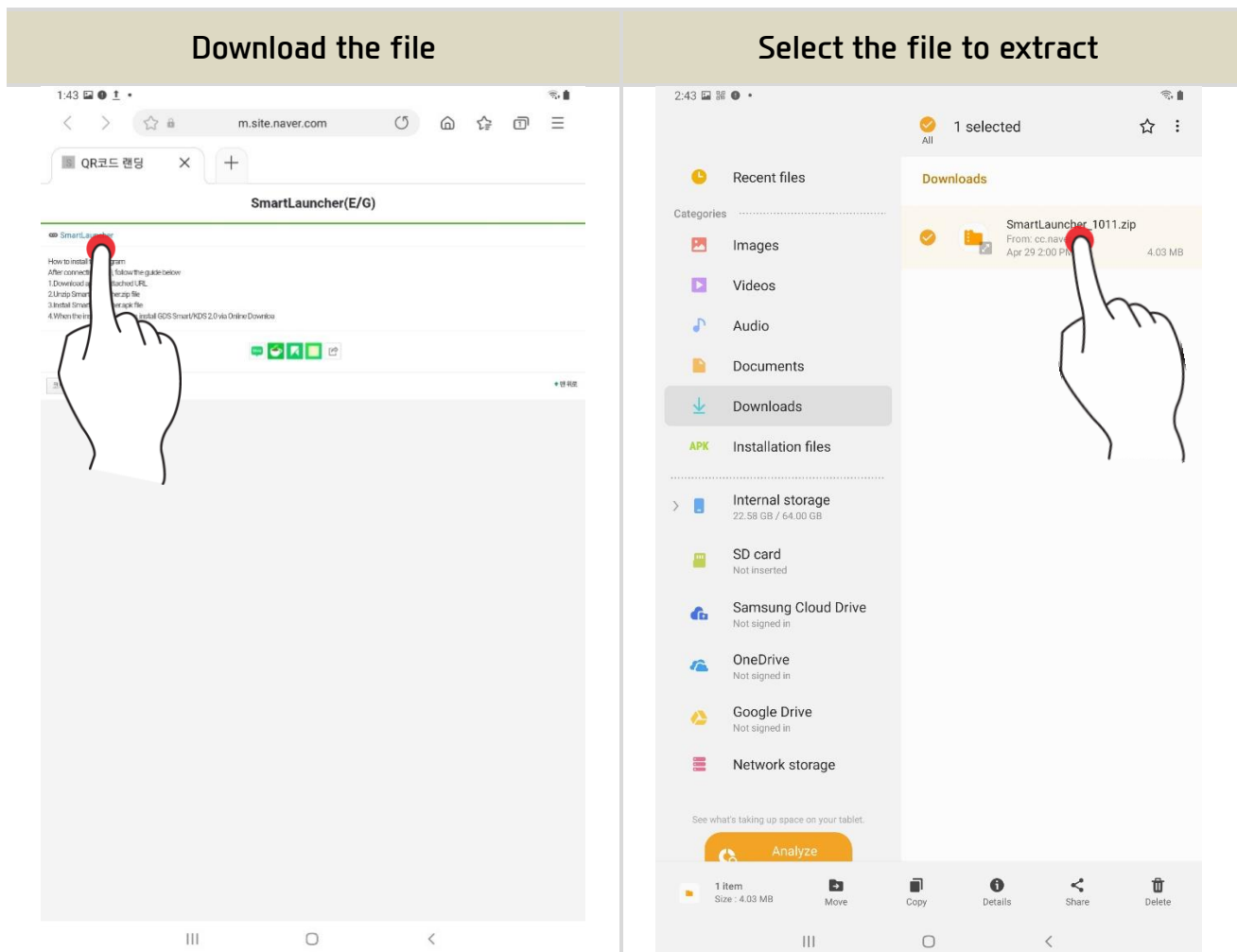


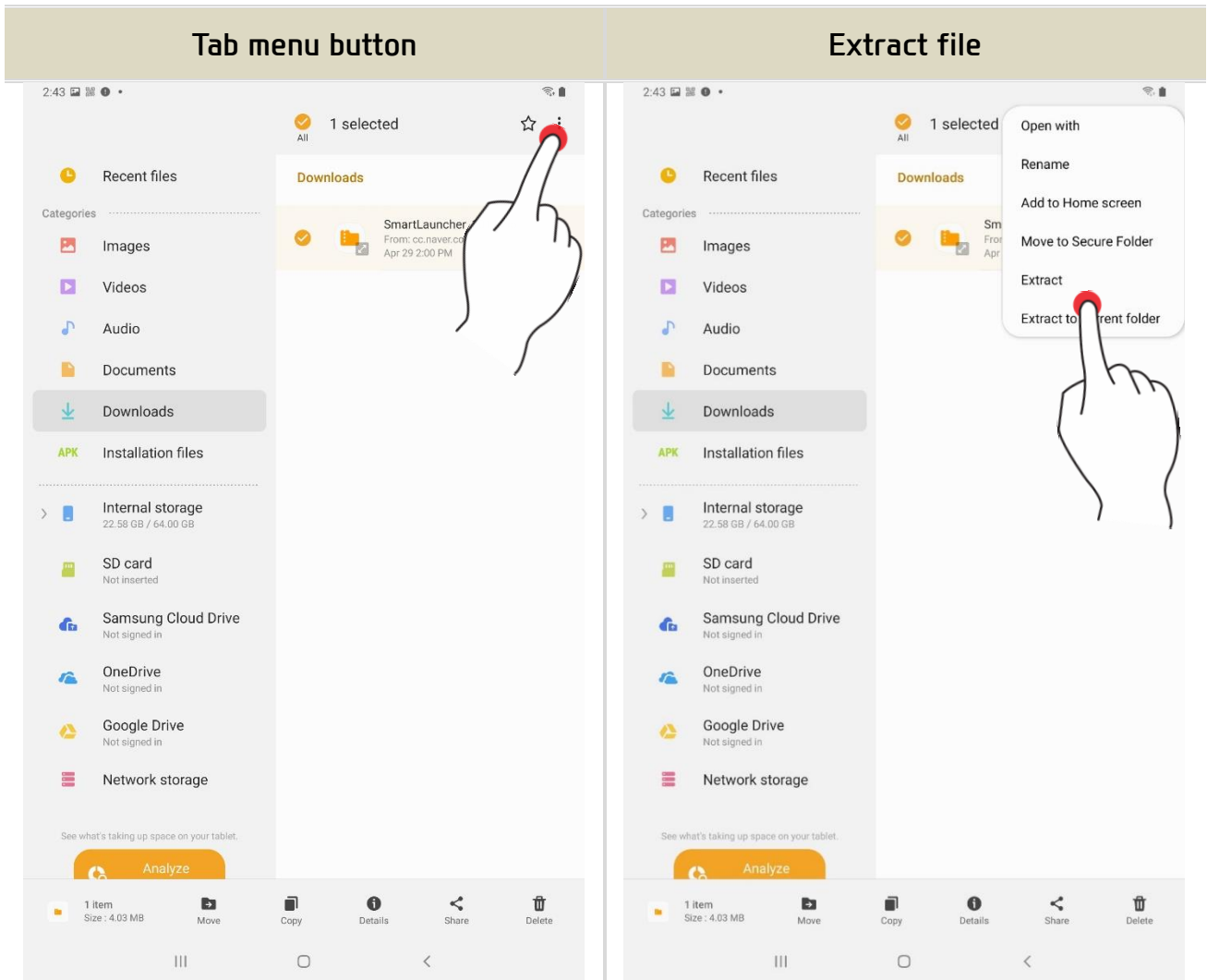
Depending on the Android version and tablet specifications, the QR code may not be recognized by the default camera application.

How to Solve:

1. Use another QR code reader application and download it.
2. Enter the URL link(<http://m.site.naver.com/0NyZn>) into the address bar of the web browser on the tablet to download it directly.

4. Tap the SmartLauncher.zip file on the connected web browser and download it.
5. When the download is complete, go to [Download] folder in Android “MY File” app.
6. Press and hold the zip file for at least 2 seconds to extract.
7. After selecting the file, tap the menu button on the top right.
8. Extract the SmartLauncher.zip file.



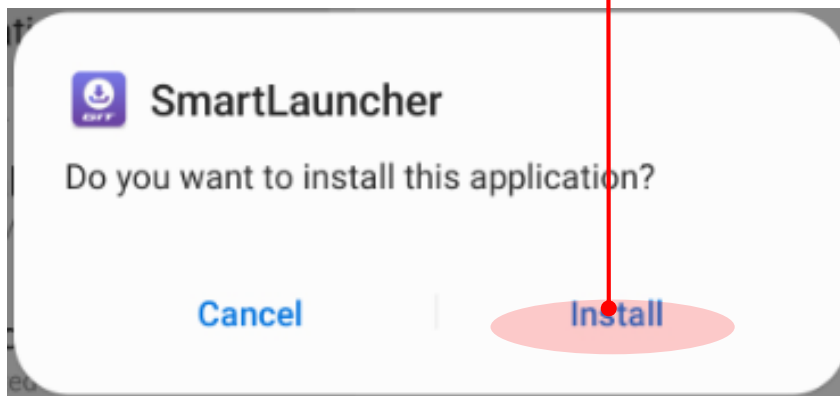
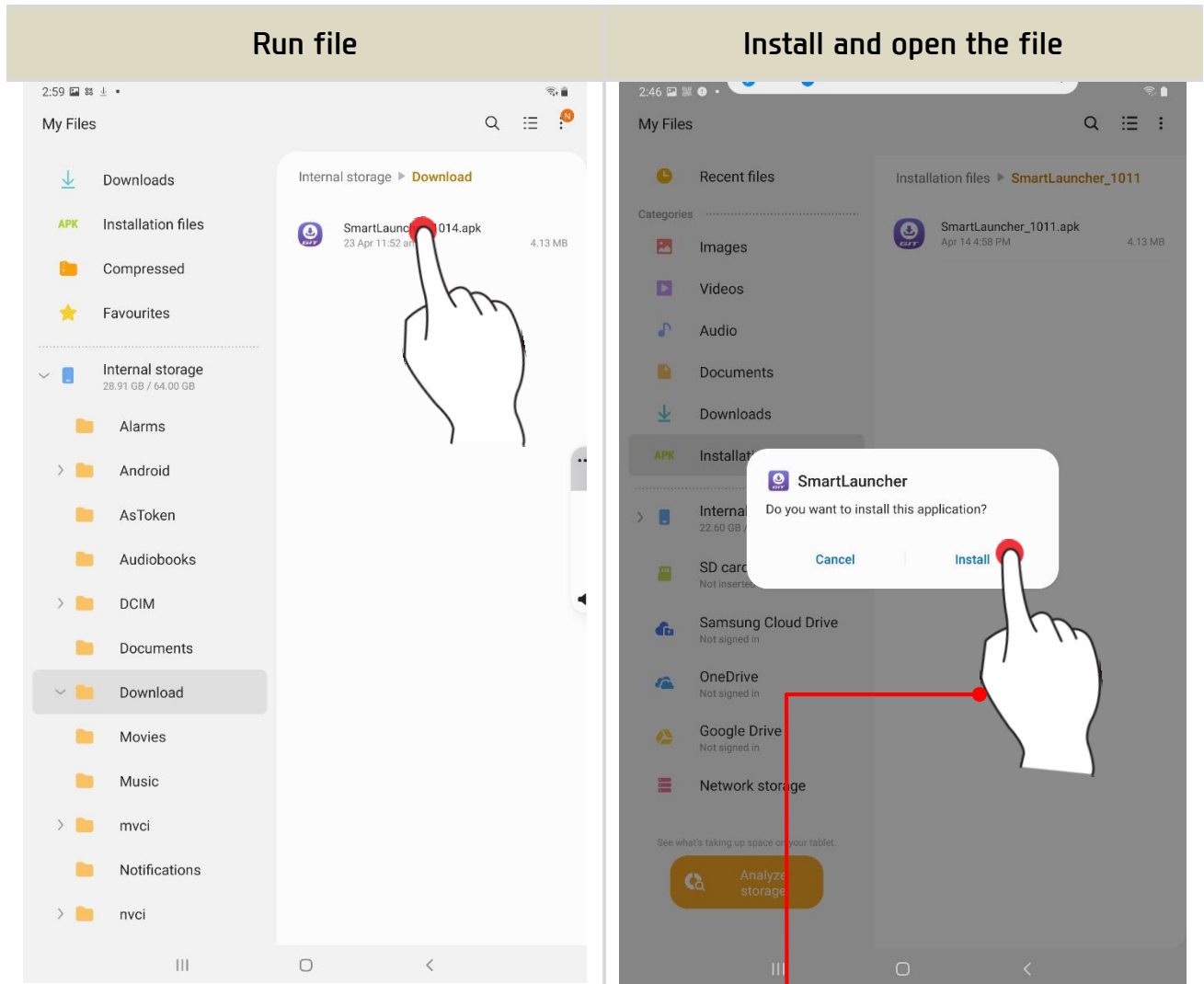


If you cannot find "SmartLauncher.apk"

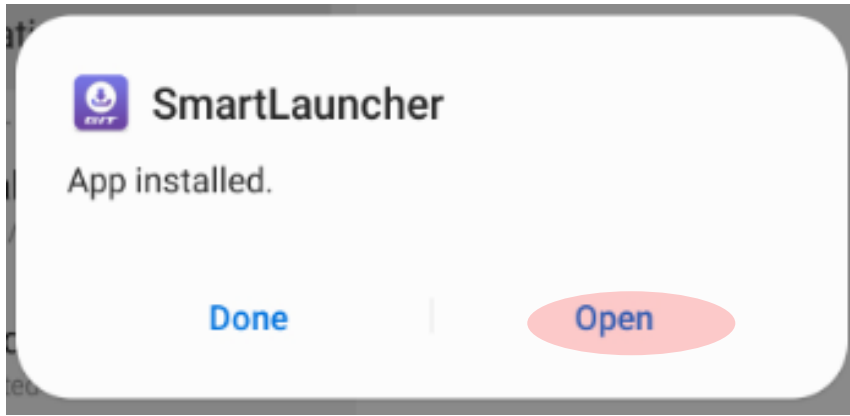
- Search in [Internal storage > Download] in Android "My Files" App

9. Run the SmartLauncher.apk file.

10. Run “Installation” and “Open”



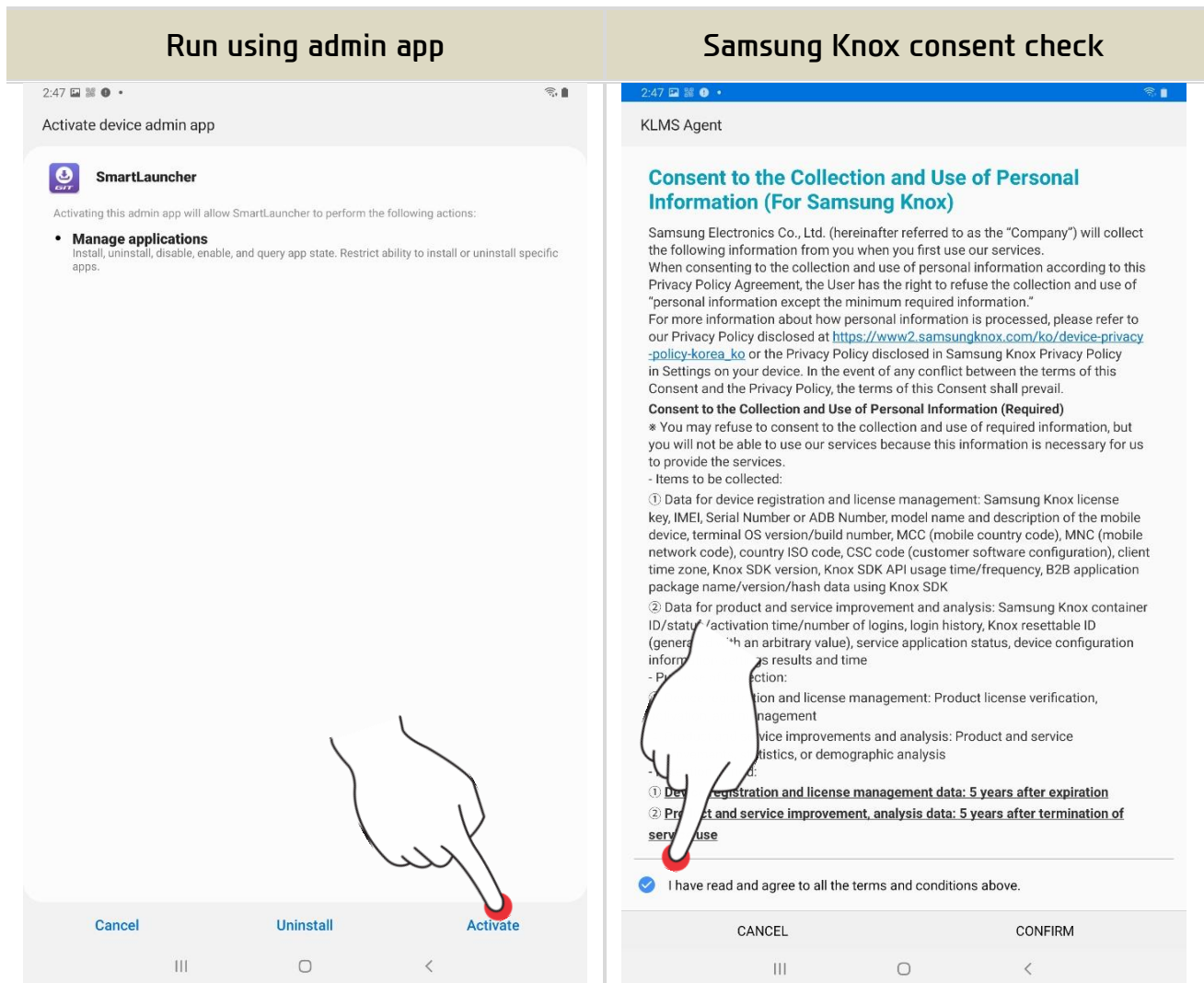
Install



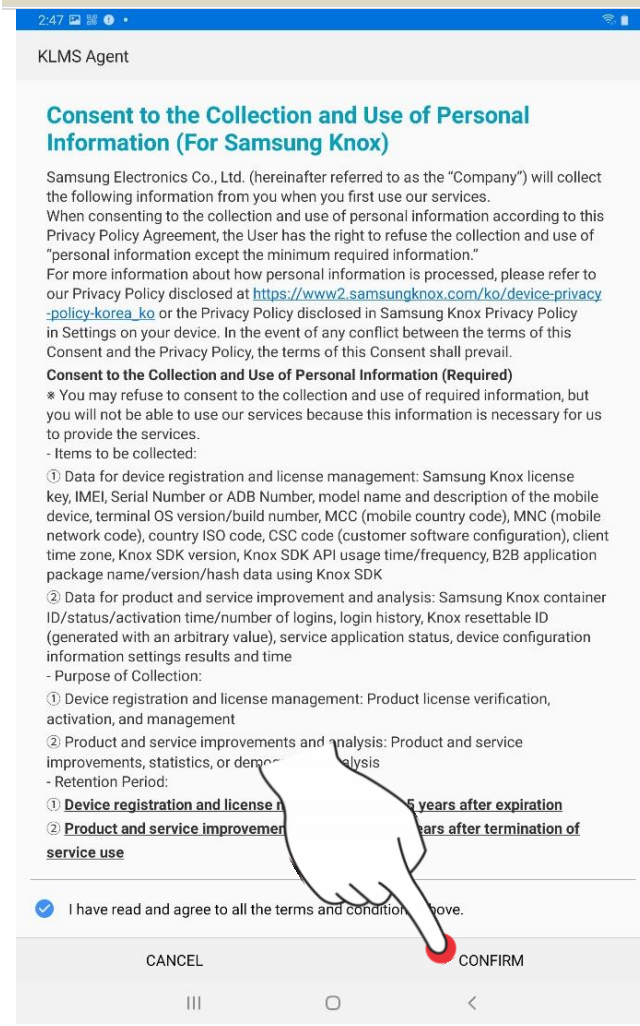
Open

11. “Activate” device admin app.

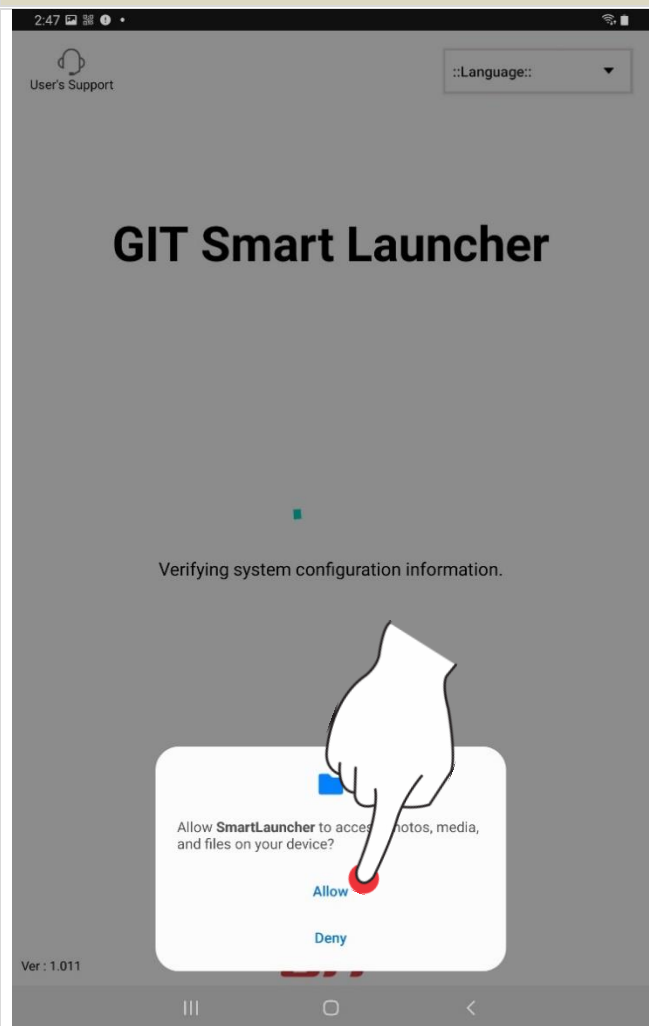
12. Set the permission to access the Smart Launcher app.



Click the CONFIRM button



Revoking App Access Permission



Smart launcher installation complete

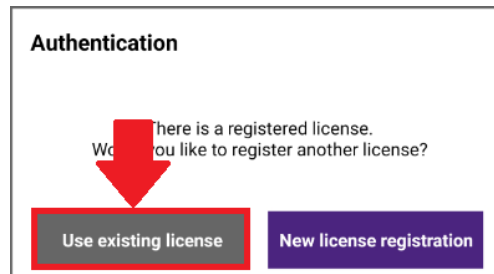
KDS 2.0 certification/installation

This is the step of product authentication, download, and installation with the smart launcher.



When you reinstall KDS 2.0

You will have the message below. Select [Use existing license]. Then, skip step 1 and go straight to step 2.



1. Enter the license key (16 digits of English + number combination) correctly. (Manufacturer and expiration date are set according to the license key.)

After license authentication is complete, enter login information and tablet serial information to proceed with the installation.

License Key Registration	Login and tablet serial input



User ID and Password

You can log in with KDS2.0 with KIA GSW account.

KIA Europe-General GSW (<https://www.kia-hotline.com>).

2. Select the installation method.
3. When the online download of the installation data is completed or the installation USB is connected, the installation proceeds automatically.

Select the installation method

The screenshot shows the 'Install' screen with the title 'Install' and the instruction 'Choose how to install diagnostic software.' There are two main options: 'Online Download' and 'Recovery via USB'. The 'Online Download' option is highlighted with a purple button and includes the text 'Download the installation data and proceed. Please stay online.' The 'Recovery via USB' option is also highlighted with a purple button and includes the text 'After connecting the recovery USB to the tablet, touch the button below.' There is a 'Close' button at the bottom and the 'GIT' logo at the bottom center.

Data download and installation

The screenshot shows the 'Online Download' progress screen with the title 'Install' and the instruction 'Downloading installation data. When the download is complete, the installation starts automatically.' Below this is a table with the following data:

Item	Version
Software	-00-0001
Resource	-00-0001
System	-00-0001
Support App	-00-0001

Below the table is a progress bar showing 2% completion. There are 'Cancel' and 'Close' buttons at the bottom. The 'GIT' logo is at the bottom center.

Perform “Online Download Installation” as a default. Installation using USB memory stick is only supported in some countries with inadequate Internet access.

Installation complete

After Installation is complete, please log in with your GSW TI account information to use the KDS 2.0 software.

If you have any questions about using the software, please refer to the user's manual.

