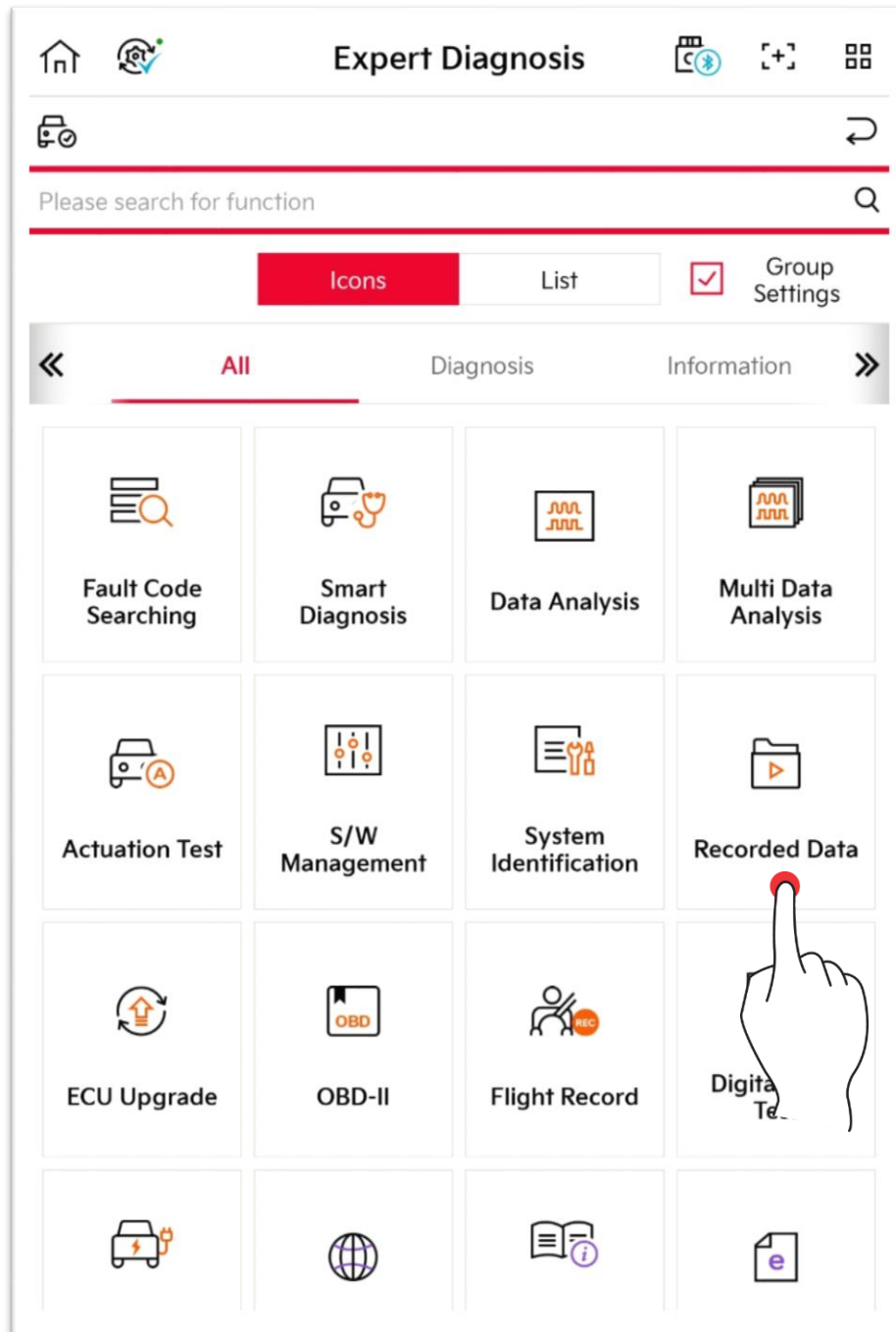


Expert Diagnosis - Recorded Data

You can view the data saved in tablet PC, and also copy the driving data saved in VCI II.



Basic Operation

The user can view, share or delete the data saved in tablet PC based on the user's need.

The screenshot shows the 'Recorded Data' application interface. At the top, there is a title bar with a back arrow, the text 'Recorded Data', and icons for a folder with an exclamation mark and a zoom-in symbol. Below the title bar, there is a navigation bar with 'Local' (highlighted in red) and 'Data Copy'. A breadcrumb path is displayed: '_UserData > Record > KIA > SPORTAGE(QL) > KNDPM3AC3N7005656'. Below this, there is a 'Recorded Data List' section. It features a list of records on the left and a corresponding 'File Name' column on the right. The records are: 'Record', 'KIA', '쏘울EV(SK3 EV)', 'KNAJ3811FL7005656', 'OPTIMA(TF_QF)', '5XXGM4A7XCG042569', 'SPORTAGE(QL)', and 'KNDPM3AC3N7005656' (highlighted in red). The 'File Name' column contains image filenames like 'Image_20220425_170358.png'. Annotations with blue lines point to specific UI elements: 'Spread/fold' points to a square icon with arrows; 'Share/delete' points to a square icon with a checkmark; and 'Open a saved data' points to an 'Open' button at the bottom.

Spread/fold

Share/delete

Open

Open a saved data

Record	File Name
KIA	Image_20220425_170358.png
쏘울EV(SK3 EV)	Image_20220425_170428.png
KNAJ3811FL7005656	Image_20220425_170436.png
OPTIMA(TF_QF)	Image_20220425_170450.png
5XXGM4A7XCG042569	Image_20220425_170458.png
SPORTAGE(QL)	
KNDPM3AC3N7005656	

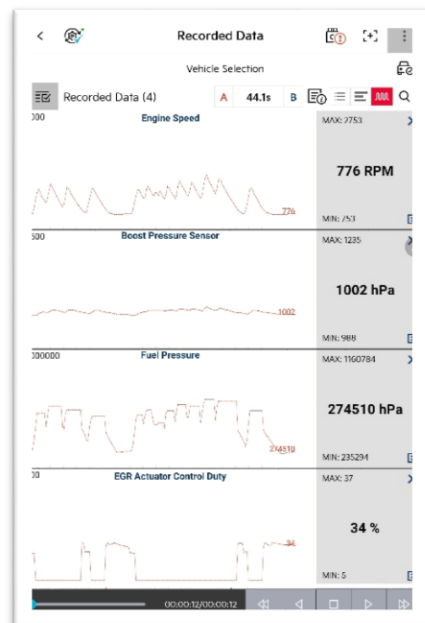
Open Files

Saved Data File (.GSR)

You can check the data in Text Mode and Graph Mode.

<input type="checkbox"/>	Sensor Name	Value	Unit	Link Up
<input type="checkbox"/>	Battery Voltage	17.4	V	
<input type="checkbox"/>	Battery Voltage after IG Key	17.4	V	
<input type="checkbox"/>	Actual Engine Speed	0	RPM	
<input type="checkbox"/>	Target Idle RPM	1650	RPM	
<input type="checkbox"/>	Pressure Sensor(MAP) Signal Voltage	0.0	V	
<input type="checkbox"/>	Intake Manifold Pressure	0.0	hPa	
<input type="checkbox"/>	Water Temperature Voltage	5.0	V	
<input type="checkbox"/>	Water Temperature	-39.8	C	
<input type="checkbox"/>	Ambient Air Temperature	-40.5	C	
<input type="checkbox"/>	Intake Air Temperature Voltage	5.0	V	
<input type="checkbox"/>	Intake Air Temperature	-40.5	C	
<input type="checkbox"/>	Engine Oil Temperature	-39.8	C	
<input type="checkbox"/>	Fuel Level(Optional)	100	%	
<input type="checkbox"/>	Fuel Tank Pressure Value(Optional)	40.0	hPa	
<input type="checkbox"/>	O2 Sensor Binary Type Bank1 Downstream(Optional)	0.0	V	
<input type="checkbox"/>	O2 Sensor Binary Type Bank2 Downstream(Optional)	0.0	V	
<input type="checkbox"/>	O2 Sensor Linear Type Bank1 Upstream(Optional)	2.0	V	
<input type="checkbox"/>	O2 Sensor Linear Type Bank2 Upstream(Optional)	2.0	V	
<input type="checkbox"/>	Vehicle Speed	0.0	km/h	
<input type="checkbox"/>	Relative Charge Value	0.0	%	

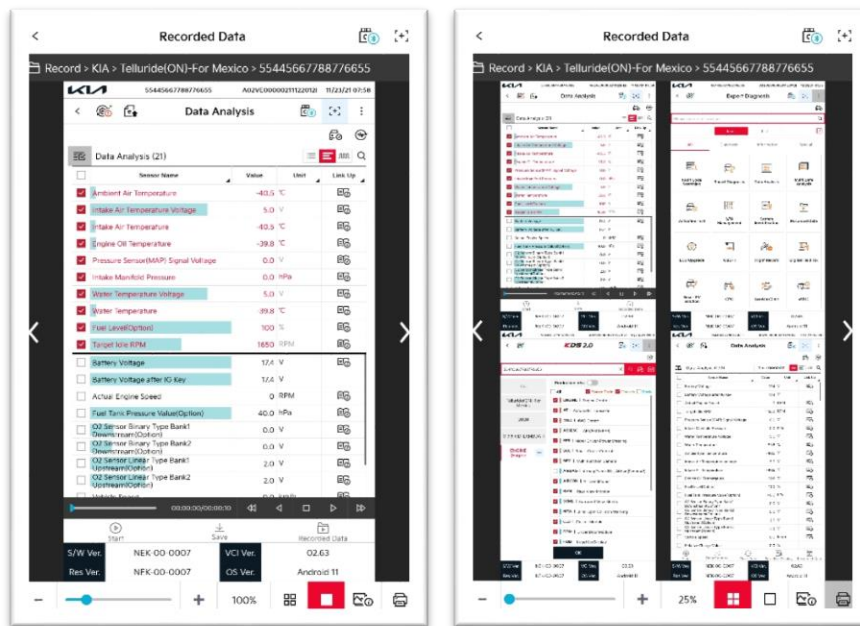
<Text Mode>



<Graph Mode>

Image Files

You can check the image files that are saved.



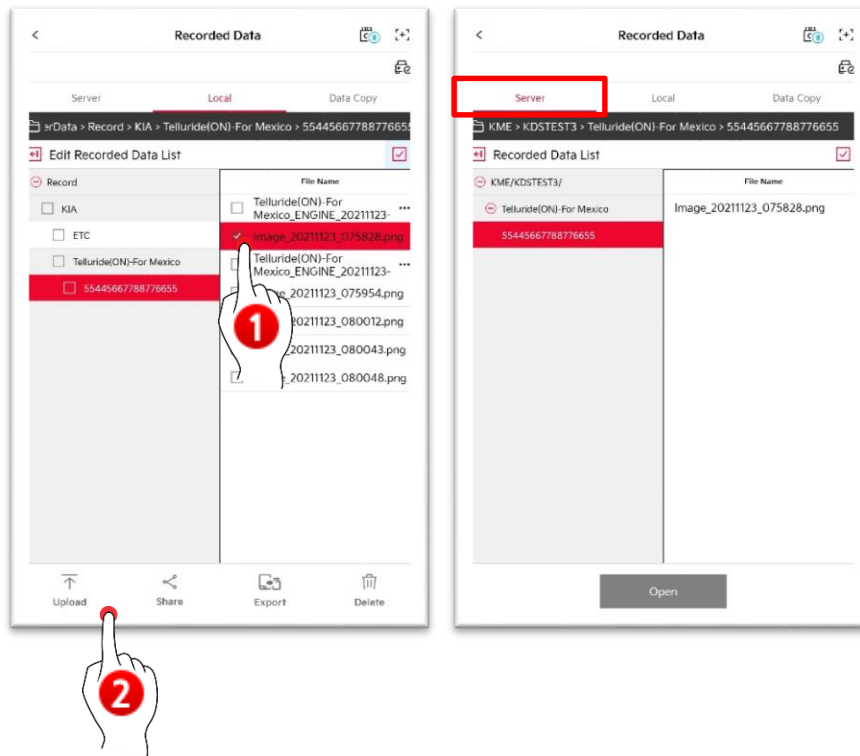
	Maximize/minimize
	View one image page
	View multiple image pages (maximum of 4 pages)
	Detailed information of images
	Print

Upload, Data Sharing, Export and Delete

Upload

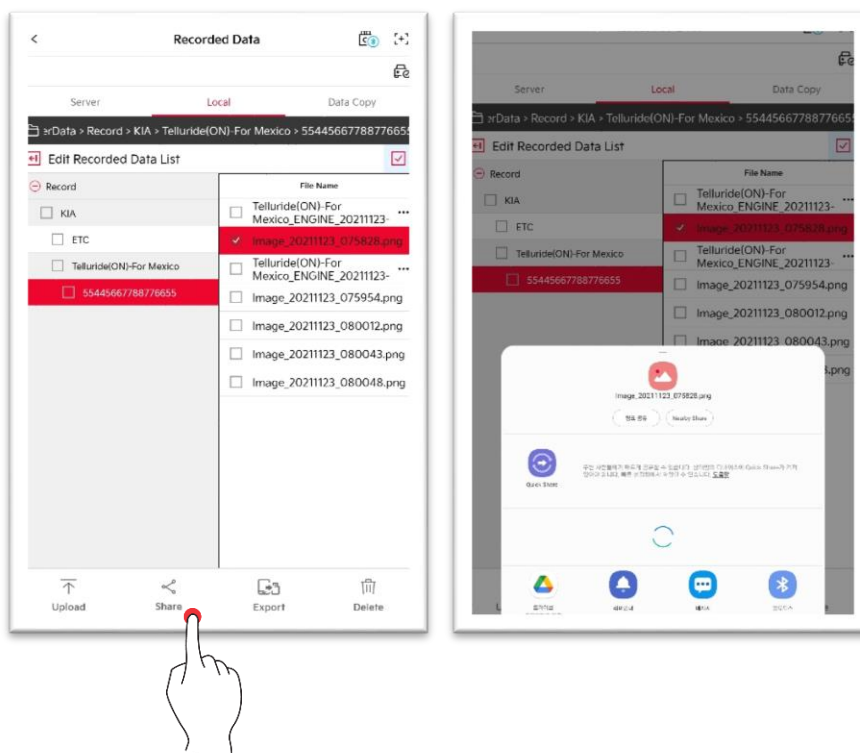
You can upload the selected image to the server.

*Uploaded data can be checked in the 'Server' tab when logging in from another tablet.



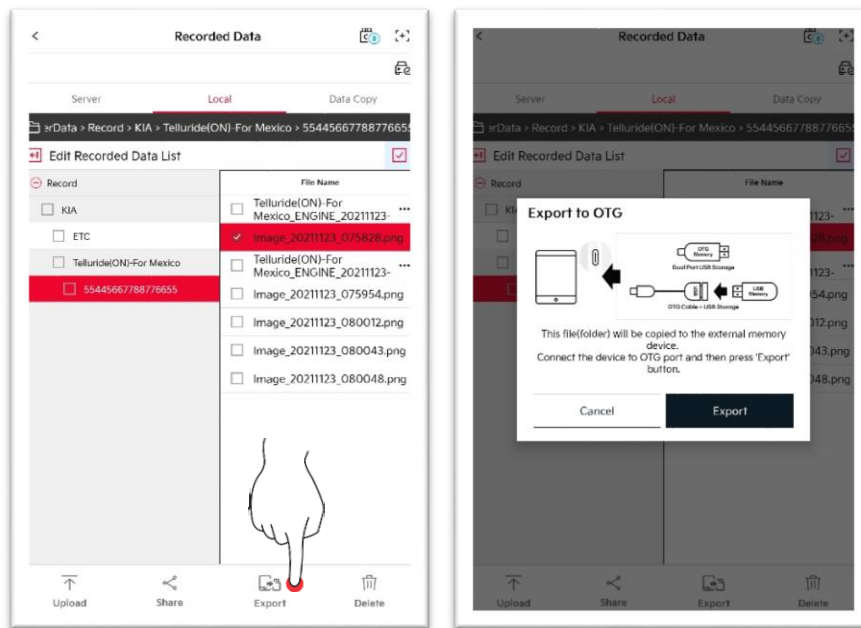
Sharing

You can share the data by using various methods supported by your tablet.



Export

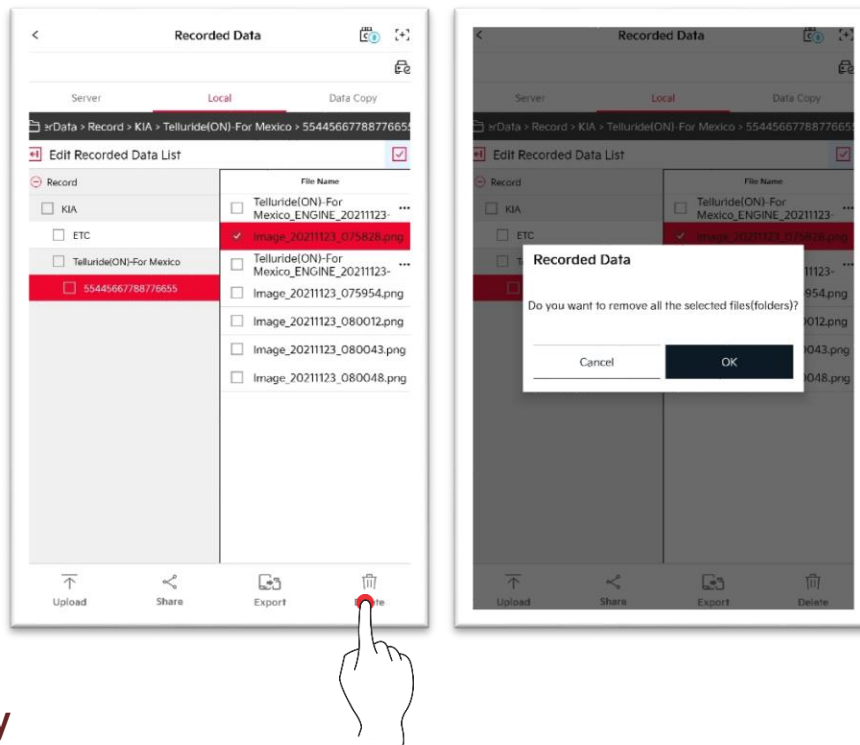
You can export the data through an external saving device.



※ For exporting the data to USB or SD card, please refer to the following guide.

Delete

You can delete the data via Delete button.



Data Copy

You can copy and paste the data files saved in VCI to your tablet PC.
Select a data to copy, and touch 'Data Copy' button.

※ It is saved in the file path of KDS2_UserData/Record of internal storage device.

