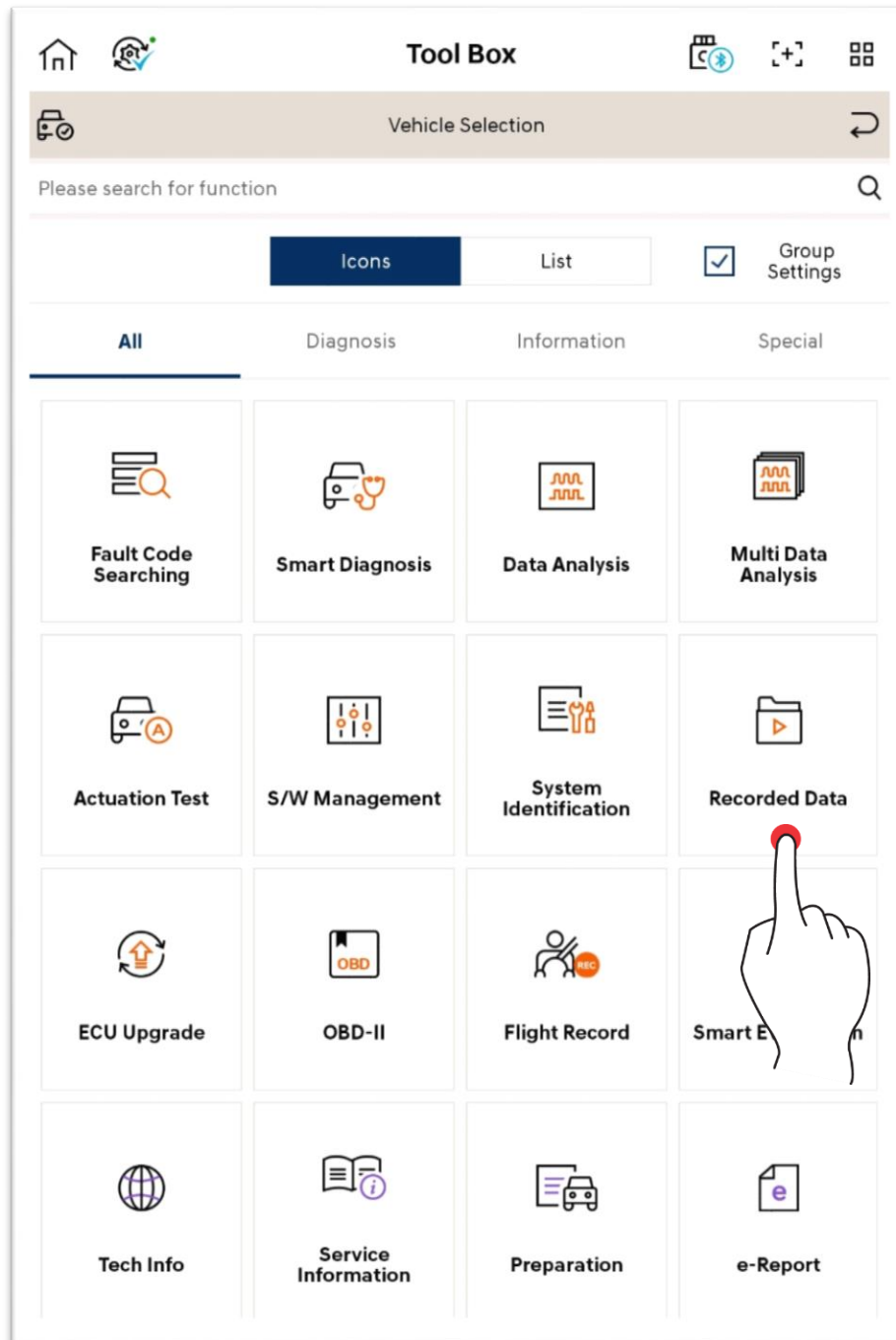


Tool Box – Recorded Data

You can view the data saved in tablet PC, and also copy the driving data saved in VCI II.



Basic Operation

The user can view, share or delete the data saved in tablet PC based on the user's need.

The screenshot displays the 'Recorded Data' application interface. At the top, there is a navigation bar with a back arrow, the title 'Recorded Data', and icons for a folder and a plus sign. Below the navigation bar, there are two tabs: 'Local' and 'Data Copy'. The 'Local' tab is selected, showing a file path: 'NvciData > Record > HYUNDAI > ELANTRA(AD) > 12345789012345678'. Below the file path, there is a 'Recorded Data List' section. This section contains a table with two columns: 'Record' and 'File Name'. The 'Record' column has a tree view with 'Record', 'HYUNDAI', and 'ELANTRA(AD)' expanded, showing the file '12345789012345678'. The 'File Name' column lists several image files. Annotations with blue lines point to specific elements: 'Spread/fol' points to the folder icon in the 'Recorded Data List' header; 'Share/delete' points to the checkmark icon in the top right corner; and 'Open a saved data' points to the 'Open' button at the bottom.

Record	File Name
Record	
HYUNDAI	ELANTRA(AD)_ENGINE_20211117-143116.GSR
ELANTRA(AD)	ELANTRA(AD)_ENGINE_20211117-143123.GSR
12345789012345678	Image_20211117_143644.png
	Image_20211117_143649.png
	Image_20211117_143655.png
	Image_20211117_143703.png
	Image_20211117_143708.png
	Image_20211117_143711.png

Spread/fol

Share/delete

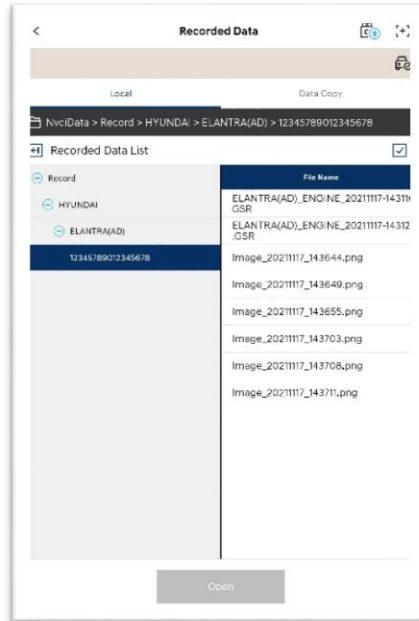
Open

Open a saved data

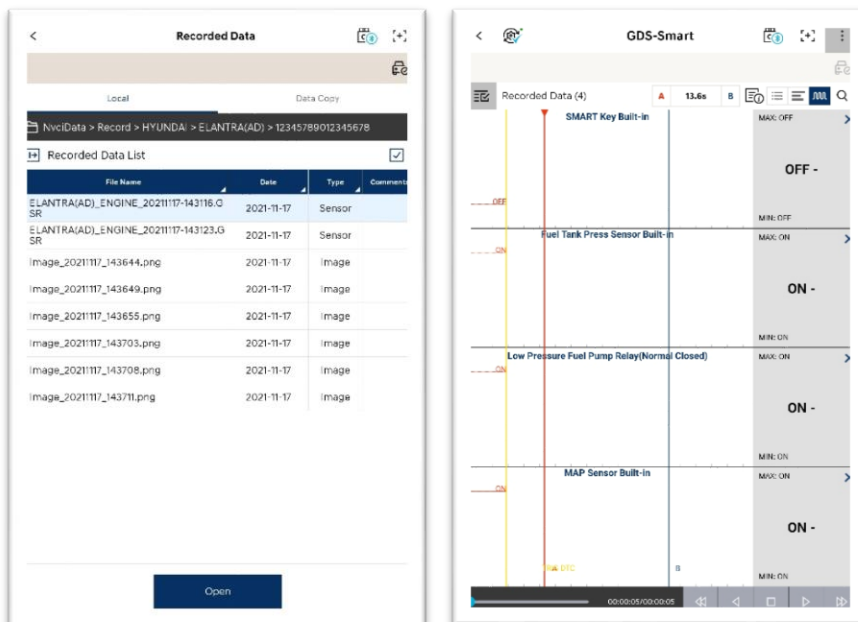
Open Files

Saved Data File (.GSR)

You can check the data in Text Mode and Graph Mode.



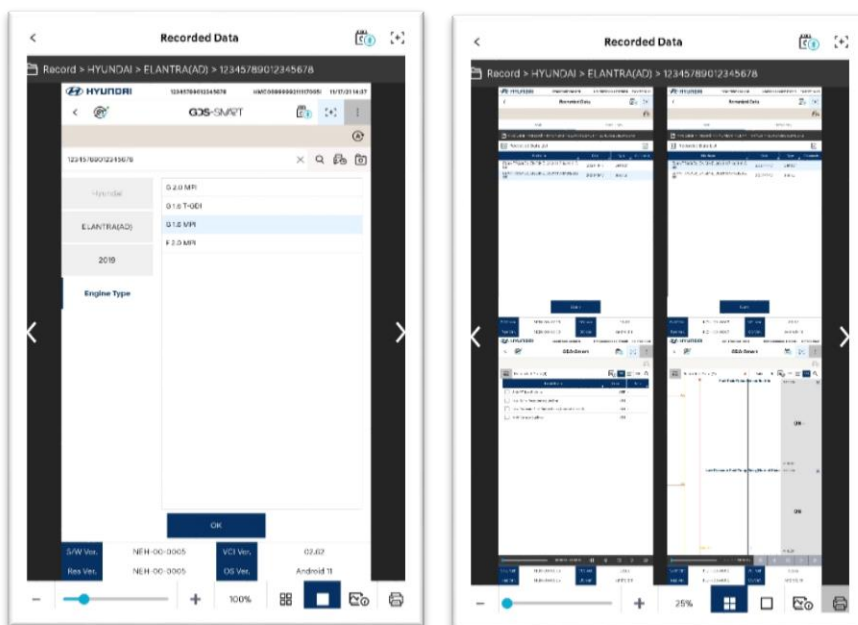
<Text Mode>



<Graph Mode>

Image Files

You can check the image files that are saved.

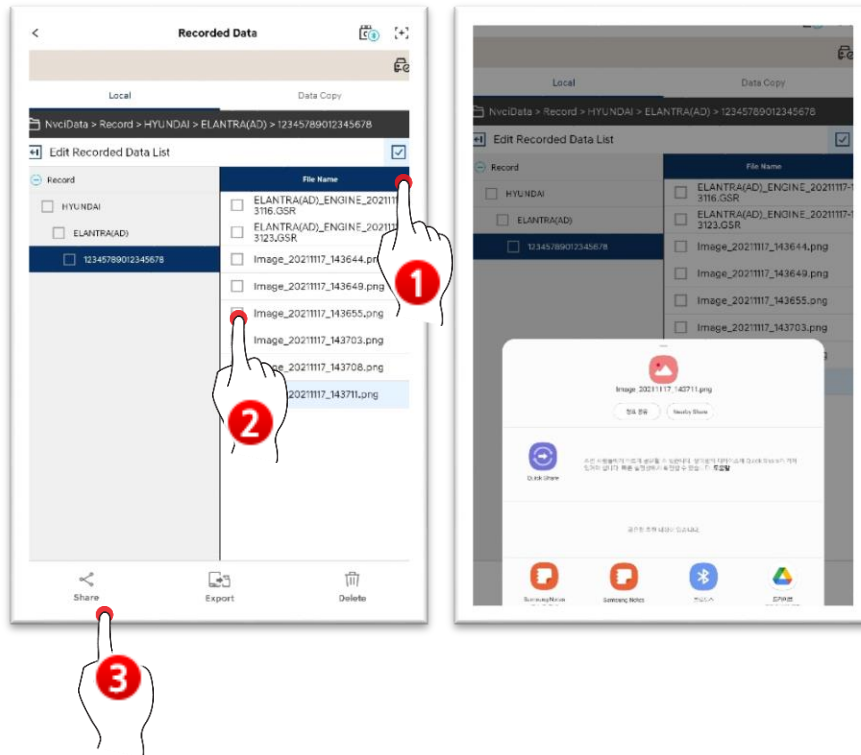


	Maximize/minimize
	View one image page
	View multiple image pages (maximum of 4 pages)
	Detailed information of images
	Print

Sharing, Export and Delete

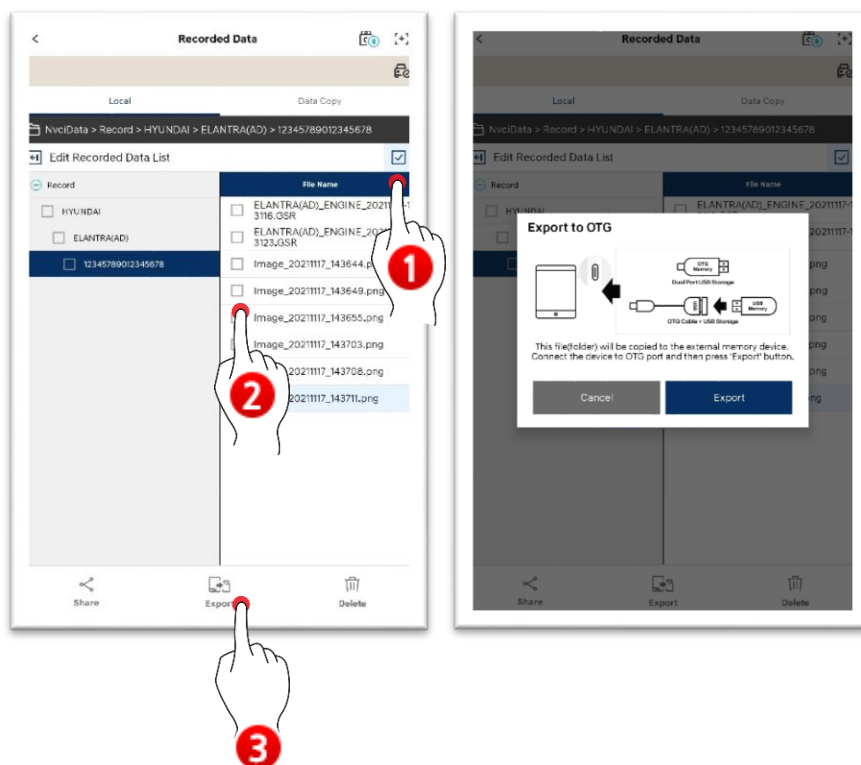
Sharing

You can share the data by using various methods supported by your tablet.



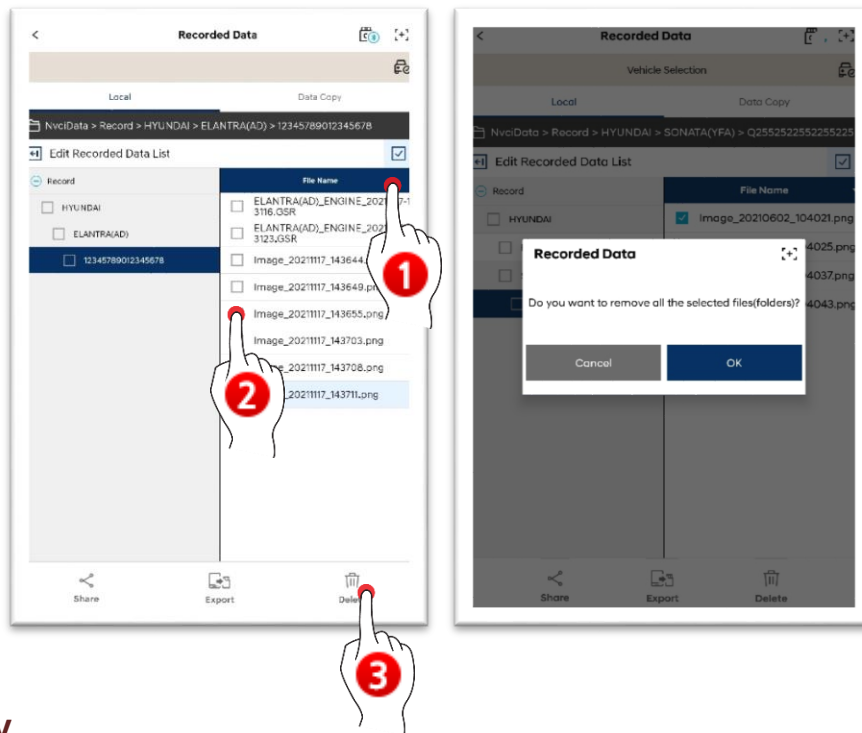
Export

You can export the data through an external saving device.



Delete

You can delete the data via Delete button.



Data Copy

You can copy and paste the data files saved in VCI to your tablet PC.

Select a data to copy, and touch 'Data Copy' button.

※ It is saved in the file path of NvcData/Record of internal storage device.

