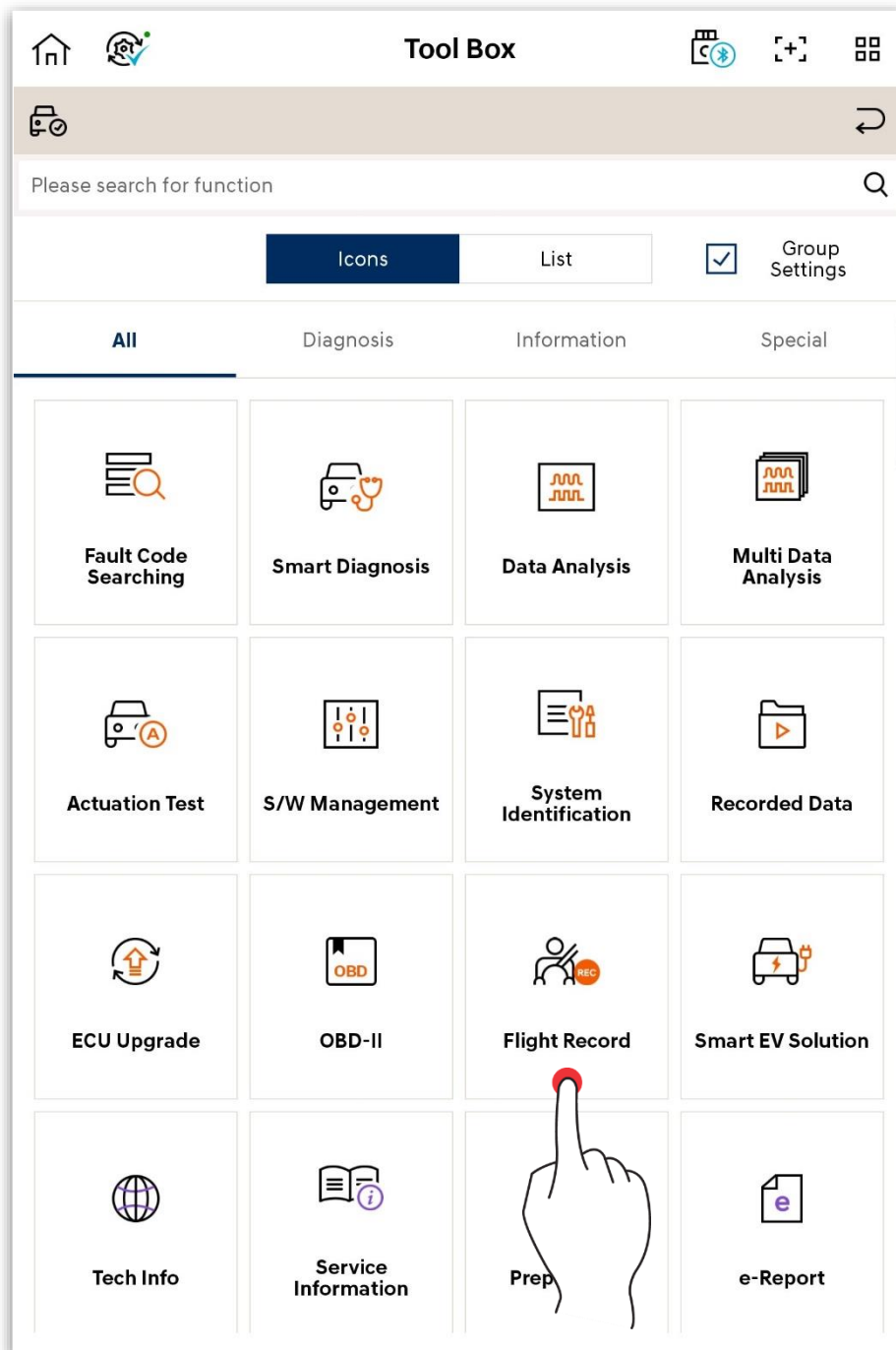


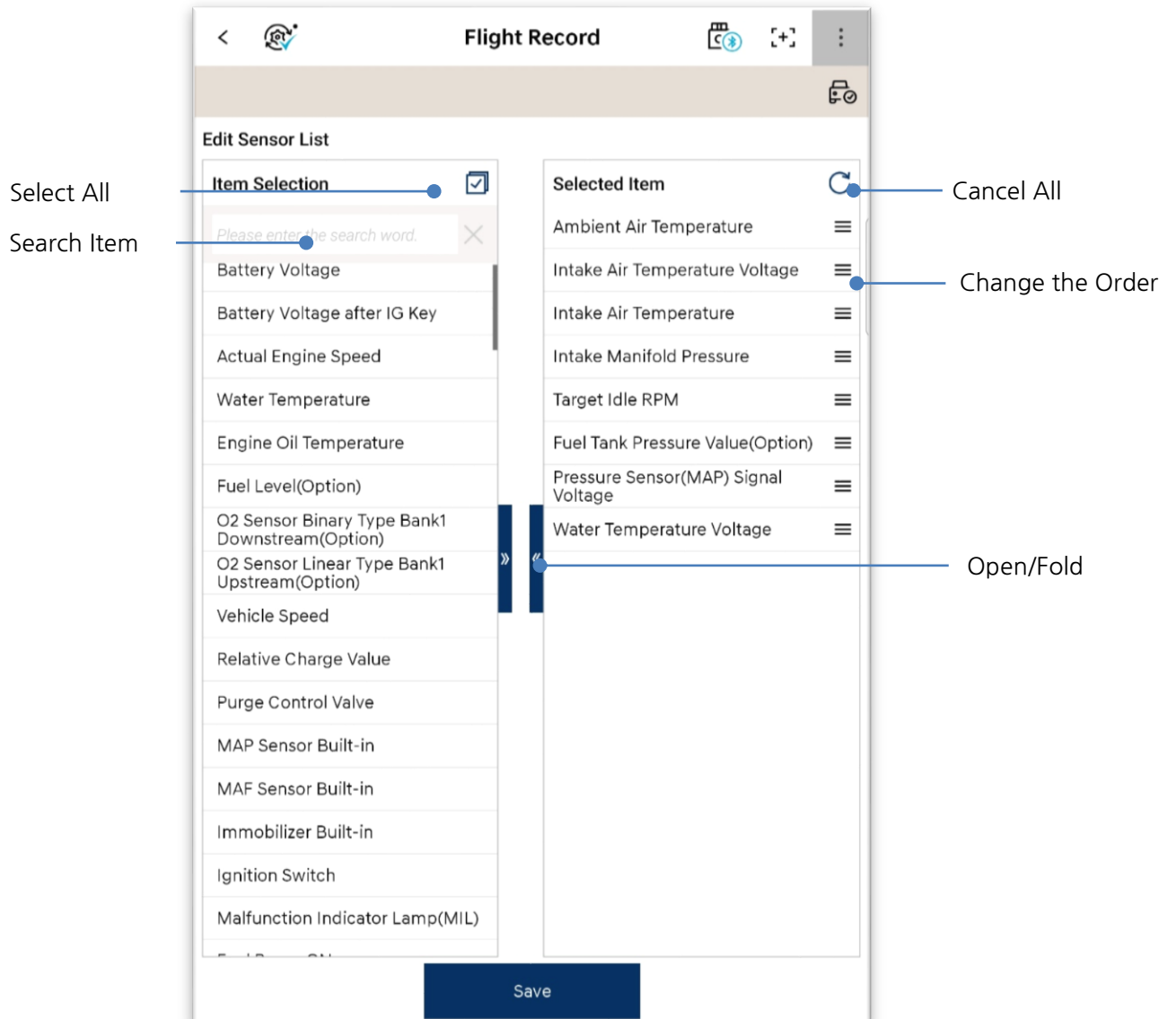
Tool Box – Flight Record

This is the function to record the data output while driving vehicles.



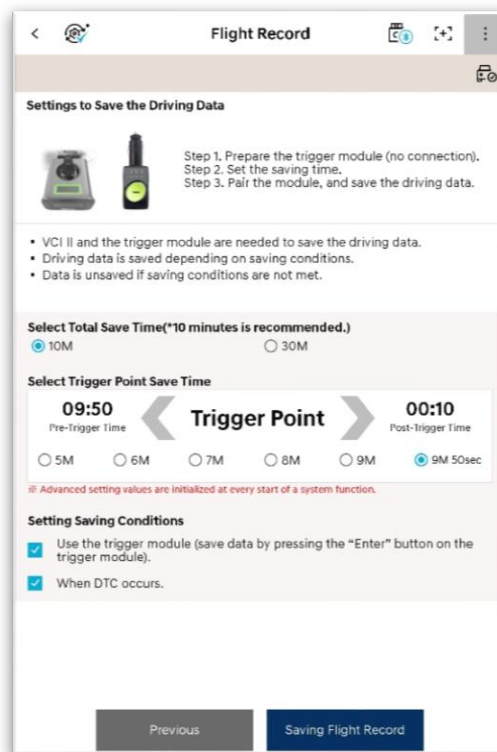
Item Selection

Please select the item of the system sensor which you want to record.



Setting for Driving Data Record

Please set the condition for driving data record.



The screenshot shows the 'Flight Record' app interface. At the top, there's a title bar with a back arrow, a logo, the title 'Flight Record', and icons for settings, zoom, and a menu. Below the title bar is a section titled 'Settings to Save the Driving Data'. It includes an illustration of a VCI II module and a trigger module, followed by three steps: 'Step 1. Prepare the trigger module (no connection).', 'Step 2. Set the saving time.', and 'Step 3. Pair the module, and save the driving data.' Below this, there are three bullet points: 'VCI II and the trigger module are needed to save the driving data.', 'Driving data is saved depending on saving conditions.', and 'Data is unsaved if saving conditions are not met.' The next section is 'Select Total Save Time(*10 minutes is recommended.)' with two radio buttons: '10M' (selected) and '30M'. Below that is 'Select Trigger Point Save Time' with a central 'Trigger Point' label and arrows pointing to 'Pre-Trigger Time' (09:50) and 'Post-Trigger Time' (00:10). Under 'Pre-Trigger Time', there are radio buttons for 5M, 6M, 7M, 8M, 9M, and 9M 50sec (selected). Under 'Post-Trigger Time', there are radio buttons for 5M, 6M, 7M, 8M, 9M, and 9M 50sec (selected). A small red note states: '* Advanced setting values are initialized at every start of a system function.' The final section is 'Setting Saving Conditions' with two checked checkboxes: 'Use the trigger module (save data by pressing the "Enter" button on the trigger module).' and 'When DTC occurs.' At the bottom, there are two buttons: 'Previous' and 'Saving Flight Record'.

! Tip

Conditions for Pairing VCI II and Trigger Module

- Pairing between VCI II module and tablet
- Not connecting trigger module to cigar power

Setting Record Time Before/After Trigger

- Ex) If you set 10 seconds before/after Trigger, it records 10 seconds before/after occurrence of fault code or before/after pressing the 'Enter' button of trigger module.

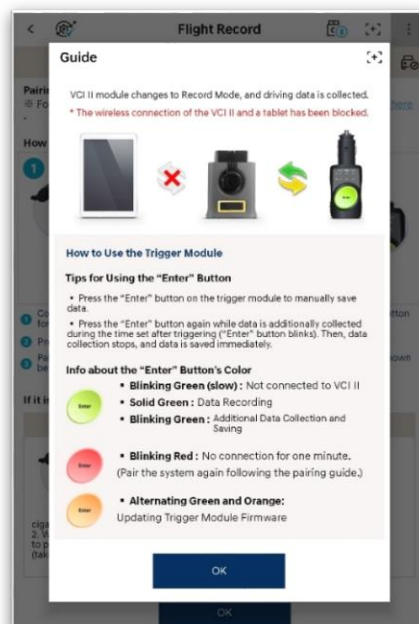
Pairing between Trigger Module ↔ VCI II

Please refer to the picture below to proceed the pairing.



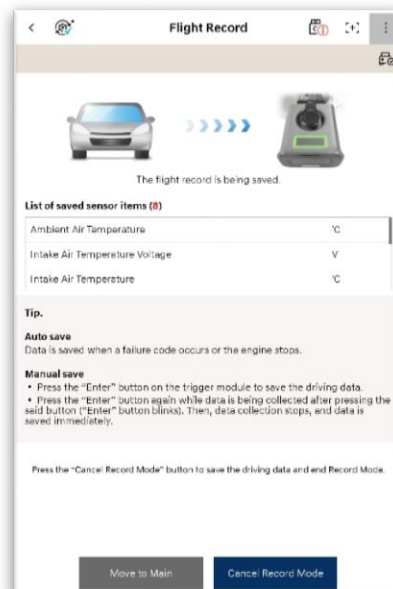
Tip

Please refer to the picture below for the information of colors and how to use the trigger module.



Driving Data Record

When the green light comes on the 'Enter' button of trigger module, it means the setting for Driving Data Record is complete. Please check the information how to use the trigger module before you drive your vehicle.



Deactivate Record Mode

You can deactivate Record Mode of VCI II and analyze the recorded driving data after you copy it to the tablet.

