

KDS 2.0

KDS 2.0 Installation Guide

Please follow the steps on this guide for a successful Kia KDS 2.0 diagnostic software installation.

- If KDS 1.0 is currently installed, it will be automatically removed during the KDS 2.0 installation.

Note:

During the installation, all saved data including Freeze Frame Data will be permanently deleted.

Smart Launcher Download



Scan to download Smart Launcher
to start KDS 2.0 installation

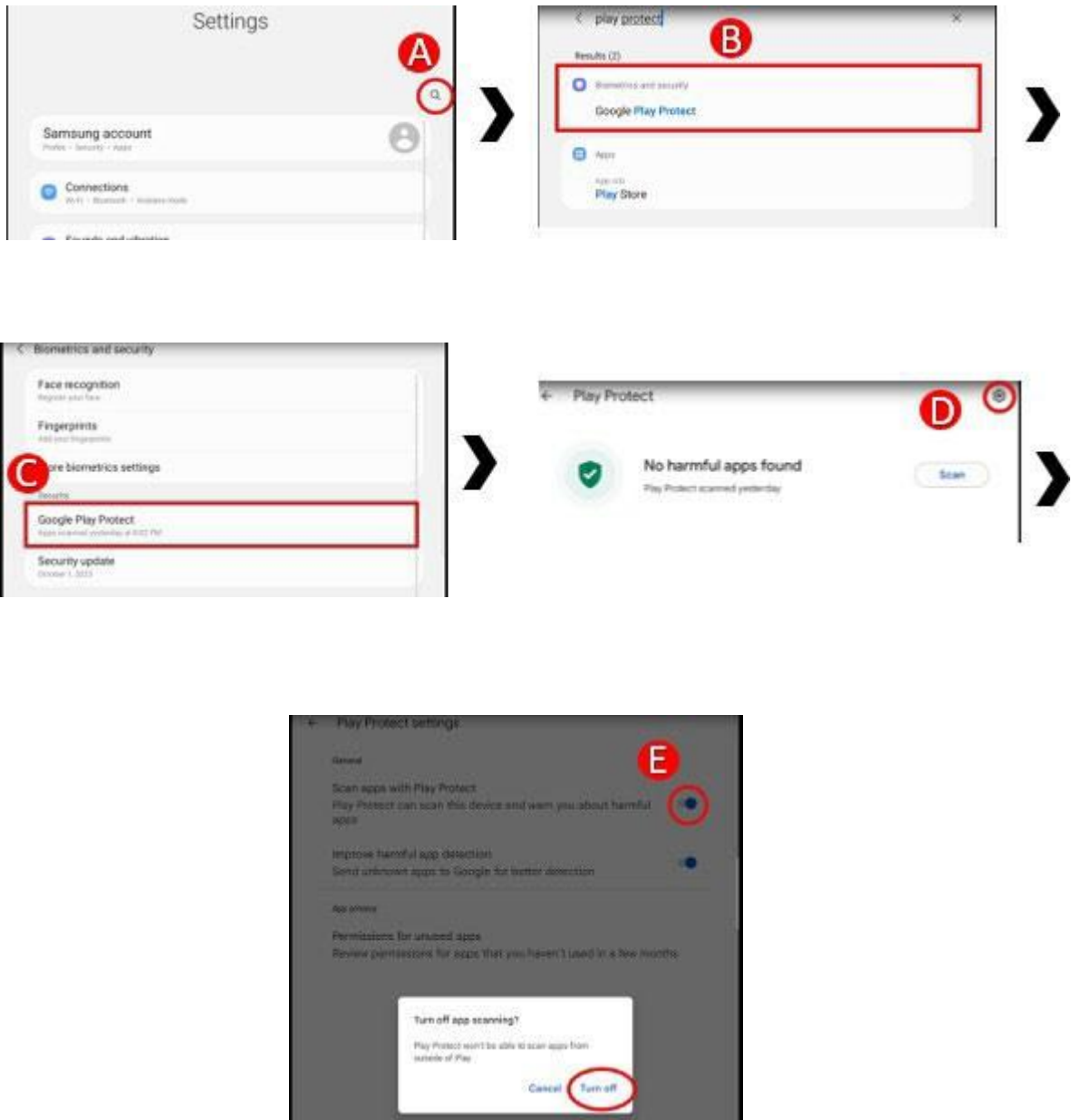
KDS 2.0 Installation Guide



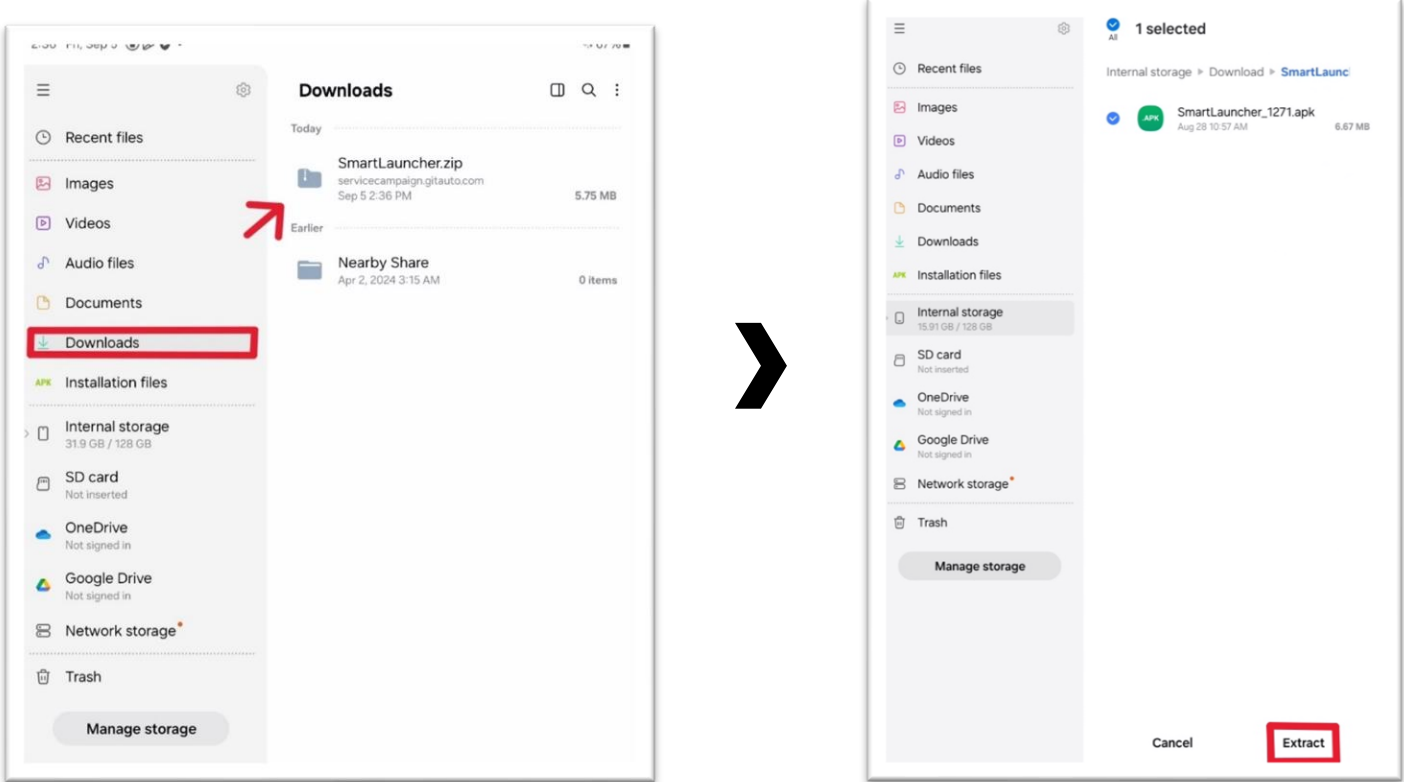
Scan to view Installation Guide (PDF)

KDS 2.0 Installation Process

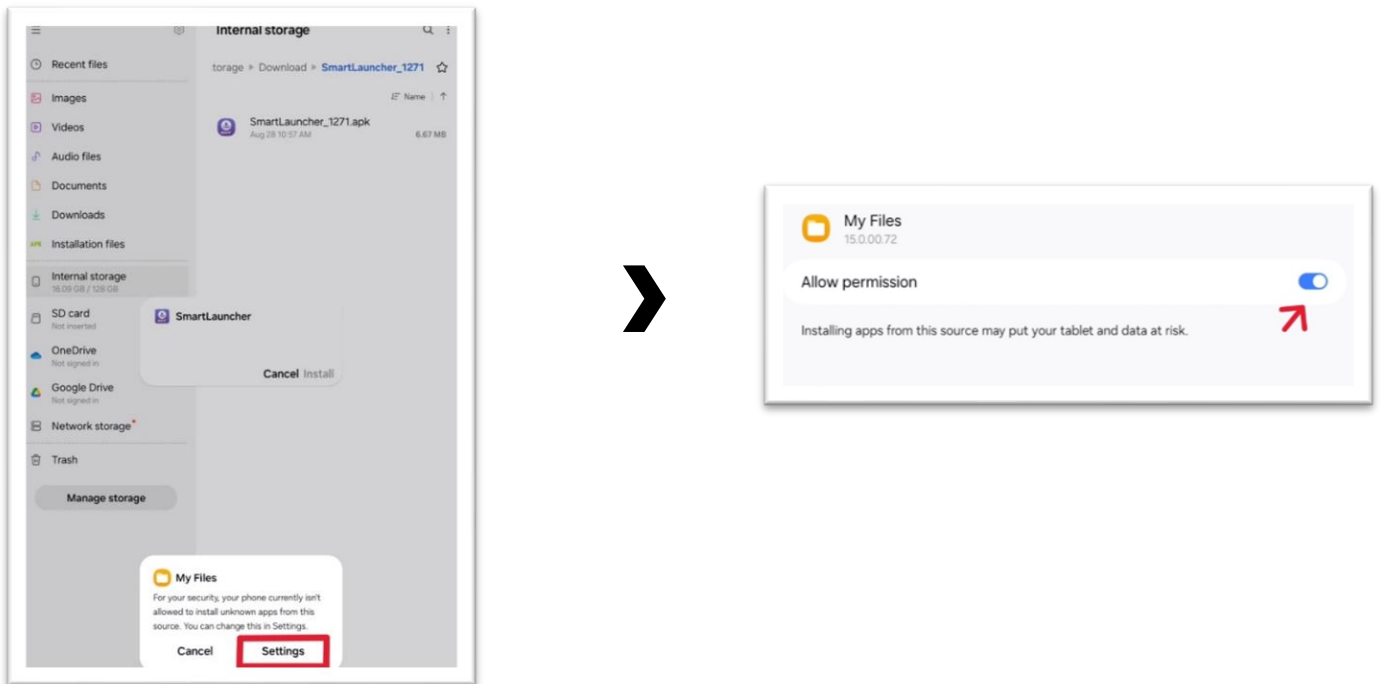
1. Before starting, go to tablet 'settings', search for 'play protect'(A), under results select 'Google play protect'(B), under security select 'Google Play Protect', click on settings icon on top right of the screen(D), turn off the 'Scan apps with Play Protect' feature(E) then click 'Turn off' on the pop-up message.



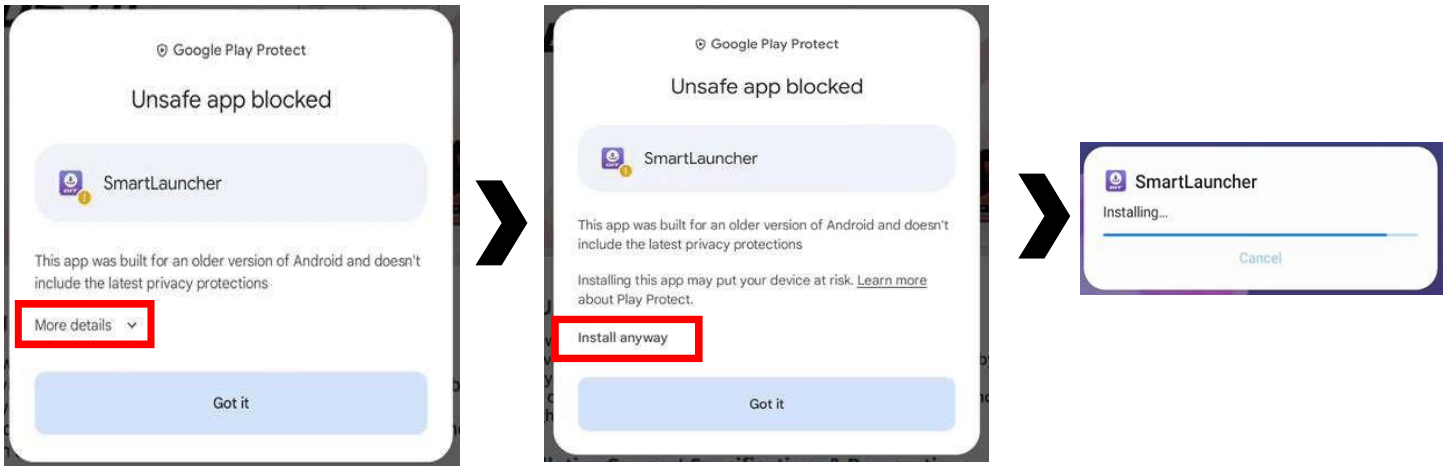
2. After downloading the Smart Launcher via the QR code or the Provided link, click **“Settings”** and then select the **“Download”** tab. You will see a compressed file named **“Smartlauncher.zip”**. Click on the file and press the **“Extract”** button to unzip the file.



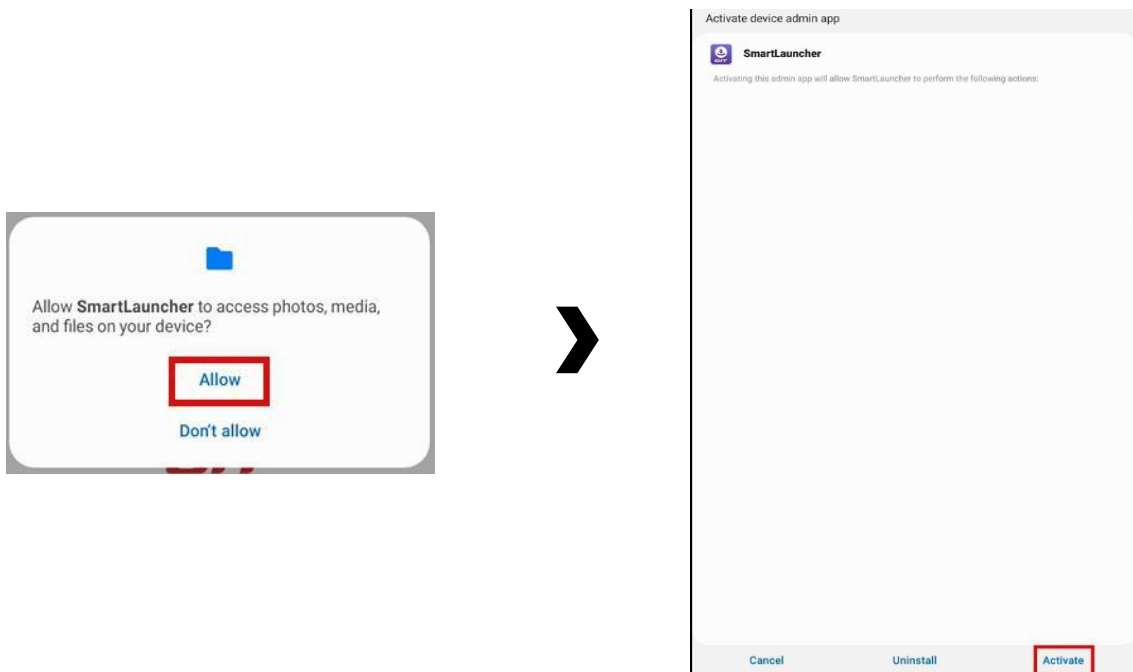
3. After clicking the **“Extract”**, A pop-up message will appear in **“My Files”**. Click on **“Settings”**, turn **ON “Allow Permission”**.



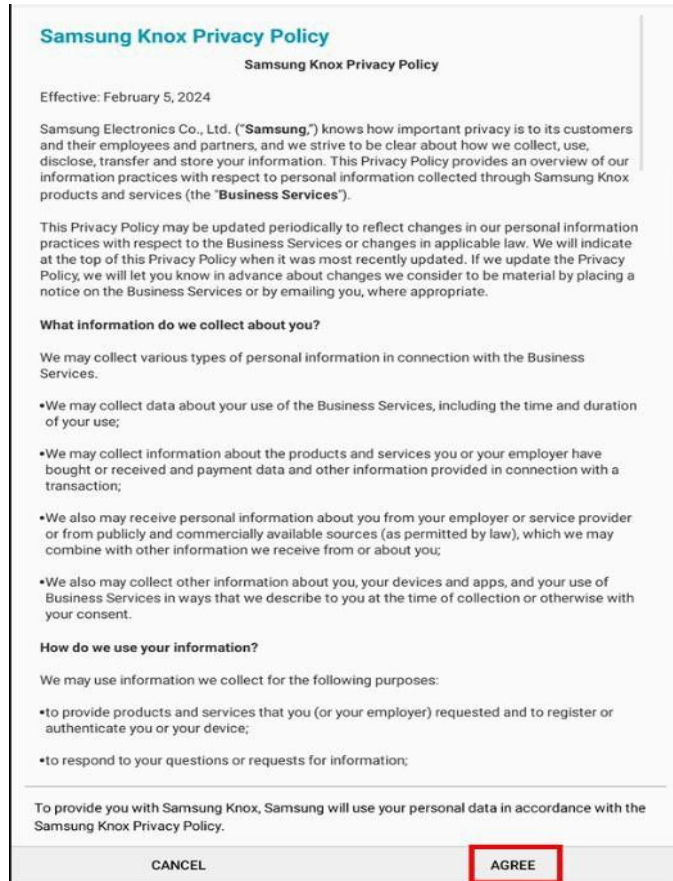
4. Play Protect message will appear press **“More details”** > **“Install Anyways”**, Smart Launcher will then finish installing.



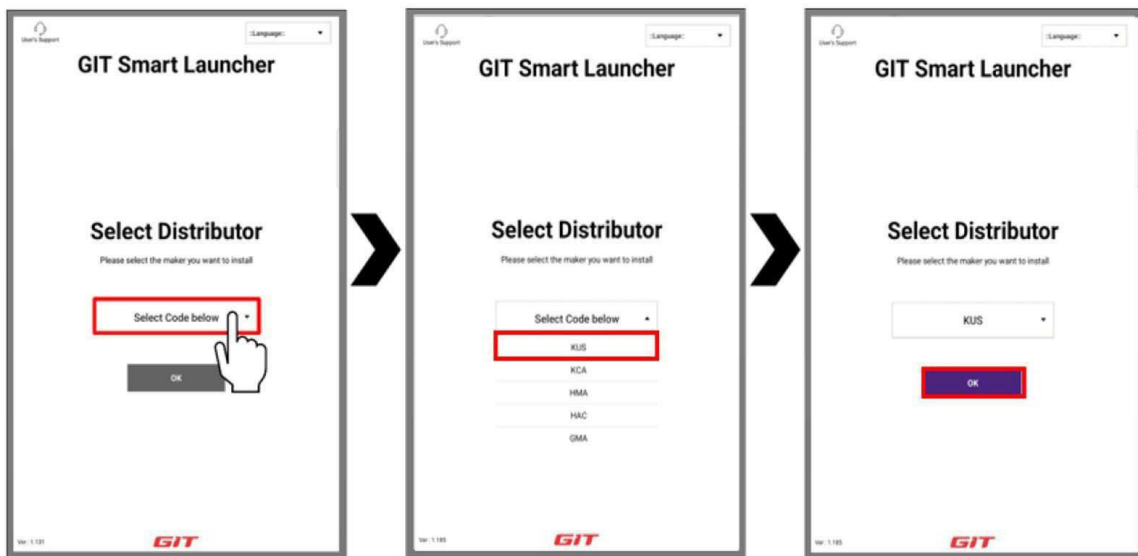
5. GIT Smart Launcher will begin, two Smart Launcher pop-up messages will appear, select **“Allow”** > select **“Activate”**.



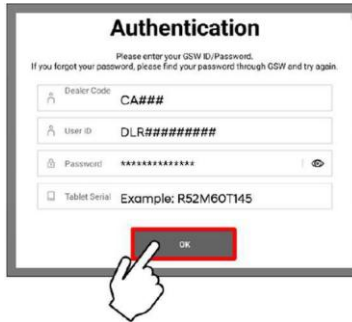
6. User must agree to Samsung Knox U.S. Privacy Policy. Select **“Agree”** to proceed.



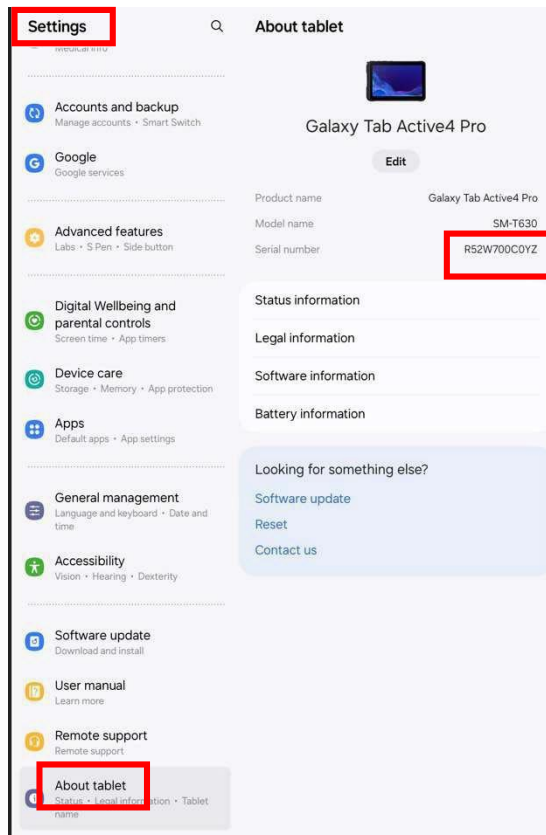
7. Select **“KUS”** from the drop-down list as the Distributor, Select **“OK”** to proceed.



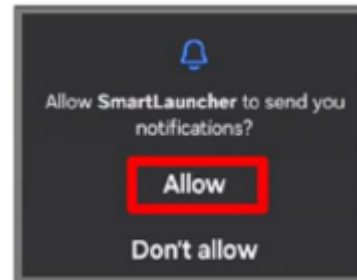
8. Enter Authentication information. Enter the login credentials for After-Market (Dealer Code, User ID, Password). Enter the tablet serial number, select “OK” to proceed.



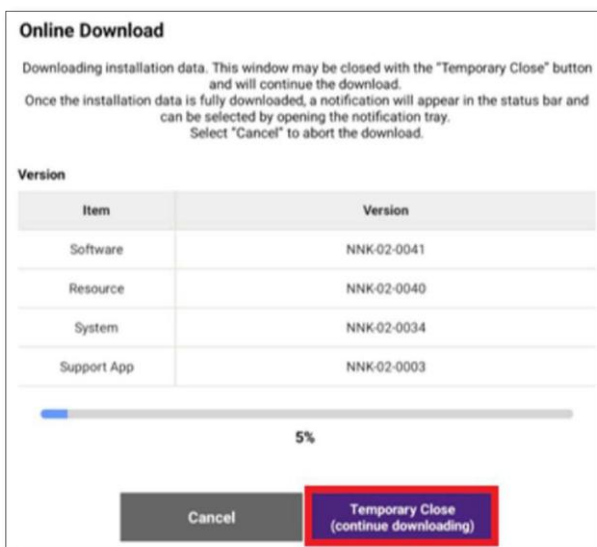
NOTE: Tablet Serial Number can be found under ‘Settings’ > ‘About Tablet’, press and hold the serial number to copy to clipboard, go back to Authentication screen, press and hold on tablet Serial to paste Serial number



9. Select **“Online Download”** and **“Allow”** Smart Launcher notifications.



10. Online Download will begin to run in the background, select **“Temporary Close”**. You will be able to continue to use KDS while downloading the installation files.”



NOTE: A tablet that drops below 30% battery life or is turned off during this process will auto close and require these initial steps to be performed again.

11. Once the download is complete, you will receive a notification **on the status bar**. You can now use your recent apps tab to return to the download and select **“Install”** and **“Yes”** when ready.

Online Download

Downloading installation data. This window may be closed with the “Temporary Close” button and will continue the download.
Once the installation data is fully downloaded, a notification will appear in the status bar and can be selected by opening the notification tray.
Select “Cancel” to abort the download.

Version

Item	Version
Software	NNK-02-0078
Resource	NNK-02-0068
System	NNK-02-0058
Support App	NNK-02-0006

100%

[Attention!] Pop-up message may appear during installation. Please monitor the installation screen after selecting install button below

Install Later **Install Now**

NOTE:
Do not leave the tablet unattended. Installation will require app confirmation of permissions for KDS 2.0. Failure to make selections promptly, within 5 minutes or less, may result in a corrupted file installation.

Program Installation Guidance

Resolution for App Installation Blocking

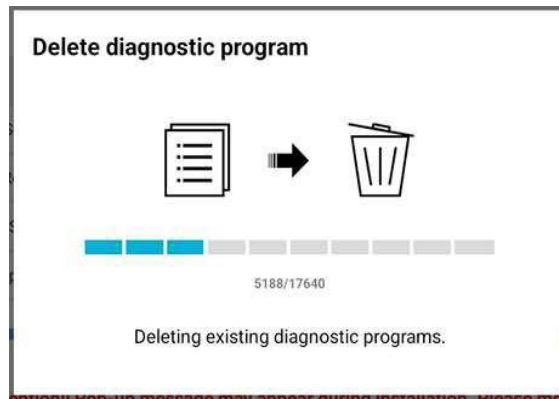
* When displaying the information pop-up regarding blocking the diagnostic software app on the Android OS, please make sure to choose **'Install anyway'**.
(When it comes to the guide pop-up, It may differ based on the Android OS version.)

Would you like to proceed with the installation?

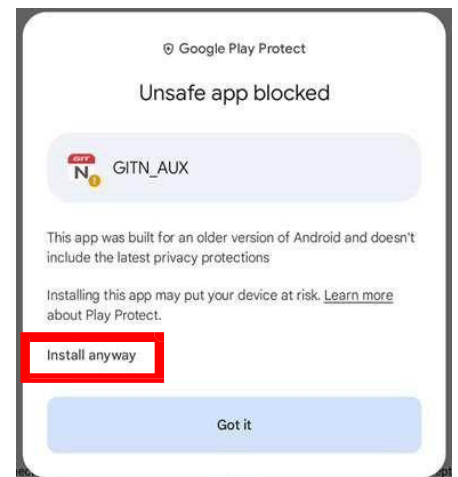
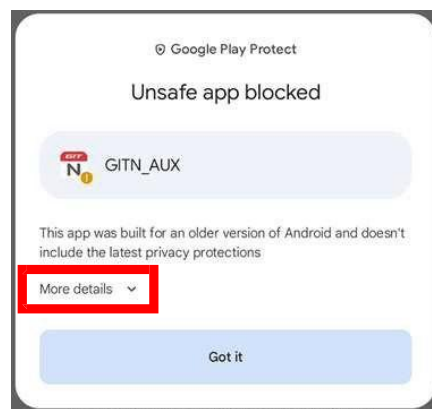
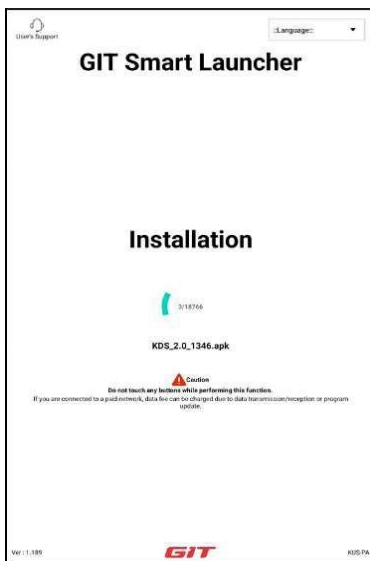
No **Yes**

12. (This step only applies to users who currently have KDS 1.0 installed.)

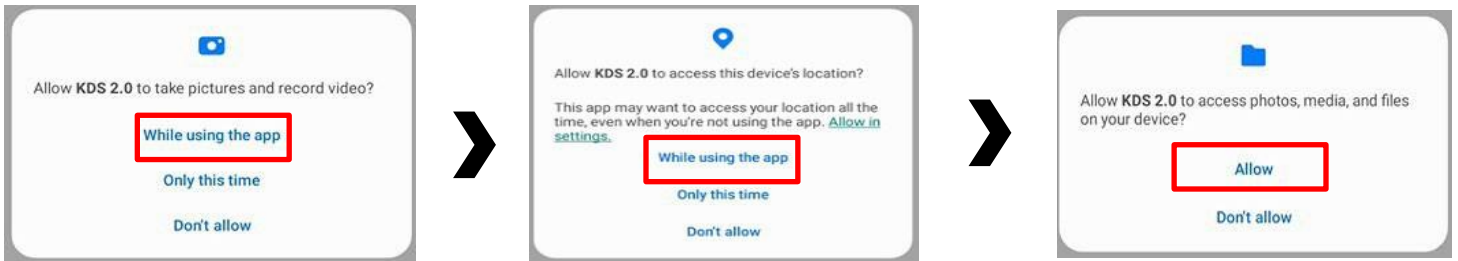
After Selecting “Yes”, KDS 1.0 programs will start deleting.



13. GIT Smart Launcher will begin installation, during the initial installation you will get five pop up notifications, select “More details” > “Install anyways” for all five occurrences of these types of messages.



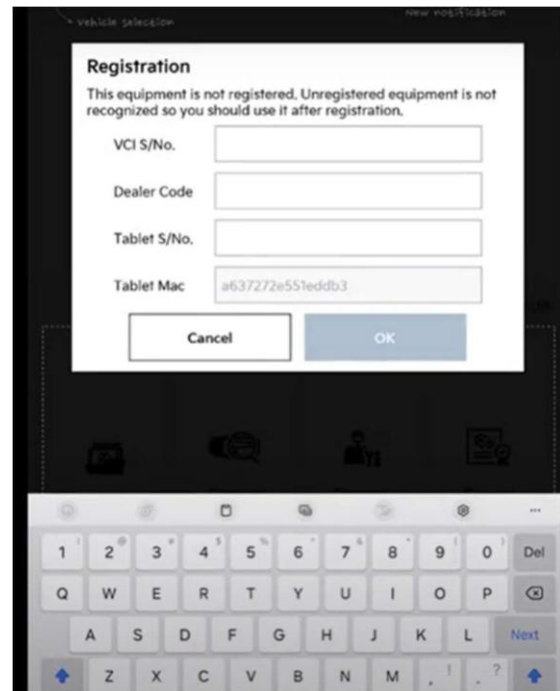
14. The KDS 2.0 and required applications will request permission to take pictures, record videos, access to device location, and access to photos, media files and notifications from KDS 2.0, Select **“While using the app”** and **“Allow”** to proceed.



15. After installation of KDS 2.0 has been completed, the registration window will appear, enter all the required fields, then select **“OK”**.

NOTE

Tablet Serial Number can be found under ‘Settings’ > ‘About Tablet’, press and hold the serial number to copy to clipboard, go back to Authentication screen, press and hold on tablet Serial to paste Serial number, refer to step 8.



Please contact GIT America at (888) 542 - 4371 for additional support.